



T2H2L rabbit pAb

Catalog No	BYab-10976
Isotype	IgG
Reactivity	Human;Rat;Mouse;
Applications	WB
Gene Name	GTF2H2C; GTF2H2D
Protein Name	T2H2L
Immunogen	Synthesized peptide derived from human T2H2L AA range: 275-325
Specificity	This antibody detects endogenous levels of T2H2L at Human
Formulation	Liquid in PBS containing 50% glycerol, 0.5% BSA and 0.02% sodium azide.
Source	Polyclonal, Rabbit,IgG
Purification	The antibody was affinity-purified from rabbit serum by affinity-chromatography using specific immunogen.
Dilution	WB 1: 500-2000
Concentration	1 mg/ml
Purity	≥90%
Storage Stability	-20°C/1 year
Synonyms	
Observed Band	
Cell Pathway	Nucleus .
Tissue Specificity	
Function	alternative products:A number of isoforms may be produced. The isoforms may be also produced by incomplete gene duplication,function:Component of the core-TFIIH basal transcription factor involved in nucleotide excision repair (NER) of DNA and, when complexed to CAK, in RNA transcription by RNA polymerase II.,function:Component of the core-TFIIH basal transcription factor involved in nucleotide excision repair (NER) of DNA and, when complexed to CAK, in RNA transcription by RNA polymerase II. The N-terminus interacts with and regulates XPD whereas an intact C-terminus is required for a successful escape of RNAP II form the promoter.,similarity:Belongs to the GTF2H2 family.,similarity:Contains 1 VWFA domain.,subunit:One of the six subunits forming the core-TFIIH basal transcription factor. Interacts with XPB, XPD, GTF2H1 and GTF2H3.,tissue specificity:Widely expressed, with higher express

Nanjing BYabs science technology Co.,Ltd



Background

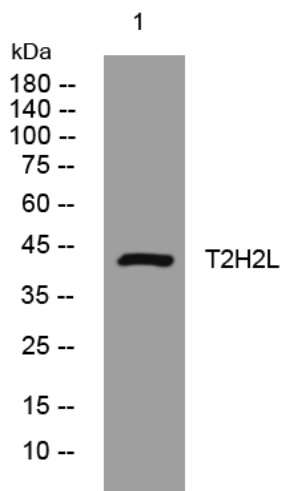
matters needing attention

Avoid repeated freezing and thawing!

Usage suggestions

This product can be used in immunological reaction related experiments. For more information, please consult technical personnel.

Products Images



Western blot analysis of lysates from Jarkat cells, primary antibody was diluted at 1:1000, 4° over night