



# SPNXA rabbit pAb

<b>Catalog No</b>	BYab-10978
<b>Isotype</b>	IgG
<b>Reactivity</b>	Human;Rat;Mouse;
<b>Applications</b>	IHC;IF
<b>Gene Name</b>	SPANXA1 SPANXA; SPANXA2
<b>Protein Name</b>	SPNXA
<b>Immunogen</b>	Synthesized peptide derived from human SPNXA AA range: 42-92
<b>Specificity</b>	This antibody detects endogenous levels of SPNXA at Human
<b>Formulation</b>	Liquid in PBS containing 50% glycerol, 0.5% BSA and 0.02% sodium azide.
<b>Source</b>	Polyclonal, Rabbit,IgG
<b>Purification</b>	The antibody was affinity-purified from rabbit serum by affinity-chromatography using specific immunogen.
<b>Dilution</b>	IHC-p 1: 50-200. IF 1:50-200
<b>Concentration</b>	1 mg/ml
<b>Purity</b>	≥90%
<b>Storage Stability</b>	-20°C/1 year
<b>Synonyms</b>	
<b>Observed Band</b>	
<b>Cell Pathway</b>	Cytoplasm . Nucleus . Associated with nuclear craters.
<b>Tissue Specificity</b>	Detected in testis and sperm.
<b>Function</b>	developmental stage:Detected in round and elongating spermatids.,similarity:Belongs to the SPAN-X family.,subcellular location:Associated with nuclear craters.,tissue specificity:Detected in testis and sperm.,
<b>Background</b>	Temporally regulated transcription and translation of several testis-specific genes is required to initiate the series of molecular and morphological changes in the male germ cell lineage necessary for the formation of mature spermatozoa. This gene is a member of the SPANX family of cancer/testis-associated genes, which are located in a cluster on chromosome X. The SPANX genes encode differentially expressed testis-specific proteins that localize to various subcellular compartments. This particular gene maps to chromosome X in a head-to-head

**Nanjing BYabscience technology Co.,Ltd**



orientation with SPANX family member A2, which appears to be a duplication of the A1 locus. The protein encoded by this gene targets to the nucleus where it associates with nuclear vacuoles and the redundant nuclear envelope. Based on its association with these poorly characterized regions of the sperm nucleus, this protein provides a biochemical marker to study unique structures in spermatazoa while attempting to further define its role in spermatogenesis. [provided by RefSeq, Jul 2008],

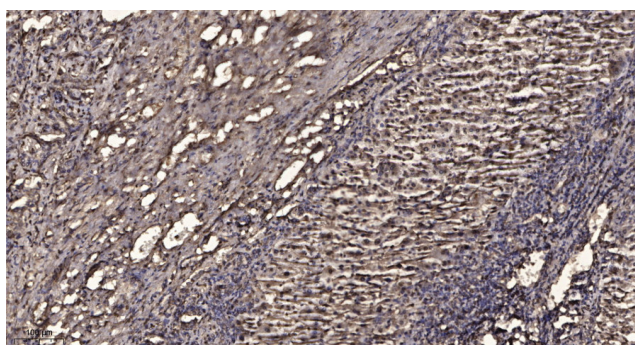
**matters needing attention**

Avoid repeated freezing and thawing!

**Usage suggestions**

This product can be used in immunological reaction related experiments. For more information, please consult technical personnel.

## Products Images



Immunohistochemical analysis of paraffin-embedded human liver cancer. 1, Antibody was diluted at 1:200(4° overnight). 2, Tris-EDTA,pH9.0 was used for antigen retrieval. 3,Secondary antibody was diluted at 1:200(room temperature, 45min).