



INT8 rabbit pAb

Catalog No	BYab-11002
Isotype	IgG
Reactivity	Human; Mouse
Applications	WB
Gene Name	INTS8 C8orf52
Protein Name	INT8
Immunogen	Synthesized peptide derived from human INT8 AA range: 346-396
Specificity	This antibody detects endogenous levels of INT8 at Human/Mouse
Formulation	Liquid in PBS containing 50% glycerol, 0.5% BSA and 0.02% sodium azide.
Source	Polyclonal, Rabbit,IgG
Purification	The antibody was affinity-purified from rabbit serum by affinity-chromatography using specific immunogen.
Dilution	WB 1: 500-2000
Concentration	1 mg/ml
Purity	≥90%
Storage Stability	-20°C/1 year
Synonyms	
Observed Band	
Cell Pathway	Nucleus .
Tissue Specificity	
Function	function:Component of the Integrator complex, a complex involved in the small nuclear RNAs (snRNA) U1 and U2 transcription and in their 3'-box-dependent processing. The Integrator complex is associated with the C-terminal domain (CTD) of RNA polymerase II largest subunit (POLR2A) and is recruited to the U1 and U2 snRNAs genes.,similarity:Contains 4 TPR repeats.,subunit:Belongs to the multiprotein complex Integrator, at least composed of INTS1, INTS2, INTS3, INTS4, INTS5, INTS6, INTS7, INTS8, INTS9/RC74, INTS10, CPSF3L/INTS11 and INTS12.,
Background	This gene encodes a subunit of the Integrator complex which is involved in the cleavage of small nuclear RNAs U1 and U2 within the nucleus. The encoded protein associates with RNA polymerase II and is recruited to the U1 and U2 small

Nanjing BYabscience technology Co.,Ltd



nuclear RNA genes. Alternative splicing results in multiple transcript variants.
[provided by RefSeq, Nov 2012],

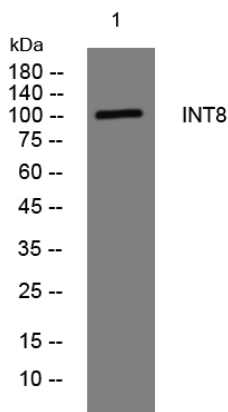
matters needing attention

Avoid repeated freezing and thawing!

Usage suggestions

This product can be used in immunological reaction related experiments. For more information, please consult technical personnel.

Products Images



Western blot analysis of lysates from HeLa cells,
primary antibody was diluted at 1:1000, 4° over night