



LCN12 rabbit pAb

| | |
|----------------------------------|-----------------------------------------------------------------------------------------------------------------------------------------------------------------------------------------------------------------------------------------------------------------------------------------------------------------------------------------------------|
| Catalog No | BYab-11019 |
| Isotype | IgG |
| Reactivity | Human; Mouse;Rat |
| Applications | WB;ELISA;IHC |
| Gene Name | LCN12 |
| Protein Name | LCN12 |
| Immunogen | Synthesized peptide derived from human LCN12 AA range: 56-106 |
| Specificity | This antibody detects endogenous levels of LCN12 at Human/Mouse/Rat |
| Formulation | Liquid in PBS containing 50% glycerol, 0.5% BSA and 0.02% sodium azide. |
| Source | Polyclonal, Rabbit,IgG |
| Purification | The antibody was affinity-purified from rabbit serum by affinity-chromatography using specific immunogen. |
| Dilution | WB 1:500-2000;IHC-p 1:50-300; ELISA 2000-20000 |
| Concentration | 1 mg/ml |
| Purity | ≥90% |
| Storage Stability | -20°C/1 year |
| Synonyms | |
| Observed Band | |
| Cell Pathway | Secreted . |
| Tissue Specificity | |
| Function | function:May play a role in male fertility. May act as a retinoid carrier protein within the epididymis.,similarity:Belongs to the calycin superfamily. Lipocalin family., |
| Background | Members of the lipocalin family, such as LCN12, have a common structure consisting of an 8-stranded antiparallel beta-barrel that forms a cup-shaped ligand-binding pocket or calyx. Lipocalins generally bind small hydrophobic ligands and transport them to specific cells (Suzuki et al., 2004 [PubMed 15363845]).[supplied by OMIM, Aug 2009], |
| matters needing attention | Avoid repeated freezing and thawing! |

Nanjing BYabscience technology Co.,Ltd

网址: www.njbybio.com

官方热线: 025-5229-8998

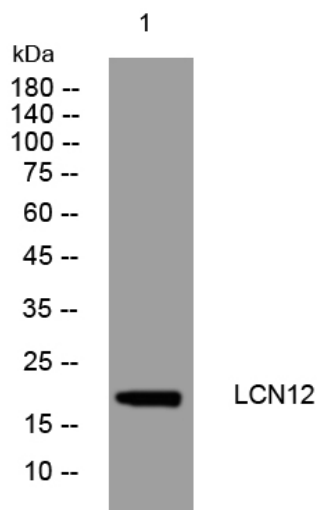
监督电话: 15950492658



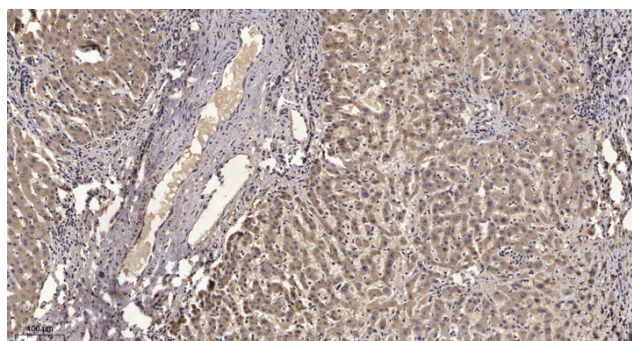
Usage suggestions

This product can be used in immunological reaction related experiments. For more information, please consult technical personnel.

Products Images



Western blot analysis of lysates from MCF-7 cells, primary antibody was diluted at 1:1000, 4° over night



Immunohistochemical analysis of paraffin-embedded human liver cancer. 1, Antibody was diluted at 1:200(4° overnight). 2, Tris-EDTA, pH9.0 was used for antigen retrieval. 3, Secondary antibody was diluted at 1:200(room temperature, 45min).