



KCD15 rabbit pAb

Catalog No	BYab-11051
Isotype	IgG
Reactivity	Human; Mouse
Applications	WB;IHC
Gene Name	KCTD15
Protein Name	KCD15
Immunogen	Synthesized peptide derived from human KCD15 AA range: 201-251
Specificity	This antibody detects endogenous levels of KCD15 at Human/Mouse
Formulation	Liquid in PBS containing 50% glycerol, 0.5% BSA and 0.02% sodium azide.
Source	Polyclonal, Rabbit,IgG
Purification	The antibody was affinity-purified from rabbit serum by affinity-chromatography using specific immunogen.
Dilution	WB 1:500-2000;IHC-p 1:50-300
Concentration	1 mg/ml
Purity	≥90%
Storage Stability	-20°C/1 year
Synonyms	
Observed Band	
Cell Pathway	Nucleus . In the brain, localizes to the arcuate hypothalamic nucleus, the ventromedial hypothalamic nucleus and the accumbens nucleus of the ventral striatum. .
Tissue Specificity	
Function	similarity:Contains 1 BTB (POZ) domain.,
Background	
matters needing attention	Avoid repeated freezing and thawing!

Nanjing BYabscience technology Co.,Ltd

网址: www.njbybio.com

官方热线: 025-5229-8998

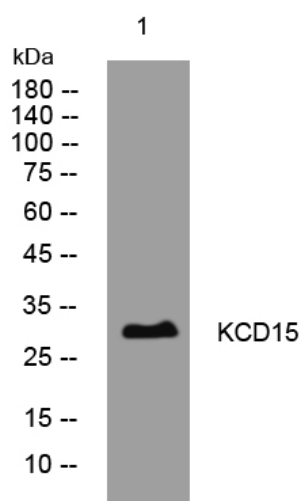
监督电话: 15950492658



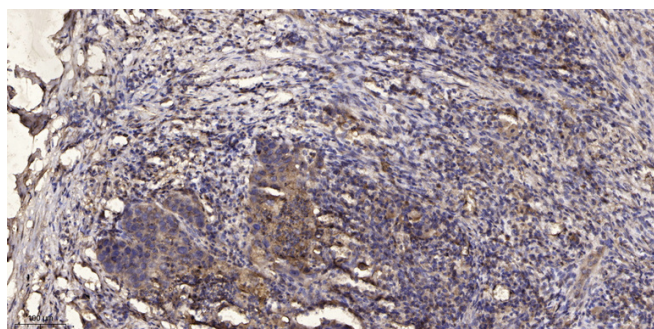
Usage suggestions

This product can be used in immunological reaction related experiments. For more information, please consult technical personnel.

Products Images



Western blot analysis of lysates from U2OS cells, primary antibody was diluted at 1:1000, 4° over night



Immunohistochemical analysis of paraffin-embedded human Squamous cell carcinoma of lung. 1, Antibody was diluted at 1:200(4° overnight). 2, Tris-EDTA, pH9.0 was used for antigen retrieval. 3, Secondary antibody was diluted at 1:200(room temperature, 45min).