



ZN142 rabbit pAb

Catalog No	BYab-11109
Isotype	IgG
Reactivity	Human;Rat;Mouse;
Applications	WB
Gene Name	ZNF142 KIAA0236
Protein Name	ZN142
Immunogen	Synthesized peptide derived from human ZN142 AA range: 616-666
Specificity	This antibody detects endogenous levels of ZN142 at Human
Formulation	Liquid in PBS containing 50% glycerol, 0.5% BSA and 0.02% sodium azide.
Source	Polyclonal, Rabbit,IgG
Purification	The antibody was affinity-purified from rabbit serum by affinity-chromatography using specific immunogen.
Dilution	WB 1: 500-2000
Concentration	1 mg/ml
Purity	≥90%
Storage Stability	-20°C/1 year
Synonyms	
Observed Band	
Cell Pathway	Nucleus .
Tissue Specificity	
Function	function:May be involved in transcriptional regulation.,similarity:Belongs to the krueppel C2H2-type zinc-finger protein family.,similarity:Contains 31 C2H2-type zinc fingers.,
Background	The protein encoded by this gene belongs to the Kruppel family of C2H2-type zinc finger proteins. It contains 31 C2H2-type zinc fingers and may be involved in transcriptional regulation. Alternatively spliced transcript variants have been found for this gene. [provided by RefSeq, Jan 2013],
matters needing attention	Avoid repeated freezing and thawing!

Nanjing BYabscience technology Co.,Ltd

网址: www.njbybio.com

官方热线: 025-5229-8998

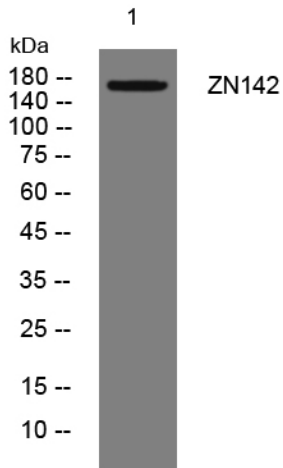
监督电话: 15950492658



Usage suggestions

This product can be used in immunological reaction related experiments. For more information, please consult technical personnel.

Products Images



Western blot analysis of lysates from KB cells, primary antibody was diluted at 1:1000, 4° over night