



# CNDH2 rabbit pAb

<b>Catalog No</b>	BYab-11152
<b>Isotype</b>	IgG
<b>Reactivity</b>	Human; Mouse; Rat
<b>Applications</b>	WB
<b>Gene Name</b>	NCAPH2 CAPH2
<b>Protein Name</b>	CNDH2
<b>Immunogen</b>	Synthesized peptide derived from human CNDH2 AA range: 501-551
<b>Specificity</b>	This antibody detects endogenous levels of CNDH2 at Human/Mouse/Rat
<b>Formulation</b>	Liquid in PBS containing 50% glycerol, 0.5% BSA and 0.02% sodium azide.
<b>Source</b>	Polyclonal, Rabbit, IgG
<b>Purification</b>	The antibody was affinity-purified from rabbit serum by affinity-chromatography using specific immunogen.
<b>Dilution</b>	WB 1: 500-2000
<b>Concentration</b>	1 mg/ml
<b>Purity</b>	≥90%
<b>Storage Stability</b>	-20°C/1 year
<b>Synonyms</b>	
<b>Observed Band</b>	
<b>Cell Pathway</b>	Nucleus . Chromosome . Distributed along the arms of chromosomes assembled in vivo and in vitro.
<b>Tissue Specificity</b>	
<b>Function</b>	function:Regulatory subunit of the condensin-2 complex, a complex that seems to provide chromosomes with an additional level of organization and rigidity and in establishing mitotic chromosome architecture. May play a role in lineage-specific role in T-cell development.,PTM:Phosphorylated upon DNA damage, probably by ATM or ATR.,similarity:Belongs to the CND2 H2 (condensin-2 subunit 2) family.,subcellular location:Distributed along the arms of chromosomes assembled in vivo and in vitro.,subunit:Component of the condensin-2 complex, which contains the smc2 and smc4 heterodimer, and three non SMC subunits, ncpg2, ncaph2 and ncaph3 that probably regulate the complex.,
<b>Background</b>	This gene encodes one of the non-SMC subunits of the condensin II complex. This complex plays an essential role in mitotic chromosome assembly. Alternate

**Nanjing BYabs science technology Co.,Ltd**



splicing of this gene results in multiple transcript variants.[provided by RefSeq, May 2010],

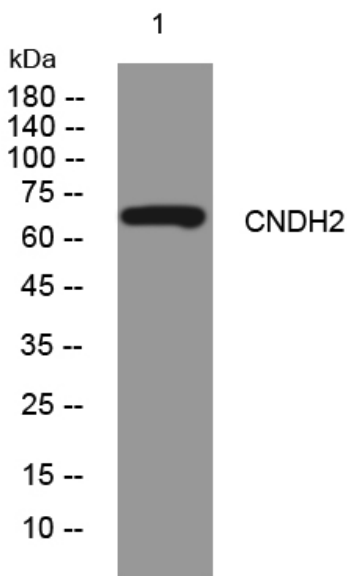
**matters needing attention**

Avoid repeated freezing and thawing!

**Usage suggestions**

This product can be used in immunological reaction related experiments. For more information, please consult technical personnel.

## Products Images



Western blot analysis of lysates from HeLa cells, primary antibody was diluted at 1:1000, 4° over night