



CAR16 rabbit pAb

Catalog No	BYab-11168
Isotype	IgG
Reactivity	Human;Rat;Mouse;
Applications	WB
Gene Name	CARD16 COP COP1
Protein Name	CAR16
Immunogen	Synthesized peptide derived from human CAR16 AA range: 101-151
Specificity	This antibody detects endogenous levels of CAR16 at Human
Formulation	Liquid in PBS containing 50% glycerol, 0.5% BSA and 0.02% sodium azide.
Source	Polyclonal, Rabbit,IgG
Purification	The antibody was affinity-purified from rabbit serum by affinity-chromatography using specific immunogen.
Dilution	WB 1: 500-2000
Concentration	1 mg/ml
Purity	≥90%
Storage Stability	-20°C/1 year
Synonyms	
Observed Band	
Cell Pathway	
Tissue Specificity	Widely expressed. Expressed at higher level in placenta, spleen, lymph node and bone marrow. Weakly or not expressed in thymus.
Function	function:Caspase inhibitor. Acts as a regulator of procaspase-1/CASP1 activation implicated in the regulation of the proteolytic maturation of pro-interleukin-1 beta (IL1B) and its release during inflammation. Inhibits the release of IL1B in response to LPS in monocytes. Also induces NF-kappa-B activation during the pro-inflammatory cytokine response. Also able to inhibit CASP1-mediated neuronal cell death, TNF-alpha, hypoxia-, UV-, and staurosporine-mediated cell death but not ER stress-mediated cell death. Acts by preventing activation of caspases CASP1 and CASP4, possibly by preventing the interaction between CASP1 and RIPK2.,induction:Down-regulated in patients suffering of Huntington disease.,similarity:Contains 1 CARD domain.,subunit:Homooligomer. Interacts with CASP1, CASP4, CARD8 and RIPK2.,tissue specificity:Widely expressed. Expressed at higher level in placenta, spleen, lymph

Nanjing BYabscience technology Co.,Ltd



Background

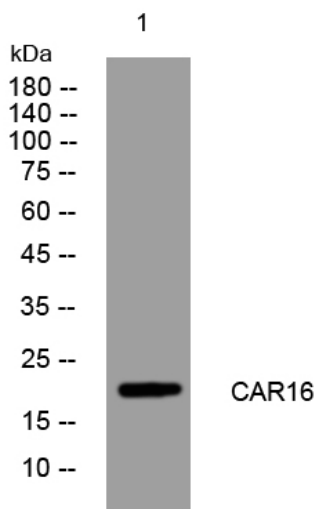
matters needing attention

Avoid repeated freezing and thawing!

Usage suggestions

This product can be used in immunological reaction related experiments. For more information, please consult technical personnel.

Products Images



Western blot analysis of lysates from HeLa cells, primary antibody was diluted at 1:1000, 4° over night