



Angptl1 Polyclonal Antibody

Catalog No	BYab-16025
Isotype	IgG
Reactivity	Human;Mouse;Rat
Applications	WB;IHC;IF;ELISA
Gene Name	ANGPTL1
Protein Name	Angiopoietin-related protein 1
Immunogen	The antiserum was produced against synthesized peptide derived from the Internal region of human ANGPTL1. AA range:11-60
Specificity	Angptl1 Polyclonal Antibody detects endogenous levels of Angptl1 protein.
Formulation	Liquid in PBS containing 50% glycerol, 0.5% BSA and 0.02% sodium azide.
Source	Polyclonal, Rabbit,IgG
Purification	The antibody was affinity-purified from rabbit antiserum by affinity-chromatography using epitope-specific immunogen.
Dilution	WB: 1/500 - 1/2000. IHC-p: 1/100-1/300. ELISA: 1/20000.. IF 1:50-200
Concentration	1 mg/ml
Purity	≥90%
Storage Stability	-20°C/1 year
Synonyms	ANGPTL1; ANG3; ANGPT3; ARP1; PSEC0154; Angiopoietin-related protein 1; Angiopoietin-3; ANG-3; Angiopoietin-like protein 1
Observed Band	57kD
Cell Pathway	Secreted .
Tissue Specificity	Highly expressed in adrenal gland, placenta, thyroid gland, heart, skeletal muscle and small intestine. Weakly expressed in testis, ovary, colon, pancreas, kidney and stomach.
Function	similarity:Contains 1 fibrinogen C-terminal domain.,tissue specificity:Highly expressed in adrenal gland, placenta, thyroid gland, heart, skeletal muscle and small intestine. Weakly expressed in testis, ovary, colon, pancreas, kidney and stomach.,
Background	Angiopoietins are members of the vascular endothelial growth factor family and the only known growth factors largely specific for vascular endothelium. Angiopoietin-1, angiopoietin-2, and angiopoietin-4 participate in the formation of blood vessels. The protein encoded by this gene is another member of the

Nanjing BYabscience technology Co.,Ltd



angiopoietin family that is widely expressed in adult tissues with mRNA levels highest in highly vascularized tissues. This protein was found to be a secretory protein that does not act as an endothelial cell mitogen in vitro. [provided by RefSeq, Jul 2008],

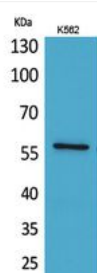
matters needing attention

Avoid repeated freezing and thawing!

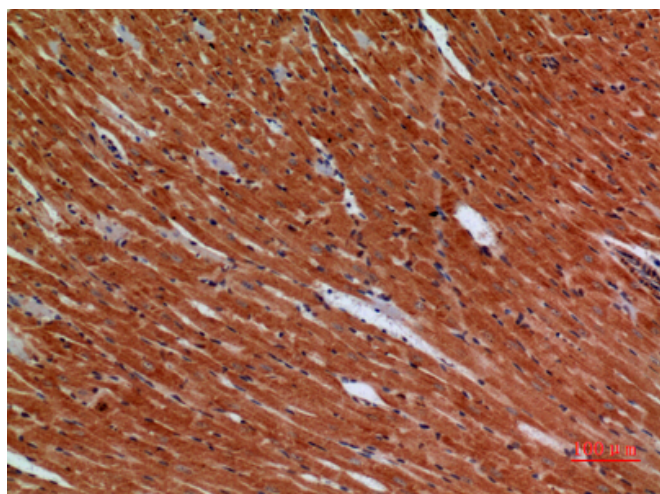
Usage suggestions

This product can be used in immunological reaction related experiments. For more information, please consult technical personnel.

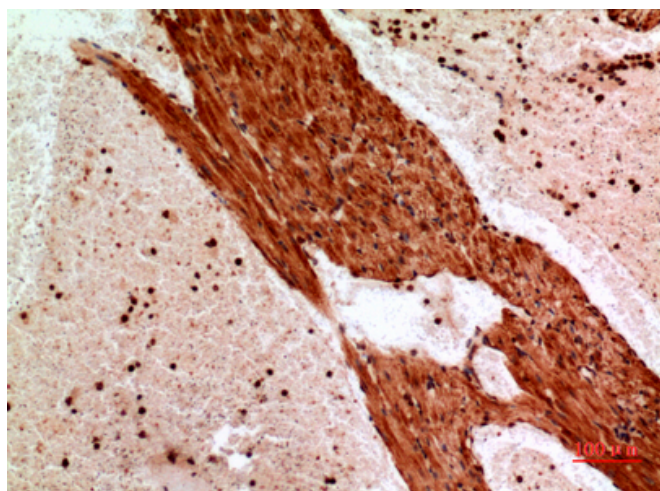
Products Images



Western Blot analysis of K562 cells using Angptl1 Polyclonal Antibody. Secondary antibody(catalog#:RS0002) was diluted at 1:20000

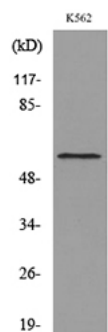


Immunohistochemical analysis of paraffin-embedded mouse-heart, antibody was diluted at 1:100



Immunohistochemical analysis of paraffin-embedded mouse-heart, antibody was diluted at 1:100

Nanjing BYabscience technology Co.,Ltd



Western blot analysis of lysate from K562 cells, using
ANGPTL1 Antibody.