



IL-26 Polyclonal Antibody

Catalog No	BYab-16076
Isotype	IgG
Reactivity	Human;Rat;Mouse;
Applications	WB;ELISA
Gene Name	IL26
Protein Name	Interleukin-26
Immunogen	Synthesized peptide derived from Interleukin-26 at AA range: 21-70
Specificity	IL-26 Polyclonal Antibody detects endogenous levels of IL-26 protein.
Formulation	Liquid in PBS containing 50% glycerol, 0.5% BSA and 0.02% sodium azide.
Source	Polyclonal, Rabbit,IgG
Purification	The antibody was affinity-purified from rabbit antiserum by affinity-chromatography using epitope-specific immunogen.
Dilution	Western Blot: 1/500 - 1/2000. ELISA: 1/10000. Not yet tested in other applications.
Concentration	1 mg/ml
Purity	≥90%
Storage Stability	-20°C/1 year
Synonyms	IL26; AK155; Interleukin-26; IL-26; Protein AK155
Observed Band	25kD
Cell Pathway	Secreted .
Tissue Specificity	Expressed in HVS transformed T-cells but not other T-cell lines or primary stimulated T-cells. Expressed in colonic T-cells including Th17 inflammatory T-cells; the expression is significantly increased in serum of patients with Crohn's disease (at protein level).
Function	induction:By Herpesvirus saimiri infection.,online information:Interleukin-26 entry,similarity:Belongs to the IL-10 family.,subunit:Homodimer.,tissue specificity:Expressed in HVS transformed T-cells but not other T-cell lines or primary stimulated T-cells.,
Background	This gene was identified by its overexpression specifically in herpesvirus samimiri-transformed T cells. The encoded protein is a member of the IL10 family of cytokines. It is a secreted protein and may function as a homodimer. This protein is thought to contribute to the transformed phenotype of T cells after infection by herpesvirus samimiri. [provided by RefSeq, Jul 2008],

Nanjing BYabscience technology Co.,Ltd



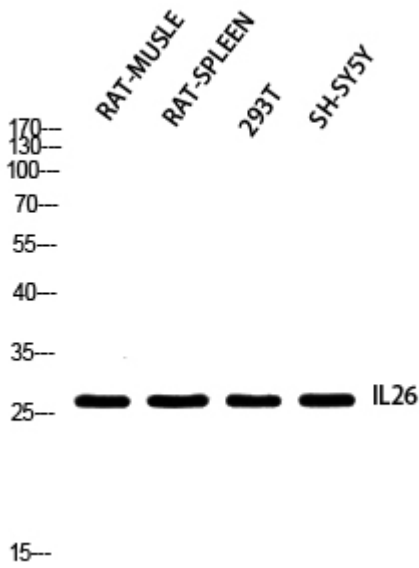
matters needing attention

Avoid repeated freezing and thawing!

Usage suggestions

This product can be used in immunological reaction related experiments. For more information, please consult technical personnel.

Products Images



Western blot analysis of RAT-MUSCLE RAT-SPLEEN 293T SH-SY5Y using IL26 antibody. Antibody was diluted at 1:2000. Secondary antibody(catalog#:RS0002) was diluted at 1:20000