



ARHGAP23 Polyclonal Antibody

Catalog No	BYab-16136
Isotype	IgG
Reactivity	Human;Rat;Mouse;
Applications	IHC;IF;WB;ELISA
Gene Name	ARHGAP23
Protein Name	Rho GTPase-activating protein 23
Immunogen	Synthesized peptide derived from ARHGAP23 . at AA range: 470-550
Specificity	ARHGAP23 Polyclonal Antibody detects endogenous levels of ARHGAP23 protein.
Formulation	Liquid in PBS containing 50% glycerol, 0.5% BSA and 0.02% sodium azide.
Source	Polyclonal, Rabbit,IgG
Purification	The antibody was affinity-purified from rabbit antiserum by affinity-chromatography using epitope-specific immunogen.
Dilution	WB 1:500-2000 IHC: 1/100 - 1/300. ELISA: 1/40000.. IF 1:50-200
Concentration	1 mg/ml
Purity	≥90%
Storage Stability	-20°C/1 year
Synonyms	ARHGAP23; KIAA1501; Rho GTPase-activating protein 23; Rho-type GTPase-activating protein 23
Observed Band	
Cell Pathway	cytosol,extracellular exosome,
Tissue Specificity	Expressed in placenta, prostate, hippocampus and brain medulla. Also expressed in brain tumor, salivary gland tumor, head and neck tumor.
Function	function:GTPase activator for the Rho-type GTPases by converting them to an inactive GDP-bound state.,similarity:Contains 1 PDZ (DHR) domain.,similarity:Contains 1 PH domain.,similarity:Contains 1 Rho-GAP domain.,tissue specificity:Expressed in placenta, prostate, hippocampus and brain medulla. Also expressed in brain tumor, salivary gland tumor, head and neck tumor.,
Background	The RHO (see ARHA; MIM 165390) family of small GTPases are involved in signal transduction through transmembrane receptors, and they are inactive in the GDP-bound form and active in the GTP-bound form. GTPase-activating proteins, such as ARHGAP23, inactivate RHO family proteins by stimulating their

Nanjing BYabscience technology Co.,Ltd



hydrolysis of GTP (Kato and Kato, 2004 [PubMed 15254754]).[supplied by OMIM, Mar 2008],

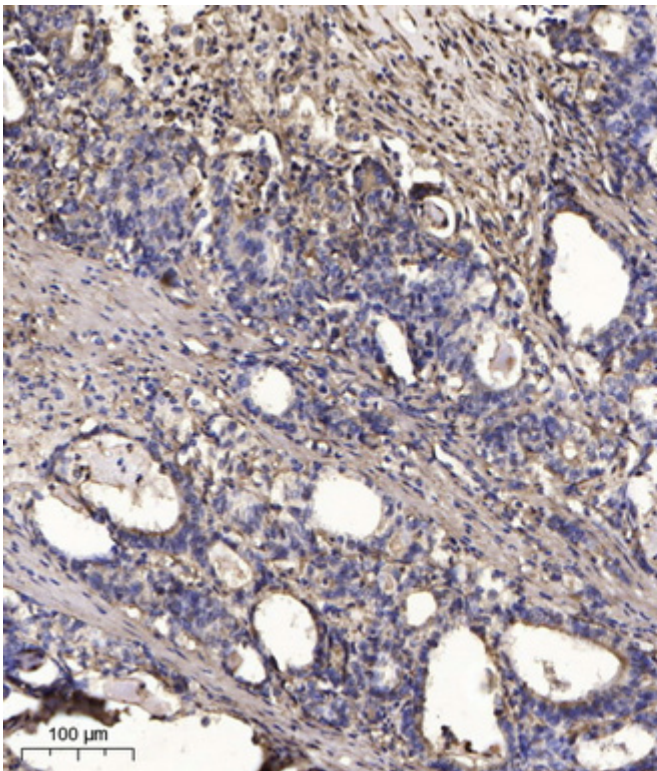
matters needing attention

Avoid repeated freezing and thawing!

Usage suggestions

This product can be used in immunological reaction related experiments. For more information, please consult technical personnel.

Products Images



Immunohistochemical analysis of paraffin-embedded human Gastric adenocarcinoma. 1, Antibody was diluted at 1:200(4° overnight). 2, Tris-EDTA,pH9.0 was used for antigen retrieval. 3,Secondary antibody was diluted at 1:200(room temperature, 45min).

Nanjing BYabscience technology Co.,Ltd

网址: www.njbybio.com

官方热线: 025-5229-8998

监督电话: 15950492658