



# CLLD7 Polyclonal Antibody

<b>Catalog No</b>	BYab-16149
<b>Isotype</b>	IgG
<b>Reactivity</b>	Human;Mouse
<b>Applications</b>	WB;IHC;IF;ELISA
<b>Gene Name</b>	RCBTB1
<b>Protein Name</b>	RCC1 and BTB domain-containing protein 1
<b>Immunogen</b>	The antiserum was produced against synthesized peptide derived from human RCBTB1. AA range:251-300
<b>Specificity</b>	CLLD7 Polyclonal Antibody detects endogenous levels of CLLD7 protein.
<b>Formulation</b>	Liquid in PBS containing 50% glycerol, 0.5% BSA and 0.02% sodium azide.
<b>Source</b>	Polyclonal, Rabbit,IgG
<b>Purification</b>	The antibody was affinity-purified from rabbit antiserum by affinity-chromatography using epitope-specific immunogen.
<b>Dilution</b>	WB: 1/500 - 1/2000. IHC: 1/100 - 1/300. ELISA: 1/20000.. IF 1:50-200
<b>Concentration</b>	1 mg/ml
<b>Purity</b>	≥90%
<b>Storage Stability</b>	-20°C/1 year
<b>Synonyms</b>	RCBTB1; CLLD7; E4.5; RCC1 and BTB domain-containing protein 1; Chronic lymphocytic leukemia deletion region gene 7 protein; CLL deletion region gene 7 protein; Regulator of chromosome condensation and BTB domain-containing protein 1
<b>Observed Band</b>	58kD
<b>Cell Pathway</b>	Nucleus .
<b>Tissue Specificity</b>	Ubiquitously expressed (PubMed:11306461, PubMed:27486781). In the retina, present in the nerve fiber layer and to a lesser extent in the inner and outer plexiform layers (at protein level) (PubMed:27486781).
<b>Function</b>	function:May be involved in cell cycle regulation by chromatin remodeling.,similarity:Contains 1 BTB (POZ) domain.,similarity:Contains 2 BTB (POZ) domains.,similarity:Contains 6 RCC1 repeats.,tissue specificity:Ubiquitously expressed.,

**Nanjing BYabscience technology Co.,Ltd**

网址: [www.njbybio.com](http://www.njbybio.com)

官方热线: 025-5229-8998

监督电话: 15950492658

**Background**

This gene encodes a protein with an N-terminal RCC1 domain and a C-terminal BTB (broad complex, tramtrack and bric-a-brac) domain. In rat, over-expression of this gene in vascular smooth muscle cells induced cellular hypertrophy. In rat, the C-terminus of RCBTB1 interacts with the angiotensin II receptor-1A. In humans, this gene maps to a region of chromosome 13q that is frequently deleted in B-cell chronic lymphocytic leukemia and other lymphoid malignancies. [provided by RefSeq, Jul 2008],

**matters needing attention**

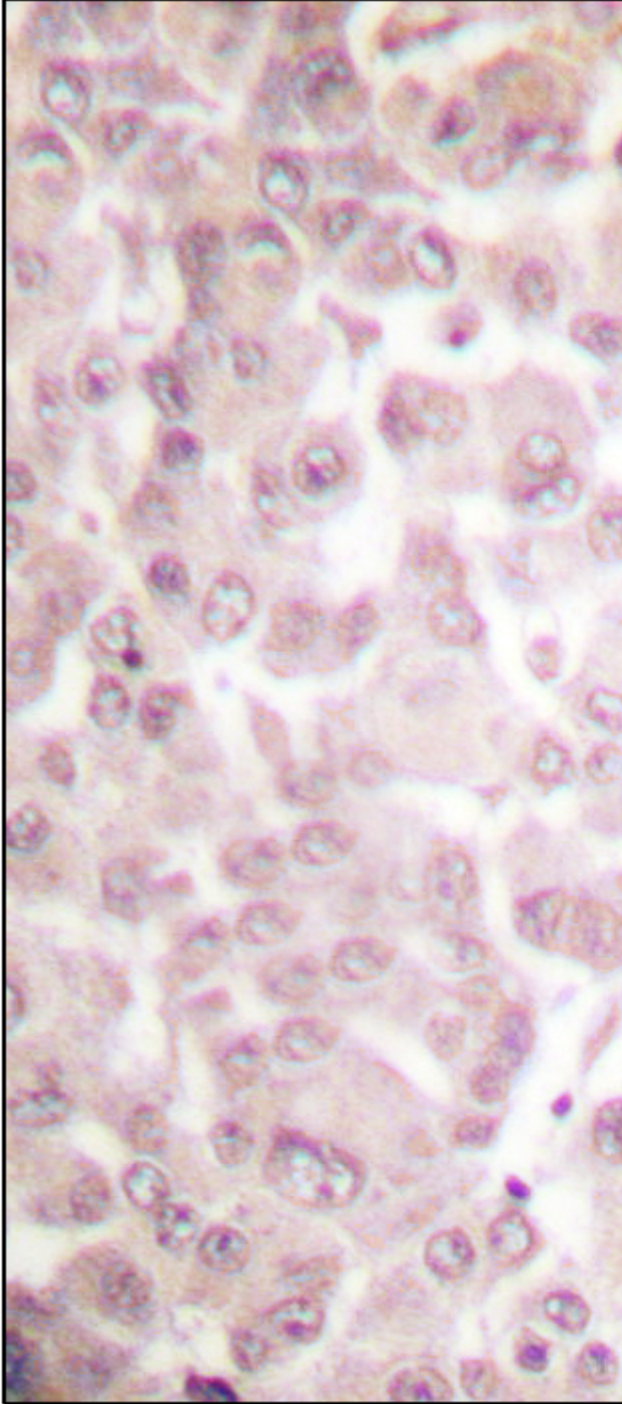
Avoid repeated freezing and thawing!

**Usage suggestions**

This product can be used in immunological reaction related experiments. For more information, please consult technical personnel.



## Products Images



Immunohistochemistry analysis of paraffin-embedded human breast carcinoma tissue, using RCBTB1 Antibody. The picture on the right is blocked with the synthesized peptide.

Nanjing BYabscience technology Co.,Ltd

网址: [www.njbybio.com](http://www.njbybio.com)

官方热线: 025-5229-8998

监督电话: 15950492658



Western blot analysis of lysates from LOVO cells, using RCBTB1 Antibody. The lane on the right is blocked with the synthesized peptide.

RCC1 --



Nanjing BYabscience technology Co.,Ltd

网址: [www.njbybio.com](http://www.njbybio.com)

官方热线: 025-5229-8998

监督电话: 15950492658