



# E-Ras Polyclonal Antibody

<b>Catalog No</b>	BYab-16156
<b>Isotype</b>	IgG
<b>Reactivity</b>	Human;Rat;Mouse;
<b>Applications</b>	WB;IF;ELISA
<b>Gene Name</b>	ERAS
<b>Protein Name</b>	GTPase Eras
<b>Immunogen</b>	The antiserum was produced against synthesized peptide derived from human ERAS. AA range:184-233
<b>Specificity</b>	E-Ras Polyclonal Antibody detects endogenous levels of E-Ras protein.
<b>Formulation</b>	Liquid in PBS containing 50% glycerol, 0.5% BSA and 0.02% sodium azide.
<b>Source</b>	Polyclonal, Rabbit,IgG
<b>Purification</b>	The antibody was affinity-purified from rabbit antiserum by affinity-chromatography using epitope-specific immunogen.
<b>Dilution</b>	Western Blot: 1/500 - 1/2000. Immunofluorescence: 1/200 - 1/1000. ELISA: 1/20000. Not yet tested in other applications.
<b>Concentration</b>	1 mg/ml
<b>Purity</b>	≥90%
<b>Storage Stability</b>	-20°C/1 year
<b>Synonyms</b>	ERAS; HRAS2; HRASP; GTPase ERas; E-Ras; Embryonic stem cell-expressed Ras
<b>Observed Band</b>	25kD
<b>Cell Pathway</b>	Cell membrane ; Lipid-anchor ; Cytoplasmic side .
<b>Tissue Specificity</b>	Brain,
<b>Function</b>	enzyme regulation:Alternate between an inactive form bound to GDP and an active form bound to GTP. Activated by a guanine nucleotide-exchange factor (GEF) and inactivated by a GTPase-activating protein (GAP).,function:Ras proteins bind GDP/GTP and possess intrinsic GTPase activity. Plays an important role in the tumor-like growth properties of embryonic stem cells.,similarity:Belongs to the small GTPase superfamily. Ras family.,subunit:Interacts with PIK3CD.,
<b>Background</b>	This gene encodes a constitutively active member of the small GTPase Ras protein family. The encoded protein activates the phosphatidylinositol 3-kinase signal transduction pathway in undifferentiated stem cells, but is not expressed in

**Nanjing BYabscience technology Co.,Ltd**



differentiated cells. This gene may be involved in cancer and chemotherapy resistance. [provided by RefSeq, Dec 2012],

**matters needing attention**

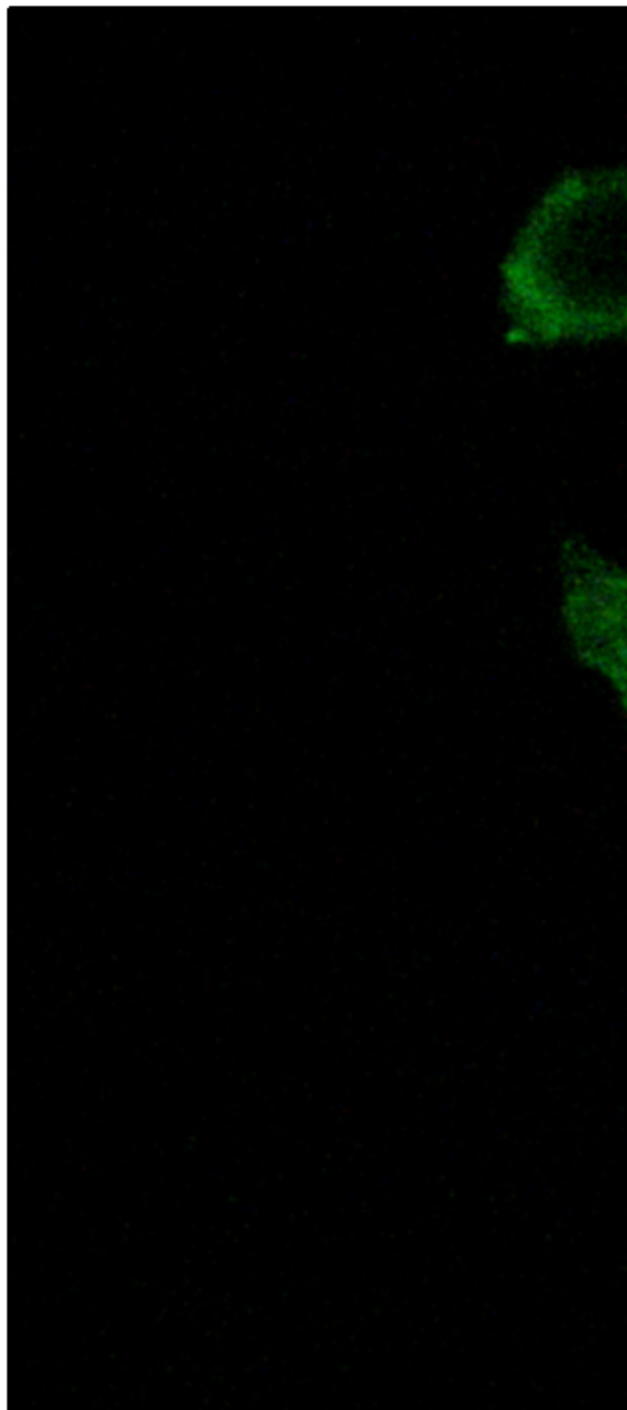
Avoid repeated freezing and thawing!

**Usage suggestions**

This product can be used in immunological reaction related experiments. For more information, please consult technical personnel.



## Products Images



Immunofluorescence analysis of A549 cells, using ERAS Antibody. The picture on the right is blocked with the synthesized peptide.

Nanjing BYabscience technology Co.,Ltd

网址: [www.njbybio.com](http://www.njbybio.com)

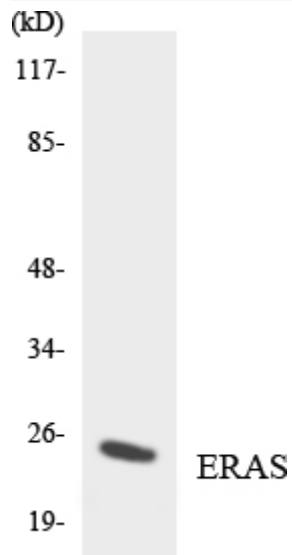
官方热线: 025-5229-8998

监督电话: 15950492658



Western blot analysis of lysates from Jurkat cells, using ERAS Antibody. The lane on the right is blocked with the synthesized peptide.

ERAS --



Western blot analysis of the lysates from HeLa cells using ERAS antibody.