



# G3BP2 Polyclonal Antibody

<b>Catalog No</b>	BYab-16158
<b>Isotype</b>	IgG
<b>Reactivity</b>	Human;Mouse
<b>Applications</b>	WB;ELISA
<b>Gene Name</b>	G3BP2
<b>Protein Name</b>	Ras GTPase-activating protein-binding protein 2
<b>Immunogen</b>	The antiserum was produced against synthesized peptide derived from human G3BP2. AA range:433-482
<b>Specificity</b>	G3BP2 Polyclonal Antibody detects endogenous levels of G3BP2 protein.
<b>Formulation</b>	Liquid in PBS containing 50% glycerol, 0.5% BSA and 0.02% sodium azide.
<b>Source</b>	Polyclonal, Rabbit,IgG
<b>Purification</b>	The antibody was affinity-purified from rabbit antiserum by affinity-chromatography using epitope-specific immunogen.
<b>Dilution</b>	Western Blot: 1/500 - 1/2000. ELISA: 1/10000. Not yet tested in other applications.
<b>Concentration</b>	1 mg/ml
<b>Purity</b>	≥90%
<b>Storage Stability</b>	-20°C/1 year
<b>Synonyms</b>	G3BP2; KIAA0660; Ras GTPase-activating protein-binding protein 2; G3BP-2; GAP SH3 domain-binding protein 2
<b>Observed Band</b>	55kD
<b>Cell Pathway</b>	Cytoplasm . Cytoplasm, Stress granule .
<b>Tissue Specificity</b>	B-cell,Brain,Colon carcinoma,Epithelium,Lung carcinoma,Ovarian carc
<b>Function</b>	function:Probable scaffold protein that may be involved in mRNA transport .,PTM:Arg-457 and Arg-468 are dimethylated, probably to asymmetric dimethylarginine.,similarity:Contains 1 NTF2 domain.,similarity:Contains 1 RRM (RNA recognition motif) domain.,subunit:Binds to the N-terminal domain of I-kappa-B-alpha.,
<b>Background</b>	function:Probable scaffold protein that may be involved in mRNA transport .,PTM:Arg-457 and Arg-468 are dimethylated, probably to asymmetric dimethylarginine.,similarity:Contains 1 NTF2 domain.,similarity:Contains 1 RRM (RNA recognition motif) domain.,subunit:Binds to the N-terminal domain of

**Nanjing BYabscience technology Co.,Ltd**



I-kappa-B-alpha.,

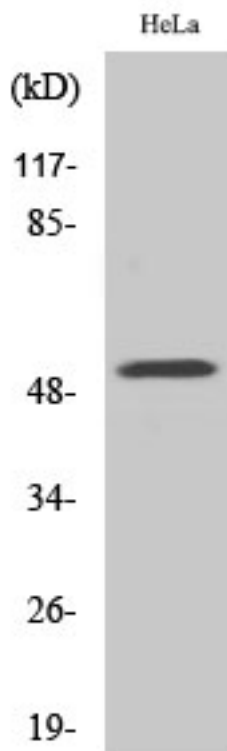
**matters needing attention**

Avoid repeated freezing and thawing!

**Usage suggestions**

This product can be used in immunological reaction related experiments. For more information, please consult technical personnel.

## Products Images



Western Blot analysis of various cells using G3BP2 Polyclonal Antibody

Nanjing BYabs science technology Co.,Ltd

网址: [www.njbybio.com](http://www.njbybio.com)

官方热线: 025-5229-8998

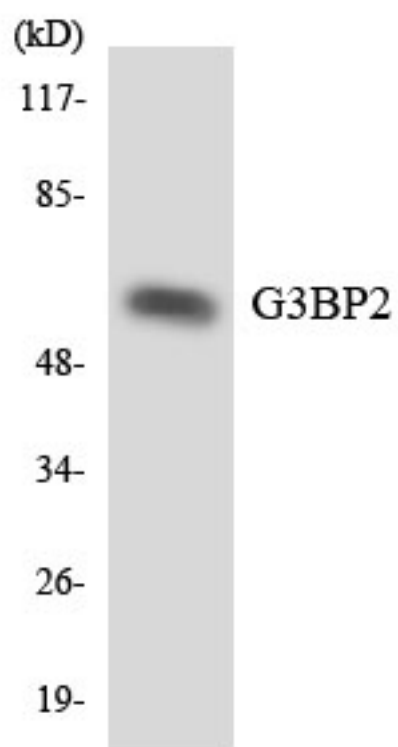
监督电话: 15950492658



A

Western blot analysis of lysates from HeLa, HUVEC, and A549 cells, using G3BP2 Antibody. The lane on the right is blocked with the synthesized peptide.

G3BP2--



Western blot analysis of the lysates from HeLa cells using G3BP2 antibody.