



GIMAP5 Polyclonal Antibody

Catalog No	BYab-16165
Isotype	IgG
Reactivity	Human;Rat;Mouse;
Applications	WB;IHC;IF;ELISA
Gene Name	GIMAP5
Protein Name	GTPase IMAP family member 5
Immunogen	The antiserum was produced against synthesized peptide derived from human GIMAP5. AA range:231-280
Specificity	GIMAP5 Polyclonal Antibody detects endogenous levels of GIMAP5 protein.
Formulation	Liquid in PBS containing 50% glycerol, 0.5% BSA and 0.02% sodium azide.
Source	Polyclonal, Rabbit,IgG
Purification	The antibody was affinity-purified from rabbit antiserum by affinity-chromatography using epitope-specific immunogen.
Dilution	WB: 1/500 - 1/2000. IHC: 1/100 - 1/300. ELISA: 1/20000.. IF 1:50-200
Concentration	1 mg/ml
Purity	≥90%
Storage Stability	-20°C/1 year
Synonyms	GIMAP5; IAN4L1; IAN5; IMAP3; GTPase IMAP family member 5; Immunity-associated nucleotide 4-like 1 protein; Immunity-associated nucleotide 5 protein; IAN-5; hIAN5; Immunity-associated protein 3
Observed Band	35kD
Cell Pathway	Lysosome membrane ; Single-pass type IV membrane protein . Endosome, multivesicular body membrane ; Single-pass type IV membrane protein . Endosome membrane ; Single-pass type IV membrane protein . The mitochondrial localization originally reported was observed with C-terminally tagged protein and was not confirmed in later publications. .
Tissue Specificity	Widely expressed with high levels in lymph node and spleen (PubMed:14724691). High expression found in T lymphocytes, including CD4 and CD8-positive T-cells, and monocytes (PubMed:14724691, PubMed:29382851). Very low expression levels in B-lymphocytes (PubMed:14724691).
Function	function:Required for mitochondrial integrity and T-cell survival. May contribute to T-cell quiescence.,similarity:Belongs to the IAN GTP-binding protein family.,tissue specificity:Widely expressed with high levels in lymph node and spleen. High

Nanjing BYabscience technology Co.,Ltd



expression found in CD4 and CD8-positive T-cells and monocytes with very low levels in B-lymphocytes. Highly expressed in B-lymphocyte-derived neoplasms.,

Background

This gene encodes a protein belonging to the GTP-binding superfamily and to the immuno-associated nucleotide (IAN) subfamily of nucleotide-binding proteins. In humans, the IAN subfamily genes are located in a cluster at 7q36.1. This gene encodes an antiapoptotic protein that functions in T-cell survival. Polymorphisms in this gene are associated with systemic lupus erythematosus. Read-through transcription exists between this gene and the neighboring upstream GIMAP1 (GTPase, IMAP family member 1) gene. [provided by RefSeq, Dec 2010],

matters needing attention

Avoid repeated freezing and thawing!

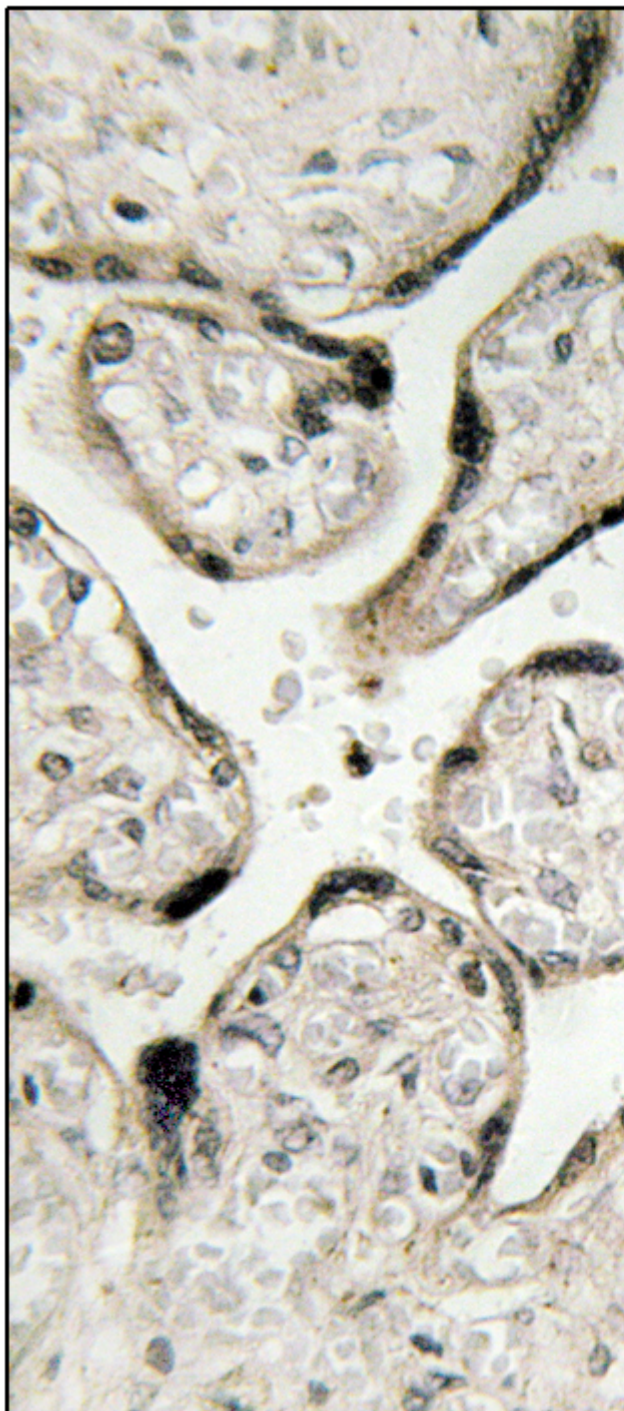
Usage suggestions

This product can be used in immunological reaction related experiments. For more information, please consult technical personnel.

Products Images



Western Blot analysis of various cells using GIMAP5 Polyclonal Antibody



Immunohistochemistry analysis of paraffin-embedded human placenta tissue, using GIMAP5 Antibody. The picture on the right is blocked with the synthesized peptide.



Western blot analysis of lysates from HeLa and HT-29 cells, using GIMAP5 Antibody. The lane on the right is blocked with the synthesized peptide.

GIMAP5-

nce technology Co.,Ltd

025-5229-8998

监督电话: 15950492658



Nanjing BYabscience technology Co.,Ltd

网址: www.njbybio.com

官方热线: 025-5229-8998

监督电话: 15950492658