



RAB3IP Polyclonal Antibody

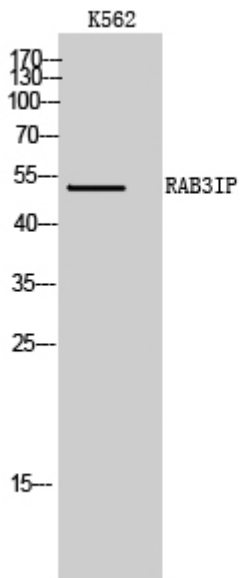
Catalog No	BYab-16214
Isotype	IgG
Reactivity	Human;Mouse;Rat
Applications	WB;IHC;IF;ELISA
Gene Name	RAB3IP
Protein Name	Rab-3A-interacting protein
Immunogen	The antiserum was produced against synthesized peptide derived from human RAB3IP. AA range:257-306
Specificity	RAB3IP Polyclonal Antibody detects endogenous levels of RAB3IP protein.
Formulation	Liquid in PBS containing 50% glycerol, 0.5% BSA and 0.02% sodium azide.
Source	Polyclonal, Rabbit,IgG
Purification	The antibody was affinity-purified from rabbit antiserum by affinity-chromatography using epitope-specific immunogen.
Dilution	WB: 1/500 - 1/2000. IHC: 1/100 - 1/300. ELISA: 1/40000.. IF 1:50-200
Concentration	1 mg/ml
Purity	≥90%
Storage Stability	-20°C/1 year
Synonyms	RAB3IP; RABIN8; Rab-3A-interacting protein; Rab3A-interacting protein; Rabin-3; SSX2-interacting protein
Observed Band	53kD
Cell Pathway	Cytoplasm . Nucleus . Cytoplasm, cytoskeleton . Cell projection, lamellipodium. Vesicle . Cytoplasm, cytoskeleton, microtubule organizing center, centrosome . Predominantly cytoplasmic but a small proportion colocalizes with SSX2 in the nucleus. Activation of protein kinase C results in redistribution to the periphery of lamellipodia. .
Tissue Specificity	Expressed in brain, kidney, heart, pancreas and placenta. Not detected in skeletal muscle or liver.
Function	similarity:Belongs to the SEC2 family.,subcellular location:Predominantly cytoplasmic but a small proportion colocalizes with SSX2 in the nucleus.,subunit:Interacts with the N-terminal region of SSX2. Interacts with RAB3A and RAB3D.,tissue specificity:Expressed in brain, kidney, heart, pancreas and placenta. Not detected in skeletal muscle or liver.,

Nanjing BYabscience technology Co.,Ltd

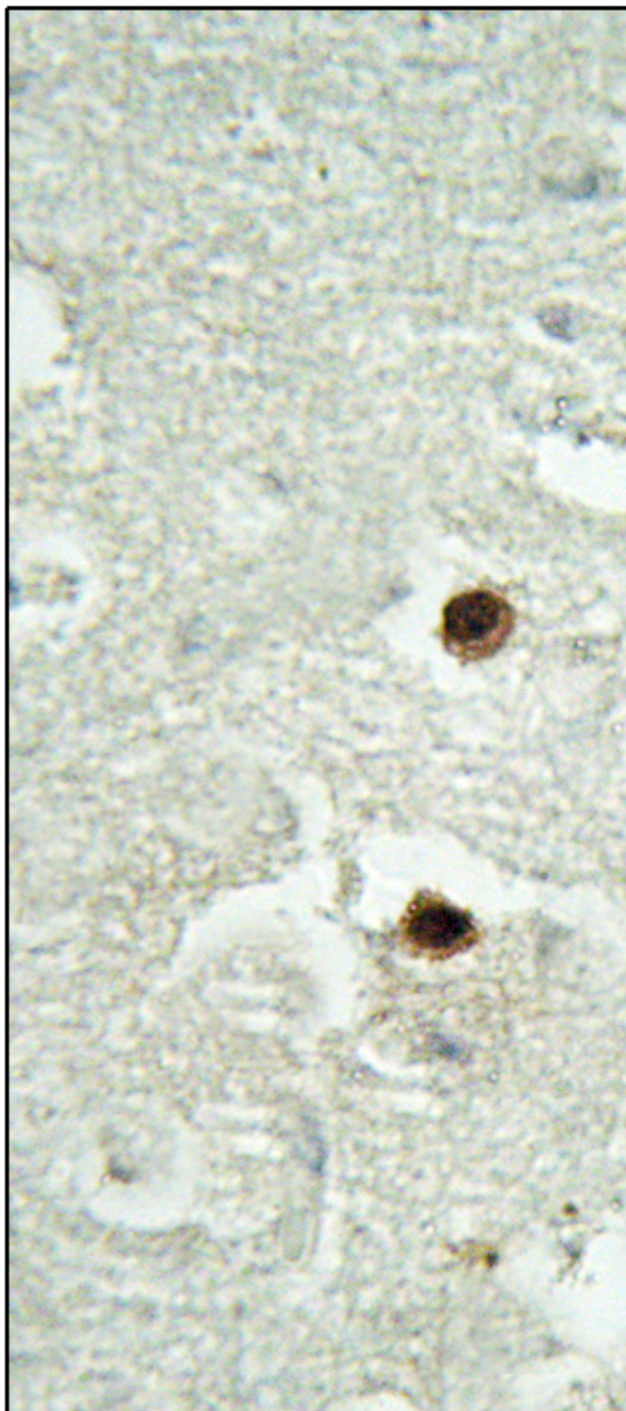


Background	similarity:Belongs to the SEC2 family.,subcellular location:Predominantly cytoplasmic but a small proportion colocalizes with SSX2 in the nucleus.,subunit:Interacts with the N-terminal region of SSX2. Interacts with RAB3A and RAB3D.,tissue specificity:Expressed in brain, kidney, heart, pancreas and placenta. Not detected in skeletal muscle or liver.,
matters needing attention	Avoid repeated freezing and thawing!
Usage suggestions	This product can be used in immunological reaction related experiments. For more information, please consult technical personnel.

Products Images



Western Blot analysis of K562 cells using RAB3IP Polyclonal Antibody



Immunohistochemistry analysis of paraffin-embedded human brain tissue, using RAB3IP Antibody. The picture on the right is blocked with the synthesized peptide.