



Rag B Polyclonal Antibody

Catalog No	BYab-16219
Isotype	IgG
Reactivity	Human;Mouse;Rat
Applications	IHC;IF;ELISA
Gene Name	RRAGB
Protein Name	Ras-related GTP-binding protein B
Immunogen	Synthesized peptide derived from Rag B . at AA range: 50-130
Specificity	Rag B Polyclonal Antibody detects endogenous levels of Rag B protein.
Formulation	Liquid in PBS containing 50% glycerol, 0.5% BSA and 0.02% sodium azide.
Source	Polyclonal, Rabbit,IgG
Purification	The antibody was affinity-purified from rabbit antiserum by affinity-chromatography using epitope-specific immunogen.
Dilution	IHC: 1/100 - 1/300. ELISA: 1/40000.. IF 1:50-200
Concentration	1 mg/ml
Purity	≥90%
Storage Stability	-20°C/1 year
Synonyms	RRAGB; Ras-related GTP-binding protein B; Rag B; RagB
Observed Band	
Cell Pathway	Cytoplasm . Lysosome .
Tissue Specificity	Adipose tissue,Brain,Skin,
Function	function:Involved in the RCC1/Ran-GTPase pathway. Has guanine nucleotide-binding activity but undetectable intrinsic GTPase activity.,similarity:Belongs to the GTR/RAG GTP-binding protein family.,subunit:The short isoform binds GTP (By similarity). Interacts with RRAGC and RRAGD.,
Background	Ras-homologous GTPases constitute a large family of signal transducers that alternate between an activated, GTP-binding state and an inactivated, GDP-binding state. These proteins represent cellular switches that are operated by GTP-exchange factors and factors that stimulate their intrinsic GTPase activity. All GTPases of the Ras superfamily have in common the presence of six conserved motifs involved in GTP/GDP binding, three of which are

Nanjing BYabscience technology Co.,Ltd



phosphate-/magnesium-binding sites (PM1-PM3) and three of which are guanine nucleotide-binding sites (G1-G3). Transcript variants encoding distinct isoforms have been identified. [provided by RefSeq, Jul 2008],

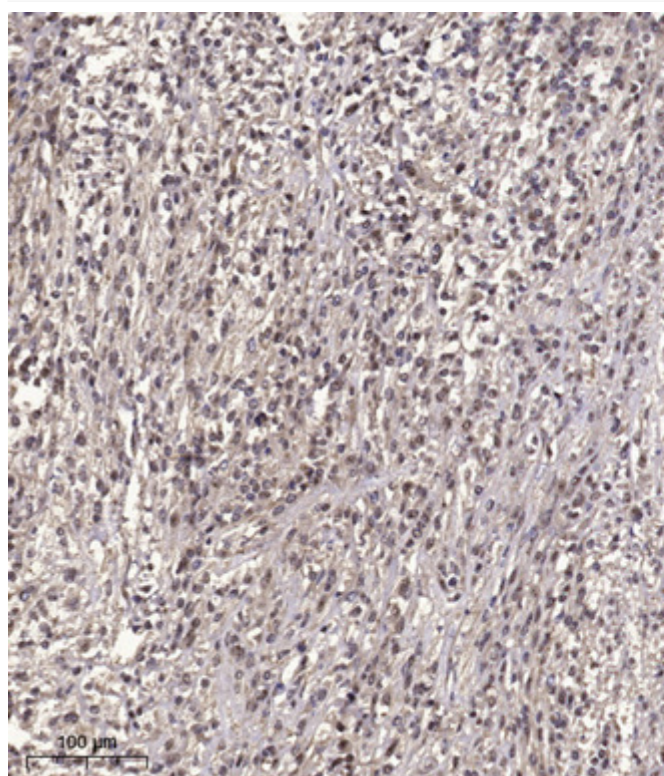
matters needing attention

Avoid repeated freezing and thawing!

Usage suggestions

This product can be used in immunological reaction related experiments. For more information, please consult technical personnel.

Products Images



Immunohistochemical analysis of paraffin-embedded human small intestinal carcinoma tissue. 1,primary Antibody was diluted at 1:200(4° overnight). 2, Sodium citrate pH 6.0 was used for antigen retrieval(>98° C,20min). 3,Secondary antibody was diluted at 1:200

Nanjing BYabs science technology Co.,Ltd

网址: www.njbybio.com

官方热线: 025-5229-8998

监督电话: 15950492658