



Rap 2C Polyclonal Antibody

Catalog No	BYab-16225
Isotype	IgG
Reactivity	Human;Mouse
Applications	WB;IHC
Gene Name	RAP2C
Protein Name	Ras-related protein Rap-2c
Immunogen	The antiserum was produced against synthesized peptide derived from human RAP2C. AA range:97-146
Specificity	Rap 2C Polyclonal Antibody detects endogenous levels of Rap 2C protein.
Formulation	Liquid in PBS containing 50% glycerol, 0.5% BSA and 0.02% sodium azide.
Source	Polyclonal, Rabbit,IgG
Purification	The antibody was affinity-purified from rabbit antiserum by affinity-chromatography using epitope-specific immunogen.
Dilution	WB 1:500-2000;IHC-p 1:50-300
Concentration	1 mg/ml
Purity	≥90%
Storage Stability	-20°C/1 year
Synonyms	RAP2C; Ras-related protein Rap-2c
Observed Band	26kD
Cell Pathway	Cytoplasm . Recycling endosome membrane ; Lipid-anchor ; Cytoplasmic side .
Tissue Specificity	Expressed in liver, skeletal muscle, prostate, uterus, rectum, stomach, and bladder and to a lower extent in brain, kidney, pancreas, and bone marrow. Expressed in mononuclear leukocytes and megakaryocytes.
Function	similarity:Belongs to the small GTPase superfamily. Ras family.,tissue specificity:Expressed in mononuclear leukocytes and megakaryocytes. Not detected in platelets.,
Background	The protein encoded by this gene is a member of the Ras-related protein subfamily of the Ras GTPase superfamily. Members of this family are small GTPases that act as molecular switches to regulate cellular proliferation, differentiation, and apoptosis. This protein has been reported to activate in vitro transcriptional activity of the serum response element. Alternative splicing results in multiple transcript variants. [provided by RefSeq, Sep 2012],

Nanjing BYabs science technology Co.,Ltd



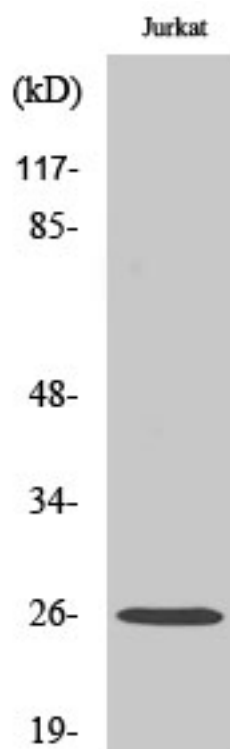
matters needing attention

Avoid repeated freezing and thawing!

Usage suggestions

This product can be used in immunological reaction related experiments. For more information, please consult technical personnel.

Products Images



Western Blot analysis of various cells using Rap 2C Polyclonal Antibody diluted at 1:500



M

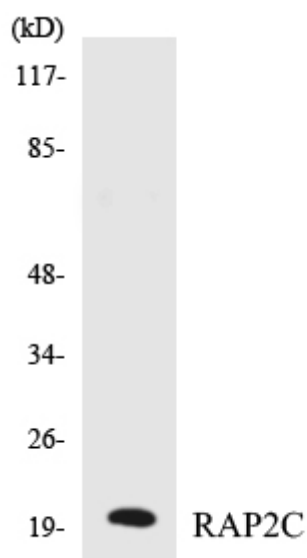
Western blot analysis of lysates from Jurkat and MCF-7 cells, using RAP2C Antibody. The lane on the right is blocked with the synthesized peptide.

RAP2C--

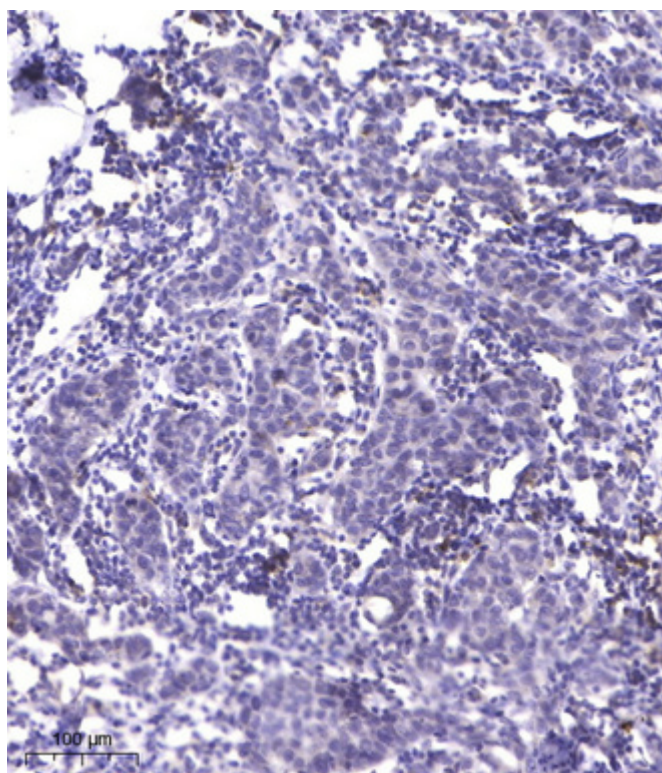
nce technology Co.,Ltd

025-5229-8998

监督电话：15950492658



Western blot analysis of the lysates from K562 cells using RAP2C antibody.



Immunohistochemical analysis of paraffin-embedded human Breast cancer. 1, Antibody was diluted at 1:200(4° overnight). 2, Tris-EDTA, pH9.0 was used for antigen retrieval. 3, Secondary antibody was diluted at 1:200(room temperature, 45min).