



# RERG Polyclonal Antibody

<b>Catalog No</b>	BYab-16235
<b>Isotype</b>	IgG
<b>Reactivity</b>	Human;Mouse
<b>Applications</b>	IHC;IF;ELISA
<b>Gene Name</b>	RERG
<b>Protein Name</b>	Ras-related and estrogen-regulated growth inhibitor
<b>Immunogen</b>	Synthesized peptide derived from RERG . at AA range: 70-150
<b>Specificity</b>	RERG Polyclonal Antibody detects endogenous levels of RERG protein.
<b>Formulation</b>	Liquid in PBS containing 50% glycerol, 0.5% BSA and 0.02% sodium azide.
<b>Source</b>	Polyclonal, Rabbit,IgG
<b>Purification</b>	The antibody was affinity-purified from rabbit antiserum by affinity-chromatography using epitope-specific immunogen.
<b>Dilution</b>	IHC: 1/100 - 1/300. ELISA: 1/5000.. IF 1:50-200
<b>Concentration</b>	1 mg/ml
<b>Purity</b>	≥90%
<b>Storage Stability</b>	-20°C/1 year
<b>Synonyms</b>	RERG; Ras-related and estrogen-regulated growth inhibitor
<b>Observed Band</b>	
<b>Cell Pathway</b>	Cytoplasm .
<b>Tissue Specificity</b>	Detected in heart, brain, placenta, lung, liver, skin, kidney and pancreas. Detected in estrogen receptor-positive breast-derived cell lines, but not in estrogen receptor-negative cell lines. Expression is decreased or lost in a significant proportion of primary breast tumors with poor clinical prognosis.
<b>Function</b>	disease:Loss of RERG expression may contribute to tumorigenesis in breast. RERG expression is decreased or lost in a significant proportion of primary breast tumors with poor clinical prognosis. High expression of RERG correlates with long relapse-free survival times.,function:Binds GDP/GTP and possesses intrinsic GTPase activity. Has higher affinity for GDP than for GTP. In cell lines overexpression leads to a reduction in the rate of proliferation, colony formation and in tumorigenic potential.,induction:Up-regulated by estradiol. Down-regulated by tamoxifen.,similarity:Belongs to the small GTPase superfamily. Ras family.,tissue specificity:Detected in heart, brain, placenta, lung, liver, skin, kidney and pancreas. Detected in estrogen receptor-positive breast-derived cell lines, but

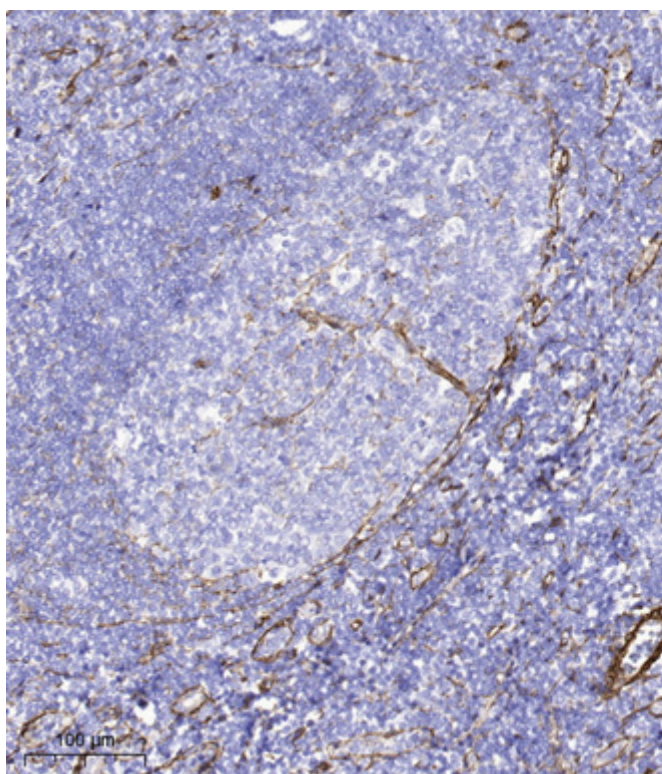
**Nanjing BYabscience technology Co.,Ltd**



not in estrogen receptor-negative cell lines.,

<b>Background</b>	RERG, a member of the RAS superfamily of GTPases, inhibits cell proliferation and tumor formation (Finlin et al., 2001 [PubMed 11533059]).[supplied by OMIM, Mar 2009],
<b>matters needing attention</b>	Avoid repeated freezing and thawing!
<b>Usage suggestions</b>	This product can be used in immunological reaction related experiments. For more information, please consult technical personnel.

## Products Images



Immunohistochemical analysis of paraffin-embedded human tonsil. 1, Tris-EDTA,pH9.0 was used for antigen retrieval. 2 Antibody was diluted at 1:200(4° overnight.3,Secondary antibody was diluted at 1:200(room temperature, 45min).

**Nanjing BYabscience technology Co.,Ltd**

网址: [www.njbybio.com](http://www.njbybio.com)

官方热线: 025-5229-8998

监督电话: 15950492658