



Rho GDly Polyclonal Antibody

Catalog No	BYab-16243
Isotype	IgG
Reactivity	Human;Rat;Mouse;
Applications	WB;ELISA;IHC
Gene Name	ARHGDIG
Protein Name	Rho GDP-dissociation inhibitor 3
Immunogen	Synthesized peptide derived from Rho GDly . at AA range: 110-190
Specificity	Rho GDly Polyclonal Antibody detects endogenous levels of Rho GDly protein.
Formulation	Liquid in PBS containing 50% glycerol, 0.5% BSA and 0.02% sodium azide.
Source	Polyclonal, Rabbit,IgG
Purification	The antibody was affinity-purified from rabbit antiserum by affinity-chromatography using epitope-specific immunogen.
Dilution	WB 1:500-2000;IHC-p 1:50-300; ELISA 2000-20000
Concentration	1 mg/ml
Purity	≥90%
Storage Stability	-20°C/1 year
Synonyms	ARHGDIG; Rho GDP-dissociation inhibitor 3; Rho GDI 3; Rho-GDI gamma
Observed Band	25kD
Cell Pathway	Cytoplasm.
Tissue Specificity	Primarily expressed in pancreas and brain.
Function	function:Inhibits GDP/GTP exchange reaction of RhoB. Interacts specifically with the GDP- and GTP-bound forms of post-translationally processed Rhob and Rhog proteins, both of which show a growth-regulated expression in mammalian cells. Stimulates the release of the GDP-bound but not the GTP-bound RhoB protein. Also inhibits the GDP/GTP exchange of RhoB but shows less ability to inhibit the dissociation of prebound GTP.,similarity:Belongs to the Rho GDI family.,tissue specificity:Primarily expressed in pancreas and brain.,
Background	The GDP-dissociation inhibitors (GDIs) play a primary role in modulating the activation of GTPases by inhibiting the exchange of GDP for GTP. See ARHGDIB (MIM 602843).[supplied by OMIM, Nov 2010],

Nanjing BYabscience technology Co.,Ltd

网址: www.njbybio.com

官方热线: 025-5229-8998

监督电话: 15950492658



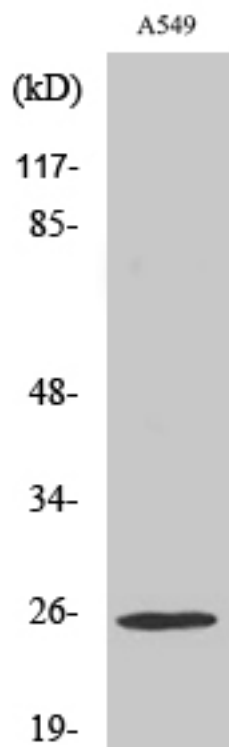
matters needing attention

Avoid repeated freezing and thawing!

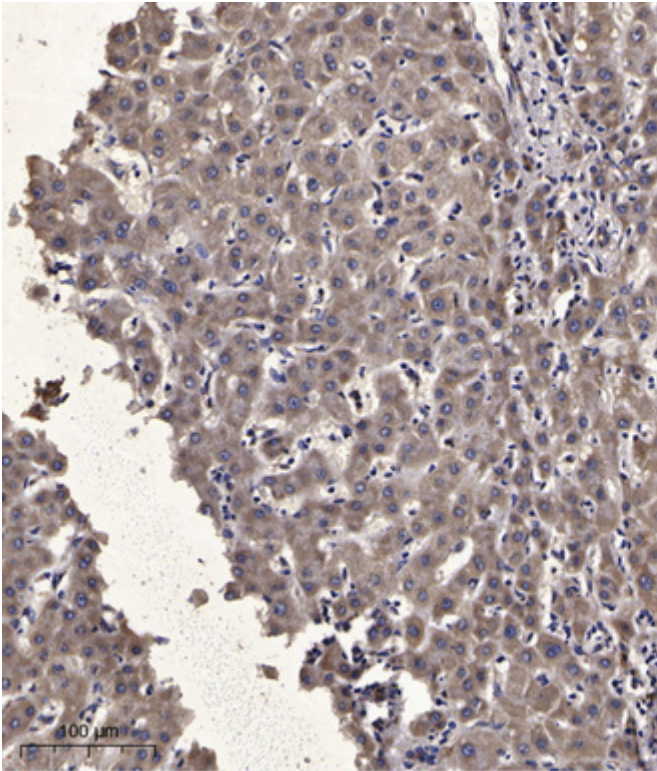
Usage suggestions

This product can be used in immunological reaction related experiments. For more information, please consult technical personnel.

Products Images



Western Blot analysis of various cells using Rho GDIγ Polyclonal Antibody



Immunohistochemical analysis of paraffin-embedded human liver cancer. 1, Antibody was diluted at 1:200(4° overnight). 2, Tris-EDTA,pH9.0 was used for antigen retrieval. 3,Secondary antibody was diluted at 1:200(room temperature, 45min).