



GABAA Rβ1 (phospho Ser434) Polyclonal Antibody

Catalog No	BYab-16337
Isotype	IgG
Reactivity	Human;Mouse;Rat;Monkey
Applications	WB;IHC;IF;ELISA
Gene Name	GABRB1
Protein Name	Gamma-aminobutyric acid receptor subunit beta-1
Immunogen	The antiserum was produced against synthesized peptide derived from human GABA-RB around the phosphorylation site of Ser434. AA range:401-450
Specificity	Phospho-GABAA Rβ1 (S434) Polyclonal Antibody detects endogenous levels of GABAA Rβ1 protein only when phosphorylated at S434.
Formulation	Liquid in PBS containing 50% glycerol, 0.5% BSA and 0.02% sodium azide.
Source	Polyclonal, Rabbit,IgG
Purification	The antibody was affinity-purified from rabbit antiserum by affinity-chromatography using epitope-specific immunogen.
Dilution	WB: 1/500 - 1/2000. IHC: 1/100 - 1/300. ELISA: 1/40000.. IF 1:50-200
Concentration	1 mg/ml
Purity	≥90%
Storage Stability	-20°C/1 year
Synonyms	GABRB1; Gamma-aminobutyric acid receptor subunit beta-1; GABA(A) receptor subunit beta-1
Observed Band	55kD
Cell Pathway	Cell junction, synapse, postsynaptic cell membrane ; Multi-pass membrane protein . Cell membrane ; Multi-pass membrane protein .
Tissue Specificity	Brain,Epithelium,
Function	function:GABA, the major inhibitory neurotransmitter in the vertebrate brain, mediates neuronal inhibition by binding to the GABA/benzodiazepine receptor and opening an integral chloride channel.,online information:Forbidden fruit - Issue 56 of March 2005,similarity:Belongs to the ligand-gated ionic channel (TC 1.A.9) family.,subunit:Bounds UBQLN1 (By similarity). Generally pentameric. There are five types of GABA(A) receptor chains: alpha, beta, gamma, delta, and rho.,
Background	The gamma-aminobutyric acid (GABA) A receptor is a multisubunit chloride channel that mediates the fastest inhibitory synaptic transmission in the central nervous system. This gene encodes GABA A receptor, beta 1 subunit. It is

Nanjing BYabscience technology Co.,Ltd



mapped to chromosome 4p12 in a cluster comprised of genes encoding alpha 4, alpha 2 and gamma 1 subunits of the GABA A receptor. Alteration of this gene is implicated in the pathogenetics of schizophrenia. [provided by RefSeq, Jul 2008],

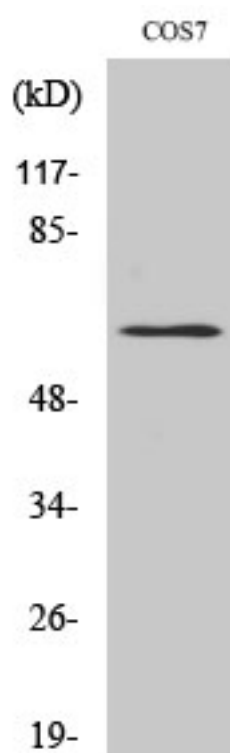
matters needing attention

Avoid repeated freezing and thawing!

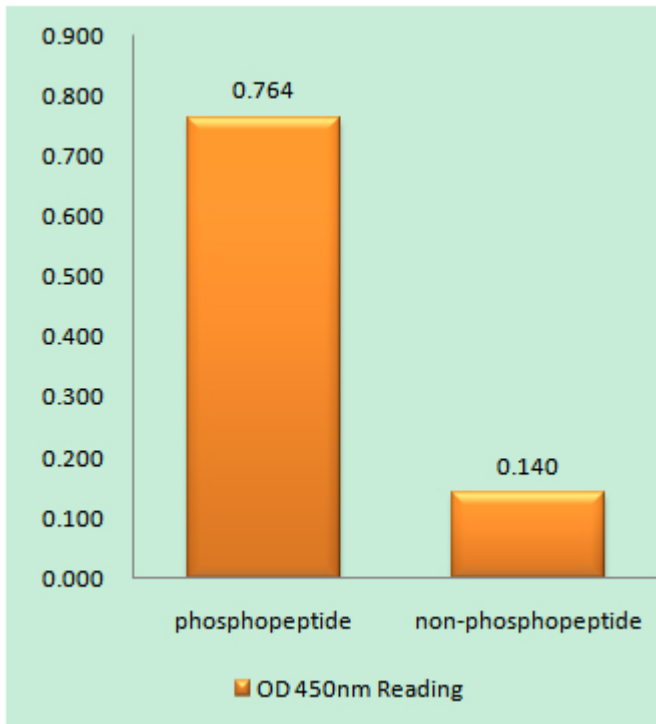
Usage suggestions

This product can be used in immunological reaction related experiments. For more information, please consult technical personnel.

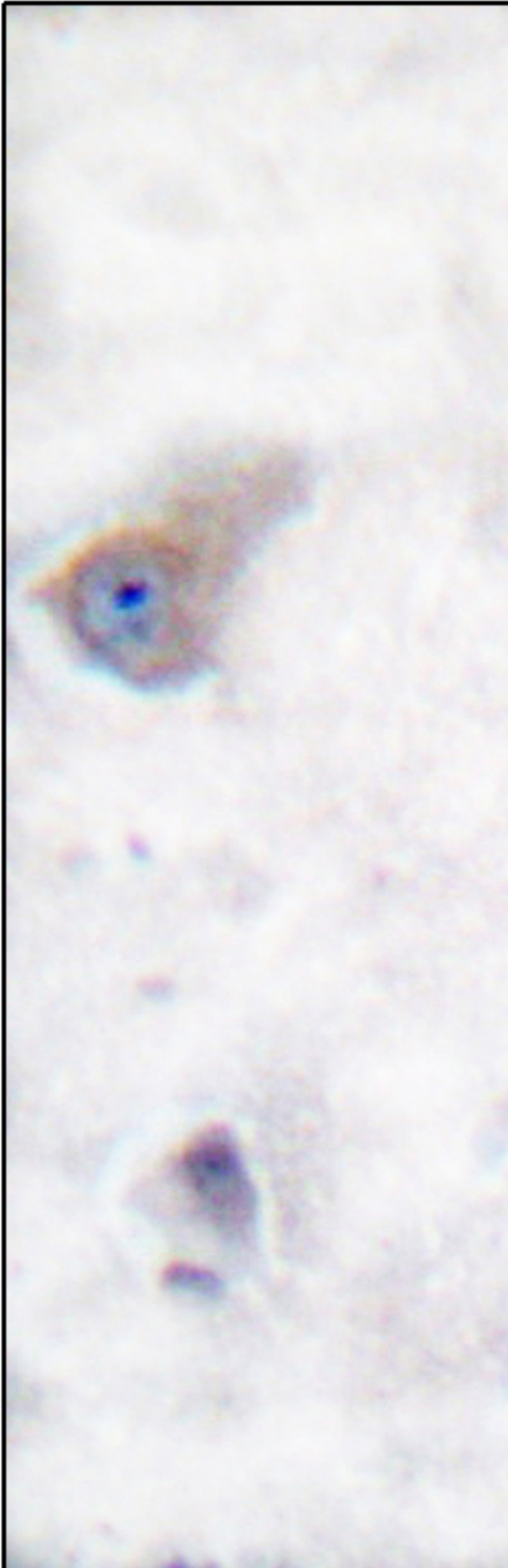
Products Images



Western Blot analysis of various cells using Phospho-GABAA Rβ1 (S434) Polyclonal Antibody



Enzyme-Linked Immunosorbent Assay (Phospho-ELISA) for Immunogen Phosphopeptide (Phospho-left) and Non-Phosphopeptide (Phospho-right), using GABA-RB (Phospho-Ser434) Antibody



Immunohistochemistry analysis of paraffin-embedded human brain, using GABA-RB (Phospho-Ser434) Antibody. The picture on the right is blocked with the phospho peptide.

nce technology Co.,Ltd

025-5229-8998

监督电话: 15950492658



Western blot analysis of lysates from COS7 cells, using GABA-RB (Phospho-Ser434) Antibody. The lane on the right is blocked with the phospho peptide.

GABA-RB (pSer434)



Nanjing BYabscience technology Co.,Ltd

网址: www.njbybio.com

官方热线: 025-5229-8998

监督电话: 15950492658