



NMDA ζ 1 (phospho Ser897) Polyclonal Antibody

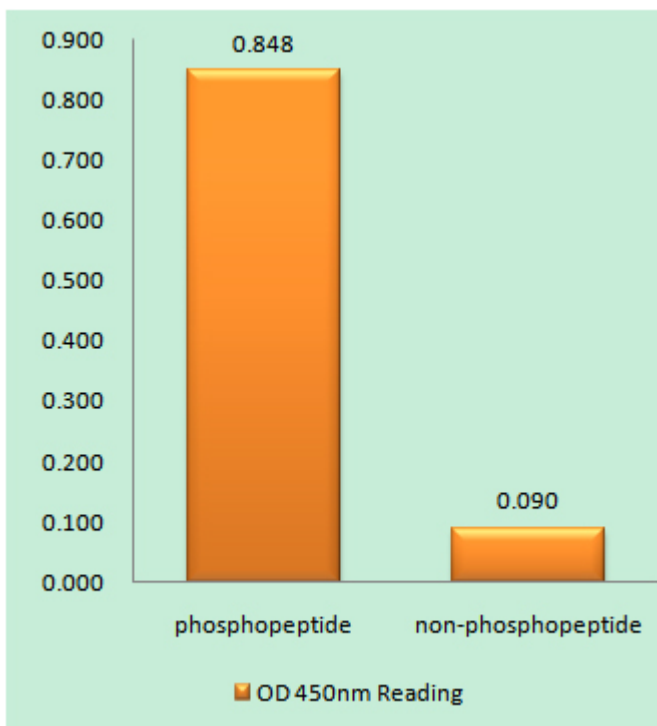
| | |
|---------------------------|---|
| Catalog No | BYab-16345 |
| Isotype | IgG |
| Reactivity | Human;Mouse;Rat |
| Applications | WB;IHC;IF;ELISA |
| Gene Name | GRIN1 |
| Protein Name | Glutamate [NMDA] receptor subunit zeta-1 |
| Immunogen | The antiserum was produced against synthesized peptide derived from human NMDAR1 around the phosphorylation site of Ser897. AA range:864-913 |
| Specificity | Phospho-NMDA ζ 1 (S897) Polyclonal Antibody detects endogenous levels of NMDA ζ 1 protein only when phosphorylated at S897. |
| Formulation | Liquid in PBS containing 50% glycerol, 0.5% BSA and 0.02% sodium azide. |
| Source | Polyclonal, Rabbit,IgG |
| Purification | The antibody was affinity-purified from rabbit antiserum by affinity-chromatography using epitope-specific immunogen. |
| Dilution | WB: 1/500 - 1/2000. IHC: 1/100 - 1/300. ELISA: 1/10000.. IF 1:50-200 |
| Concentration | 1 mg/ml |
| Purity | ≥90% |
| Storage Stability | -20°C/1 year |
| Synonyms | GRIN1; NMDAR1; Glutamate [NMDA] receptor subunit zeta-1; N-methyl-D-aspartate receptor subunit NR1; NMD-R1 |
| Observed Band | 120kD |
| Cell Pathway | Cell membrane ; Multi-pass membrane protein . Cell junction, synapse, postsynaptic cell membrane . Cell junction, synapse, postsynaptic density . Enriched in postsynaptic plasma membrane and postsynaptic densities. . |
| Tissue Specificity | Brain,Cerebellum,Hippocampus, |
| Function | function:NMDA receptor subtype of glutamate-gated ion channels with high calcium permeability and voltage-dependent sensitivity to magnesium. Mediated by glycine. This protein plays a key role in synaptic plasticity, synaptogenesis, excitotoxicity, memory acquisition and learning. It mediates neuronal functions in glutamate neurotransmission. Is involved in the cell surface targeting of NMDA receptors.,online information:NMDA receptor entry,PTM:NMDA is probably regulated by C-terminal phosphorylation of an isoform of NR1 by PKC. Dephosphorylated on Ser-897 probably by protein phosphatase 2A (PPP2CB). Its phosphorylated state is influenced by the formation of the NMDAR-PPP2CB |

Nanjing BYabscience technology Co.,Ltd



| | |
|----------------------------------|---|
| | complex and the NMDAR channel activity.,similarity:Belongs to the glutamate-gated ion channel (TC 1.A.10) family.,subcellular location:Enriched in post-synaptic plasma membrane and post-synaptic densities.,subunit:Fo |
| Background | The protein encoded by this gene is a critical subunit of N-methyl-D-aspartate receptors, members of the glutamate receptor channel superfamily which are heteromeric protein complexes with multiple subunits arranged to form a ligand-gated ion channel. These subunits play a key role in the plasticity of synapses, which is believed to underlie memory and learning. Cell-specific factors are thought to control expression of different isoforms, possibly contributing to the functional diversity of the subunits. Alternatively spliced transcript variants have been described. [provided by RefSeq, Jul 2008], |
| matters needing attention | Avoid repeated freezing and thawing! |
| Usage suggestions | This product can be used in immunological reaction related experiments. For more information, please consult technical personnel. |

Products Images



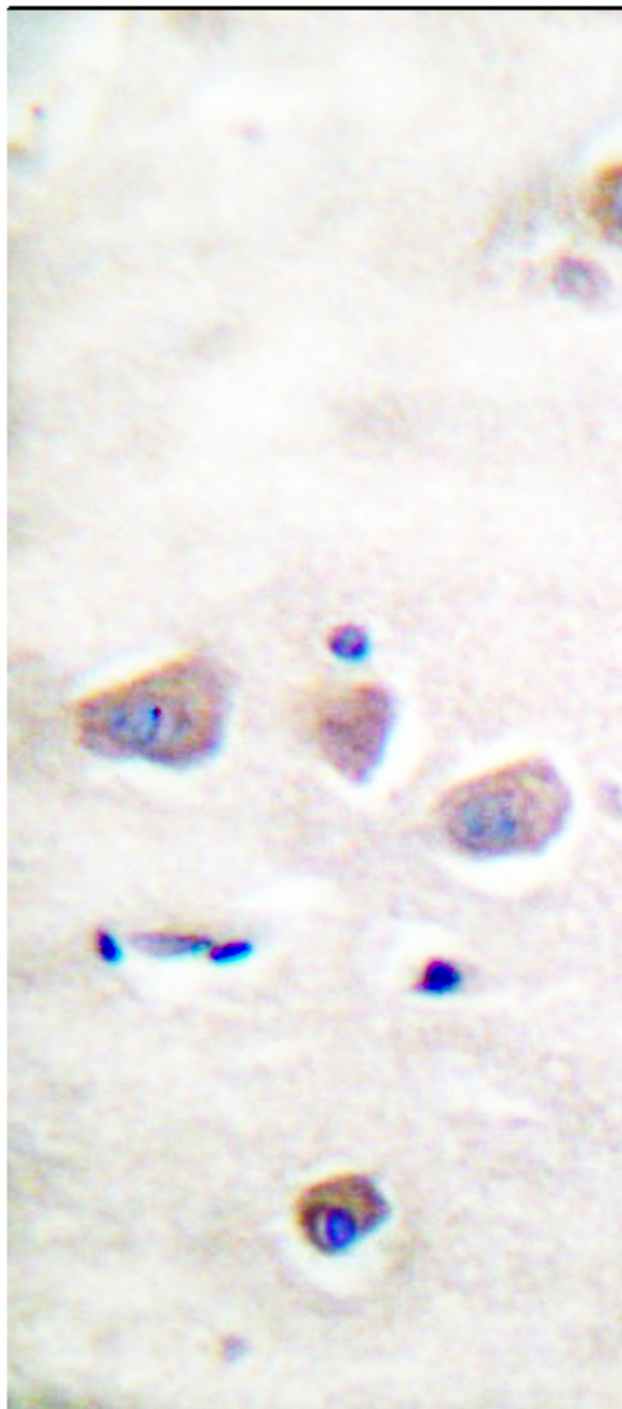
Enzyme-Linked Immunosorbent Assay (Phospho-ELISA) for Immunogen Phosphopeptide (Phospho-left) and Non-Phosphopeptide (Phospho-right), using NMDAR1 (Phospho-Ser897) Antibody

Nanjing BYabscience technology Co.,Ltd

网址: www.njbybio.com

官方热线: 025-5229-8998

监督电话: 15950492658



Immunohistochemistry analysis of paraffin-embedded human brain, using NMDAR1 (Phospho-Ser897) Antibody. The picture on the right is blocked with the phospho peptide.



Western blot analysis of lysates from LOVO cells, using NMDAR1 (Phospho-Ser897) Antibody. The lane on the right is blocked with the phospho peptide.

NMDAR1 (pSer897)



Nanjing BYabscience technology Co.,Ltd

网址: www.njbybio.com

官方热线: 025-5229-8998

监督电话: 15950492658