



NCKX3 Polyclonal Antibody

Catalog No	BYab-16479
Isotype	IgG
Reactivity	Human;Mouse;Rat
Applications	WB;ELISA
Gene Name	SLC24A3
Protein Name	Sodium/potassium/calcium exchanger 3
Immunogen	The antiserum was produced against synthesized peptide derived from human SLC24A3. AA range:354-403
Specificity	NCKX3 Polyclonal Antibody detects endogenous levels of NCKX3 protein.
Formulation	Liquid in PBS containing 50% glycerol, 0.5% BSA and 0.02% sodium azide.
Source	Polyclonal, Rabbit,IgG
Purification	The antibody was affinity-purified from rabbit antiserum by affinity-chromatography using epitope-specific immunogen.
Dilution	Western Blot: 1/500 - 1/2000. ELISA: 1/20000. Not yet tested in other applications.
Concentration	1 mg/ml
Purity	≥90%
Storage Stability	-20°C/1 year
Synonyms	SLC24A3; NCKX3; Sodium/potassium/calcium exchanger 3; Na(+)/K(+)/Ca(2+)-exchange protein 3; Solute carrier family 24 member 3
Observed Band	60kD
Cell Pathway	Cell membrane ; Multi-pass membrane protein .
Tissue Specificity	Abundant in the brain (PubMed:11294880). Expressed at low levels in the aorta, uterus and intestine (PubMed:11294880).
Function	function:Transports 1 Ca(2+) and 1 K(+) in exchange for 4 Na(+).,similarity:Belongs to the sodium/potassium/calcium exchanger family. SLC24A subfamily.,tissue specificity:Abundant in the brain. Expressed at low levels in the aorta, uterus and intestine.,
Background	Plasma membrane sodium/calcium exchangers are an important component of intracellular calcium homeostasis and electrical conduction. Potassium-dependent sodium/calcium exchangers such as SLC24A3 are believed to transport 1 intracellular calcium and 1 potassium ion in exchange for 4 extracellular sodium ions (Kraev et al., 2001 [PubMed 11294880]).[supplied by OMIM, Mar 2008],

Nanjing BYabscience technology Co.,Ltd



matters needing attention

Avoid repeated freezing and thawing!

Usage suggestions

This product can be used in immunological reaction related experiments. For more information, please consult technical personnel.

Products Images



K562

Western blot analysis of SLC24A3 Antibody. The lane on the right is blocked with the SLC24A3 peptide.

SLC24A3

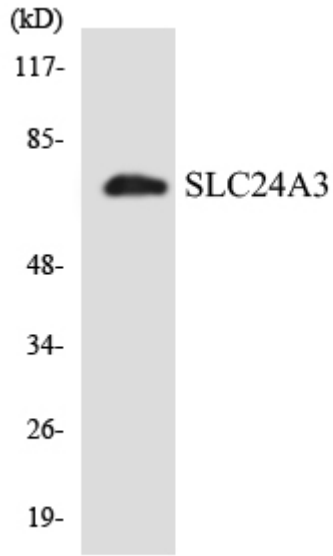


Nanjing BYabs science technology Co.,Ltd

网址: www.njbybio.com

官方热线: 025-5229-8998

监督电话: 15950492658



Western blot analysis of the lysates from K562 cells using SLC24A3 antibody.