



# Scn4b Polyclonal Antibody

Catalog No	BYab-16498
Isotype	IgG
Reactivity	Human;Rat;Mouse;
Applications	WB;IHC;IF;ELISA
Gene Name	SCN4B
Protein Name	Sodium channel subunit beta-4
Immunogen	The antiserum was produced against synthesized peptide derived from human SCN4B. AA range:61-110
Specificity	Scn4b Polyclonal Antibody detects endogenous levels of Scn4b protein.
Formulation	Liquid in PBS containing 50% glycerol, 0.5% BSA and 0.02% sodium azide.
Source	Polyclonal, Rabbit,IgG
Purification	The antibody was affinity-purified from rabbit antiserum by affinity-chromatography using epitope-specific immunogen.
Dilution	WB: 1/500 - 1/2000. IHC: 1/100 - 1/300. ELISA: 1/10000.. IF 1:50-200
Concentration	1 mg/ml
Purity	≥90%
Storage Stability	-20°C/1 year
Synonyms	SCN4B; Sodium channel subunit beta-4
Observed Band	27kD
Cell Pathway	Cell membrane ; Single-pass type I membrane protein .
Tissue Specificity	Expressed at a high level in dorsal root ganglia, at a lower level in brain, spinal cord, skeletal muscle and heart. Expressed in the atrium.
Function	disease:Defects in SCN4B are the cause of long QT syndrome type 10 (LQT10) [MIM:611819]. Long QT syndromes are heart disorders characterized by a prolonged QT interval on the ECG and polymorphic ventricular arrhythmias. They cause syncope and sudden death in response to exercise or emotional stress. They can present with a sentinel event of sudden cardiac death in infancy.,function:Modulates channel gating kinetics. Causes negative shifts in the voltage dependence of activation of certain alpha sodium channels, but does not affect the voltage dependence of inactivation.,PTM:Contains a number of interchain disulfide bonds with SCN2A.,similarity:Contains 1 Ig-like C2-type (immunoglobulin-like) domain.,subunit:The voltage-sensitive sodium channel consists of an ion conducting pore forming alpha-subunit regulated by one or

Nanjing BYabscience technology Co.,Ltd



more beta-1, beta-2, beta-3 and/or beta-4 subunits. Beta-1 and beta-

<b>Background</b>	The protein encoded by this gene is one of several sodium channel beta subunits. These subunits interact with voltage-gated alpha subunits to change sodium channel kinetics. The encoded transmembrane protein forms interchain disulfide bonds with SCN2A. Defects in this gene are a cause of long QT syndrome type 10 (LQT10). Three protein-coding and one non-coding transcript variant have been found for this gene.[provided by RefSeq, Mar 2009],
<b>matters needing attention</b>	Avoid repeated freezing and thawing!
<b>Usage suggestions</b>	This product can be used in immunological reaction related experiments. For more information, please consult technical personnel.

## Products Images



Western Blot analysis of various cells using Scn4b Polyclonal Antibody



H

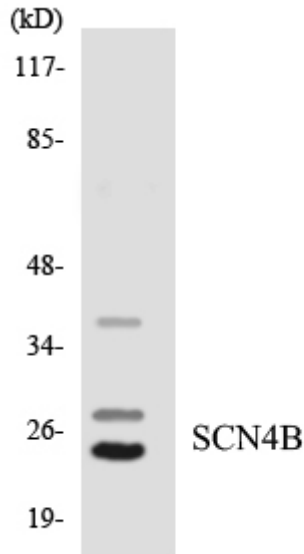
Western blot analysis of lysates from HepG2 and Jurkat cells, using SCN4B Antibody. The lane on the right is blocked with the synthesized peptide.

SCN4B --

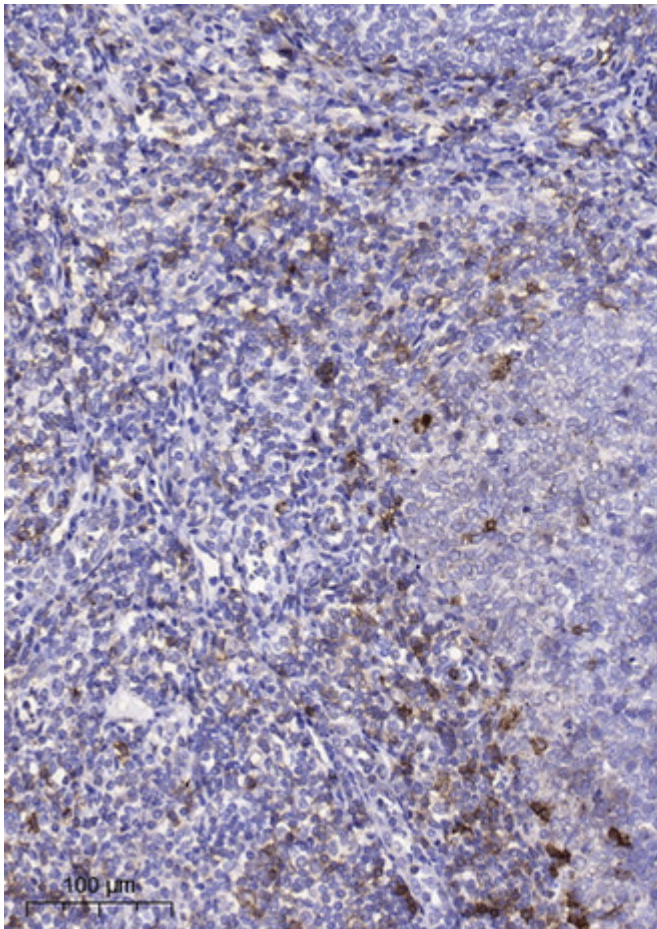
nce technology Co.,Ltd

025-5229-8998

监督电话：15950492658



Western blot analysis of the lysates from HeLa cells using SCN4B antibody.



Immunohistochemical analysis of paraffin-embedded human tonsil. 1, Antibody was diluted at 1:200(4° overnight). 2, Tris-EDTA,pH9.0 was used for antigen retrieval. 3,Secondary antibody was diluted at 1:200(room temperature, 45min).