



# Cdc25B (phospho Ser323) Polyclonal Antibody

Catalog No	BYab-16584
Isotype	IgG
Reactivity	Human;Mouse;Rat
Applications	WB;IHC;IF;ELISA
Gene Name	CDC25B
Protein Name	M-phase inducer phosphatase 2
Immunogen	The antiserum was produced against synthesized peptide derived from human CDC25B around the phosphorylation site of Ser323. AA range:289-338
Specificity	Phospho-Cdc25B (S323) Polyclonal Antibody detects endogenous levels of Cdc25B protein only when phosphorylated at S323.
Formulation	Liquid in PBS containing 50% glycerol, 0.5% BSA and 0.02% sodium azide.
Source	Polyclonal, Rabbit,IgG
Purification	The antibody was affinity-purified from rabbit antiserum by affinity-chromatography using epitope-specific immunogen.
Dilution	WB: 1/500 - 1/2000. ELISA: 1/20000.. IF 1:50-200
Concentration	1 mg/ml
Purity	≥90%
Storage Stability	-20°C/1 year
Synonyms	CDC25B; CDC25HU2; M-phase inducer phosphatase 2; Dual specificity phosphatase Cdc25B
Observed Band	70kD
Cell Pathway	Cytoplasm, cytoskeleton, microtubule organizing center, centrosome . Cytoplasm, cytoskeleton, spindle pole .
Tissue Specificity	Brain,Rectum tumor,
Function	catalytic activity:Protein tyrosine phosphate + H(2)O = protein tyrosine + phosphate.,enzyme regulation:Stimulated by B-type cyclins.,function:Tyrosine protein phosphatase which functions as a dosage-dependent inducer of mitotic progression. Directly dephosphorylates CDC2 and stimulates its kinase activity. The three isoforms seem to have a different level of activity.,PTM:Phosphorylated by BRSK1 in vitro. Phosphorylated by CHEK1, which inhibits the activity of this protein.,similarity:Belongs to the MPI phosphatase family.,similarity:Contains 1 rhodanese domain.,

Nanjing BYabscience technology Co.,Ltd



Background	cell division cycle 25B(CDC25B) Homo sapiens CDC25B is a member of the CDC25 family of phosphatases. CDC25B activates the cyclin dependent kinase CDC2 by removing two phosphate groups and it is required for entry into mitosis. CDC25B shuttles between the nucleus and the cytoplasm due to nuclear localization and nuclear export signals. The protein is nuclear in the M and G1 phases of the cell cycle and moves to the cytoplasm during S and G2. CDC25B has oncogenic properties, although its role in tumor formation has not been determined. Multiple transcript variants for this gene exist. [provided by RefSeq, Jul 2008],
matters needing attention	Avoid repeated freezing and thawing!
Usage suggestions	This product can be used in immunological reaction related experiments. For more information, please consult technical personnel.

Nanjing BYabscience technology Co.,Ltd

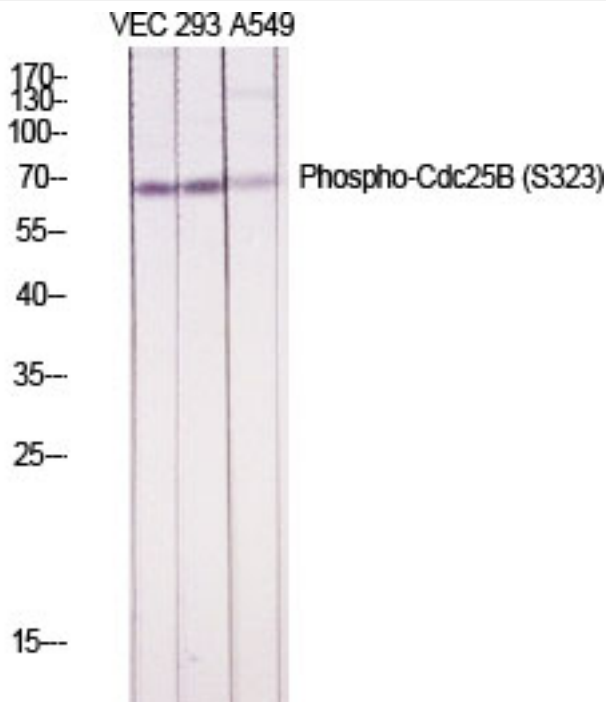
网址: [www.njbybio.com](http://www.njbybio.com)

官方热线: 025-5229-8998

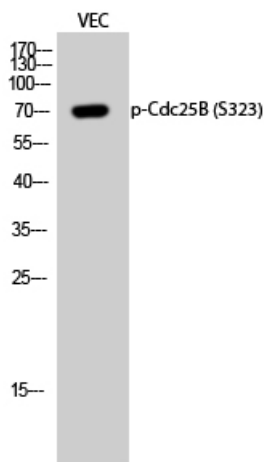
监督电话: 15950492658



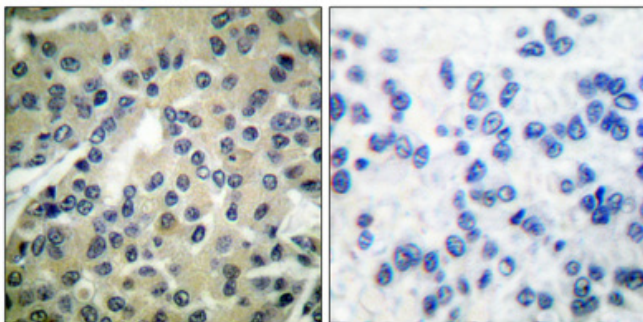
## Products Images



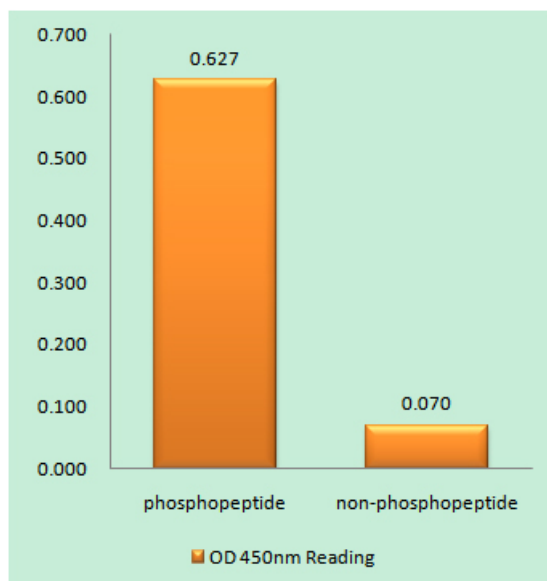
Western Blot analysis of various cells using  
Phospho-Cdc25B (S323) Polyclonal Antibody diluted at  
1:1000



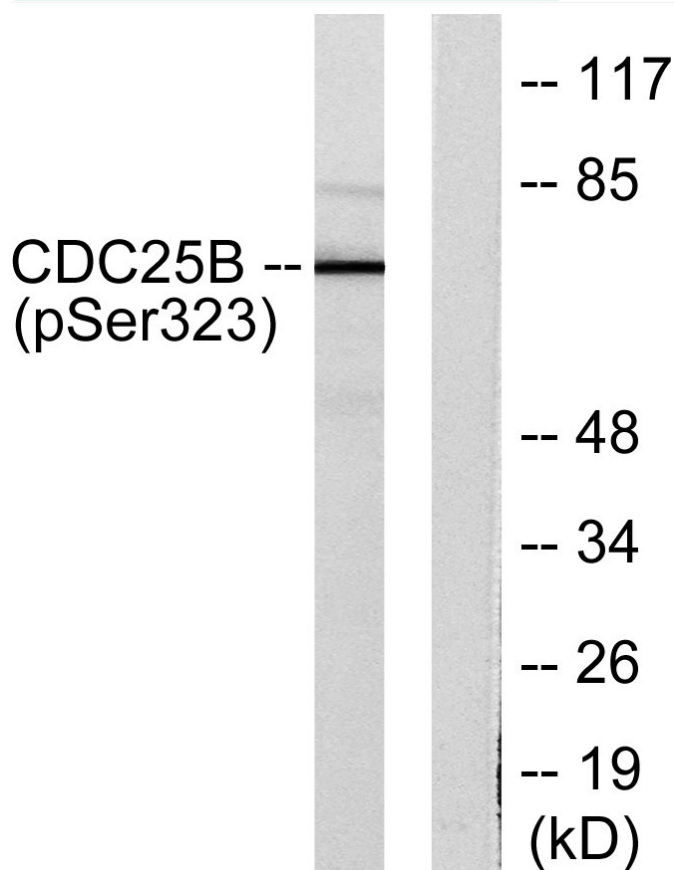
Western Blot analysis of VEC cells using  
Phospho-Cdc25B (S323) Polyclonal Antibody diluted at  
1:1000



Immunohistochemical analysis of paraffin-embedded  
Human breast cancer. Antibody was diluted at 1:100(4°  
overnight). High-pressure and temperature  
Tris-EDTA,pH8.0 was used for antigen retrieval.  
Negative contrl (right) obtained from antibody was  
pre-absorbed by immunogen peptide.



Enzyme-Linked Immunosorbent Assay (Phospho-ELISA) for Immunogen Phosphopeptide (Phospho-left) and Non-Phosphopeptide (Phospho-right), using CDC25B (Phospho-Ser323) Antibody



Western blot analysis of lysates from NIH/3T3 cells treated with PMA 125ng/ml 30', using CDC25B (Phospho-Ser323) Antibody. The lane on the right is blocked with the phospho peptide.