



# Cdk1/2/3 (phospho Thr14) Polyclonal Antibody

<b>Catalog No</b>	BYab-16586
<b>Isotype</b>	IgG
<b>Reactivity</b>	Human;Mouse;Rat;Monkey
<b>Applications</b>	WB;IF;ELISA
<b>Gene Name</b>	CDK1/CDK2/CDK3
<b>Protein Name</b>	Cyclin-dependent kinase 1/2/3
<b>Immunogen</b>	The antiserum was produced against synthesized peptide derived from human CDK1/CDC2 around the phosphorylation site of Thr14. AA range:1-50
<b>Specificity</b>	Phospho-Cdk1/2/3 (T14) Polyclonal Antibody detects endogenous levels of Cdk1/2/3 protein only when phosphorylated at T14.
<b>Formulation</b>	Liquid in PBS containing 50% glycerol, 0.5% BSA and 0.02% sodium azide.
<b>Source</b>	Polyclonal, Rabbit,IgG
<b>Purification</b>	The antibody was affinity-purified from rabbit antiserum by affinity-chromatography using epitope-specific immunogen.
<b>Dilution</b>	Western Blot: 1/500 - 1/2000. Immunofluorescence: 1/200 - 1/1000. ELISA: 1/5000. Not yet tested in other applications.
<b>Concentration</b>	1 mg/ml
<b>Purity</b>	≥90%
<b>Storage Stability</b>	-20°C/1 year
<b>Synonyms</b>	CDK1; CDC2; CDC28A; CDKN1; P34CDC2; Cyclin-dependent kinase 1; CDK1; Cell division control protein 2 homolog; Cell division protein kinase 1; p34 protein kinase; CDK2; CDKN2; Cyclin-dependent kinase 2; Cell division protein kinase 2; p33 pr
<b>Observed Band</b>	34kD
<b>Cell Pathway</b>	Nucleus. Cytoplasm. Mitochondrion . Cytoplasm, cytoskeleton, microtubule organizing center, centrosome . Cytoplasm, cytoskeleton, spindle. Cytoplasmic during the interphase. Colocalizes with SIRT2 on centrosome during prophase and on spindle fibers during metaphase of the mitotic cell cycle. Reversibly translocated from cytoplasm to nucleus when phosphorylated before G2-M transition when associated with cyclin-B1. Accumulates in mitochondria in G2-arrested cells upon DNA-damage.
<b>Tissue Specificity</b>	Isoform 2 is found in breast cancer tissues.
<b>Function</b>	catalytic activity:ATP + [DNA-directed RNA polymerase] = ADP + [DNA-directed RNA polymerase] phosphate.,catalytic activity:ATP + a protein = ADP + a

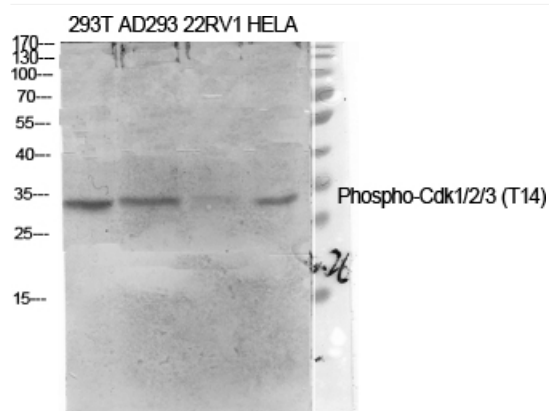
**Nanjing BYabscience technology Co.,Ltd**



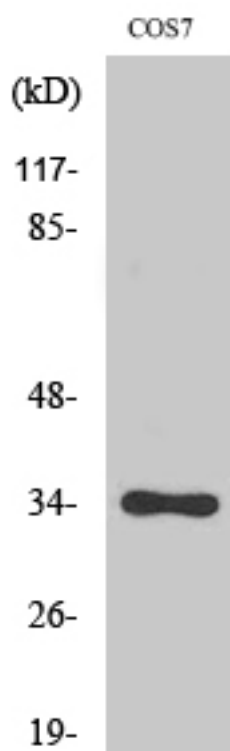
	<p>phosphoprotein.,enzyme regulation:Phosphorylation at Thr-14 or Tyr-15 inactivates the enzyme, while phosphorylation at Thr-161 activates it.,function:Plays a key role in the control of the eukaryotic cell cycle. It is required in higher cells for entry into S-phase and mitosis. p34 is a component of the kinase complex that phosphorylates the repetitive C-terminus of RNA polymerase II.,similarity:Belongs to the protein kinase superfamily.,similarity:Belongs to the protein kinase superfamily. CMGC Ser/Thr protein kinase family. CDC2/CDKX subfamily.,similarity:Contains 1 protein kinase domain.,subunit:Forms a stable but non-covalent complex with a regulatory subunit and with a cyclin. Interacts with DLGAP5. Isoform 2 is unable to complex with c</p>
Background	<p>cyclin dependent kinase 1(CDK1) Homo sapiens      The protein encoded by this gene is a member of the Ser/Thr protein kinase family. This protein is a catalytic subunit of the highly conserved protein kinase complex known as M-phase promoting factor (MPF), which is essential for G1/S and G2/M phase transitions of eukaryotic cell cycle. Mitotic cyclins stably associate with this protein and function as regulatory subunits. The kinase activity of this protein is controlled by cyclin accumulation and destruction through the cell cycle. The phosphorylation and dephosphorylation of this protein also play important regulatory roles in cell cycle control. Alternatively spliced transcript variants encoding different isoforms have been found for this gene. [provided by RefSeq, Mar 2009],</p>
matters needing attention	<p>Avoid repeated freezing and thawing!</p>
Usage suggestions	<p>This product can be used in immunological reaction related experiments. For more information, please consult technical personnel.</p>



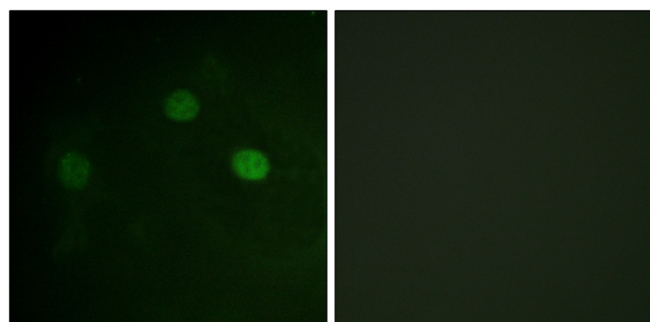
## Products Images



Western Blot analysis of various cells using Phospho-Cdk1/2/3 (T14) Polyclonal Antibody diluted at 1:2000



Western Blot analysis of COS7 cells using Phospho-Cdk1/2/3 (T14) Polyclonal Antibody diluted at 1:2000



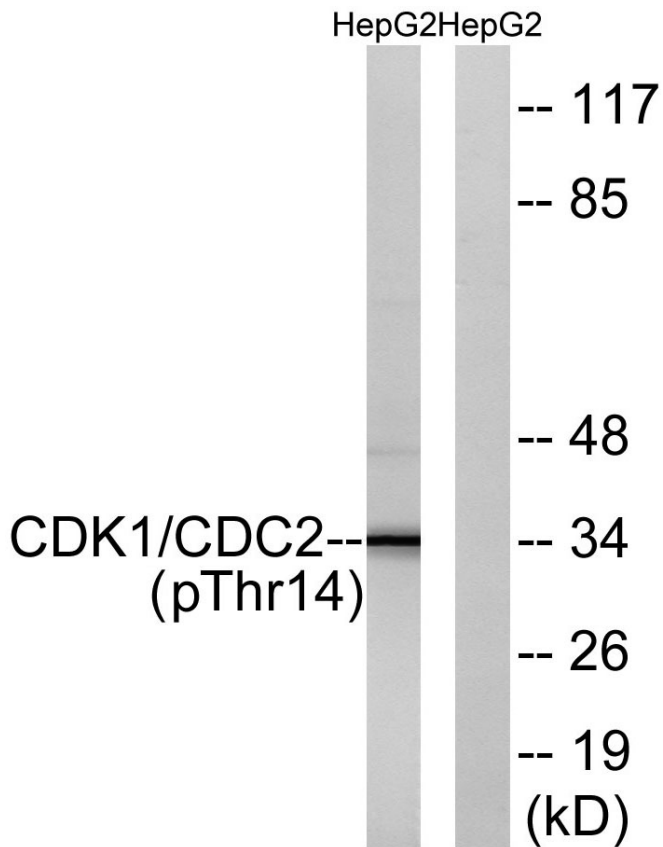
Immunofluorescence analysis of COS7 cells, using CDK1/CDC2 (Phospho-Thr14) Antibody. The picture on the right is blocked with the phospho peptide.

Nanjing BYabs science technology Co.,Ltd

网址: [www.njbybio.com](http://www.njbybio.com)

官方热线: 025-5229-8998

监督电话: 15950492658



Western blot analysis of lysates from HepG2 cells treated with Forskolin 40nM 30', using CDK1/CDC2 (Phospho-Thr14) Antibody. The lane on the right is blocked with the phospho peptide.