



NIFK (phospho Thr234) Polyclonal Antibody

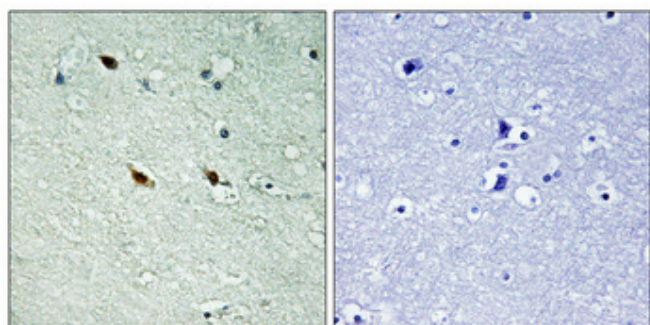
Catalog No	BYab-16639
Isotype	IgG
Reactivity	Human;Mouse
Applications	IHC;IF;ELISA
Gene Name	MKI67IP
Protein Name	MKI67 FHA domain-interacting nucleolar phosphoprotein
Immunogen	The antiserum was produced against synthesized peptide derived from human NIFK around the phosphorylation site of Thr234. AA range:200-249
Specificity	Phospho-NIFK (T234) Polyclonal Antibody detects endogenous levels of NIFK protein only when phosphorylated at T234.
Formulation	Liquid in PBS containing 50% glycerol, 0.5% BSA and 0.02% sodium azide.
Source	Polyclonal, Rabbit,IgG
Purification	The antibody was affinity-purified from rabbit antiserum by affinity-chromatography using epitope-specific immunogen.
Dilution	Immunohistochemistry: 1/100 - 1/300. Immunofluorescence: 1/200 - 1/1000. ELISA: 1/40000. Not yet tested in other applications.
Concentration	1 mg/ml
Purity	≥90%
Storage Stability	-20°C/1 year
Synonyms	MKI67IP; NIFK; NOPP34; MKI67 FHA domain-interacting nucleolar phosphoprotein; Nucleolar phosphoprotein Nopp34; Nucleolar protein interacting with the FHA domain of pKI-67; hNIFK
Observed Band	
Cell Pathway	Nucleus, nucleolus. Chromosome. Localizes to mitotic chromosomes in conjunction with MKI67.
Tissue Specificity	Brain,Cervix carcinoma,Epithelium,Lung,Plac
Function	PTM:Sequentially phosphorylated on Thr-238, Thr-234 and Ser-230. Thr-234 is phosphorylated only when Thr-238 is phosphorylated. Likewise, phosphorylation at Ser-230 requires that Thr-234 and Thr-238 are phosphorylated. Phosphorylation enhances MKI67 binding.,similarity:Contains 1 RRM (RNA recognition motif) domain.,subcellular location:Localizes to mitotic chromosomes in conjunction with MKI67.,subunit:Binds to the FHA domain of MKI67; this interaction is enhanced in mitosis.,

Nanjing BYabscience technology Co.,Ltd

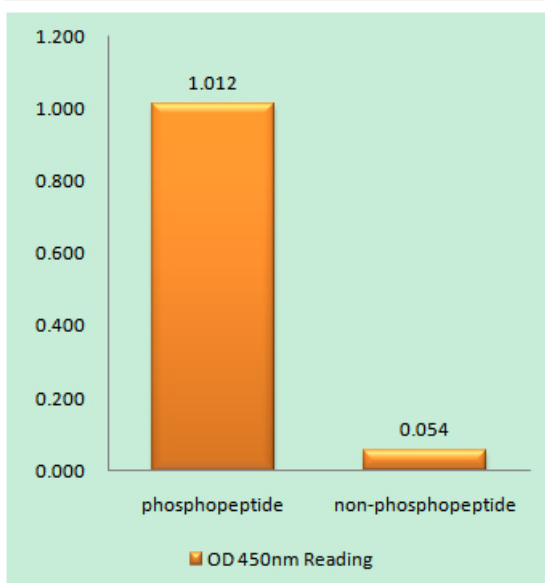


Background	This gene encodes a protein that interacts with the forkhead-associated domain of the Ki-67 antigen. The encoded protein may bind RNA and may play a role in mitosis and cell cycle progression. Multiple pseudogenes exist on chromosomes 5, 10, 12, 15, and 19.[provided by RefSeq, Jan 2009],
matters needing attention	Avoid repeated freezing and thawing!
Usage suggestions	This product can be used in immunological reaction related experiments. For more information, please consult technical personnel.

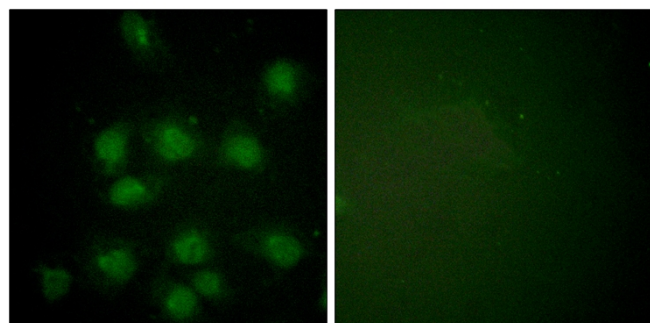
Products Images



Immunohistochemical analysis of paraffin-embedded Human brain. Antibody was diluted at 1:100(4° overnight). High-pressure and temperature Tris-EDTA,pH8.0 was used for antigen retrieval. Negative contrl (right) obtained from antibody was pre-absorbed by immunogen peptide.

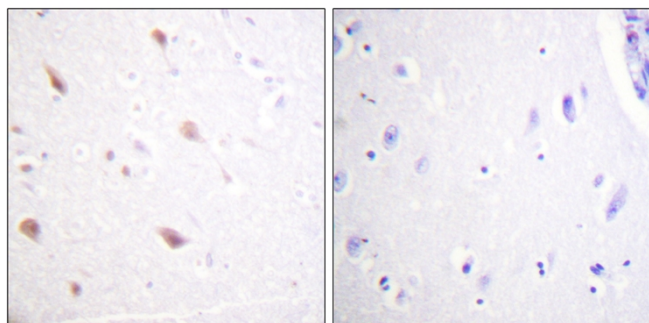


Enzyme-Linked Immunosorbent Assay (Phospho-ELISA) for Immunogen Phosphopeptide (Phospho-left) and Non-Phosphopeptide (Phospho-right), using NIFK (Phospho-Thr234) Antibody



Immunofluorescence analysis of HUVEC cells, using NIFK (Phospho-Thr234) Antibody. The picture on the right is blocked with the phospho peptide.

Nanjing BYabscience technology Co.,Ltd



Immunohistochemistry analysis of paraffin-embedded human brain, using NIKK (Phospho-Thr234) Antibody. The picture on the right is blocked with the phosphopeptide.