



Cdc6 Polyclonal Antibody

Catalog No	BYab-16690
Isotype	IgG
Reactivity	Human;Rat;Mouse;
Applications	WB;IHC;IF;ELISA
Gene Name	CDC6
Protein Name	Cell division control protein 6 homolog
Immunogen	The antiserum was produced against synthesized peptide derived from human CDC6. AA range:491-540
Specificity	Cdc6 Polyclonal Antibody detects endogenous levels of Cdc6 protein.
Formulation	Liquid in PBS containing 50% glycerol, 0.5% BSA and 0.02% sodium azide.
Source	Polyclonal, Rabbit,IgG
Purification	The antibody was affinity-purified from rabbit antiserum by affinity-chromatography using epitope-specific immunogen.
Dilution	WB: 1/500 - 1/2000. IHC: 1/100 - 1/300. ELISA: 1/20000.. IF 1:50-200
Concentration	1 mg/ml
Purity	≥90%
Storage Stability	-20°C/1 year
Synonyms	CDC6; CDC18L; Cell division control protein 6 homolog; CDC6-related protein; Cdc18-related protein; HsCdc18; p62(cdc6); HsCDC6
Observed Band	60kD
Cell Pathway	Nucleus . Cytoplasm . The protein is nuclear in G1 and cytoplasmic in S-phase cells (PubMed:9566895).
Tissue Specificity	Brain,Epithelium,
Function	function:Involved in the initiation of DNA replication. Also participates in checkpoint controls that ensure DNA replication is completed before mitosis is initiated.,similarity:Belongs to the CDC6/cdc18 family.,subcellular location:The protein is nuclear in G1 and cytoplasmic in S-phase cells.,subunit:Interacts with PCNA, ORC1L, cyclin-CDK and HUWE1.,
Background	The protein encoded by this gene is highly similar to Saccharomyces cerevisiae Cdc6, a protein essential for the initiation of DNA replication. This protein functions as a regulator at the early steps of DNA replication. It localizes in cell nucleus during cell cycle G1, but translocates to the cytoplasm at the start of S

Nanjing BYabscience technology Co.,Ltd



phase. The subcellular translocation of this protein during cell cycle is regulated through its phosphorylation by Cdks. Transcription of this protein was reported to be regulated in response to mitogenic signals through transcriptional control mechanism involving E2F proteins. [provided by RefSeq, Jul 2008],

matters needing attention

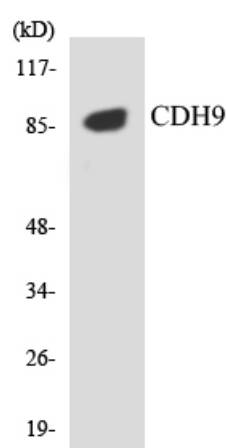
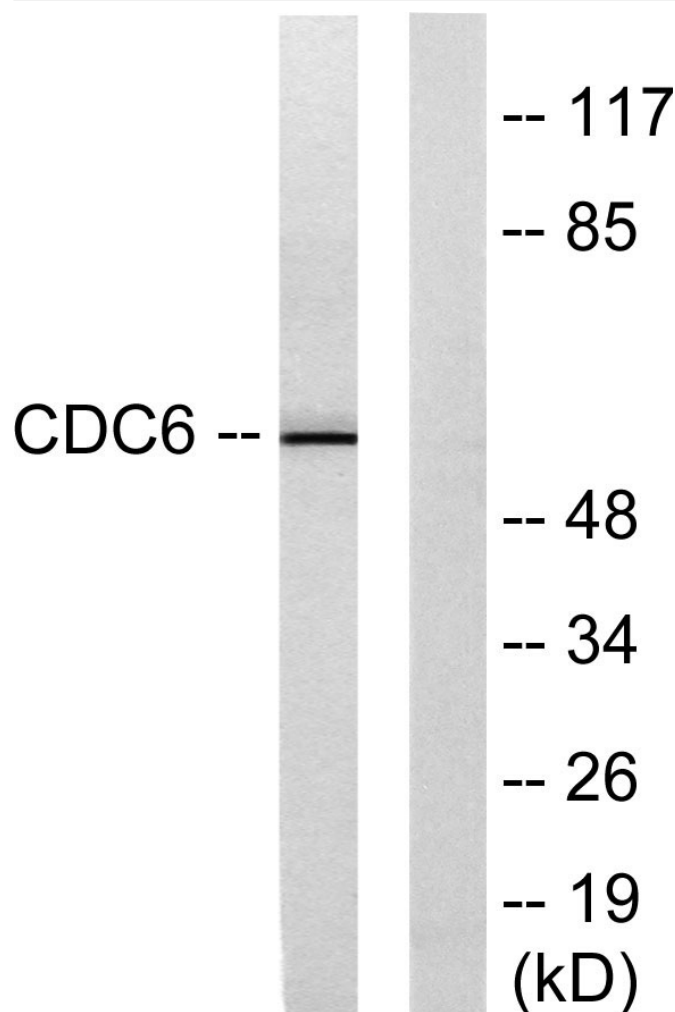
Avoid repeated freezing and thawing!

Usage suggestions

This product can be used in immunological reaction related experiments. For more information, please consult technical personnel.



Products Images



Western blot analysis of the lysates from HepG2 cells using CDH9 antibody.

Immunohistochemical analysis of paraffin-embedded human small intestinal carcinoma tissue. 1, primary Antibody was diluted at 1:200 (4° overnight). 2, Sodium citrate pH 6.0 was used for antigen retrieval (>98°

Nanjing BYabs science technology Co., Ltd



C,20min). 3,Secondary antibody was diluted at 1:200

