



# Cdc7 Polyclonal Antibody

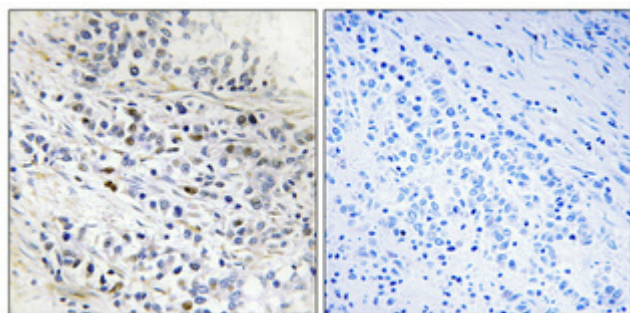
Catalog No	BYab-16691
Isotype	IgG
Reactivity	Human;Rat;Mouse;
Applications	WB;IHC;IF;ELISA
Gene Name	CDC7
Protein Name	Cell division cycle 7-related protein kinase
Immunogen	The antiserum was produced against synthesized peptide derived from human CDC7. AA range:1-50
Specificity	Cdc7 Polyclonal Antibody detects endogenous levels of Cdc7 protein.
Formulation	Liquid in PBS containing 50% glycerol, 0.5% BSA and 0.02% sodium azide.
Source	Polyclonal, Rabbit,IgG
Purification	The antibody was affinity-purified from rabbit antiserum by affinity-chromatography using epitope-specific immunogen.
Dilution	WB: 1/500 - 1/2000. IHC: 1/100 - 1/300. ELISA: 1/5000.. IF 1:50-200
Concentration	1 mg/ml
Purity	≥90%
Storage Stability	-20°C/1 year
Synonyms	CDC7; CDC7L1; Cell division cycle 7-related protein kinase; CDC7-related kinase; HsCdc7; huCdc7
Observed Band	70kD
Cell Pathway	Nucleus.
Tissue Specificity	Brain,Embryonal rhabdomyosarcoma,Liver,Testis,
Function	alternative products:A number of isoforms may be produced,catalytic activity:ATP + a protein = ADP + a phosphoprotein.,cofactor:Magnesium.,function:Seems to phosphorylate critical substrates that regulate the G1/S phase transition and/or DNA replication. Can phosphorylates MCM2 and MCM3.,similarity:Belongs to the protein kinase superfamily.,similarity:Belongs to the protein kinase superfamily. Ser/Thr protein kinase family. CDC7 subfamily.,similarity:Contains 1 protein kinase domain.,subunit:Forms a complex with either DBF4/DBF4A or DBF4B, leading to the activation of the kinase activity.,

Nanjing BYabscience technology Co.,Ltd

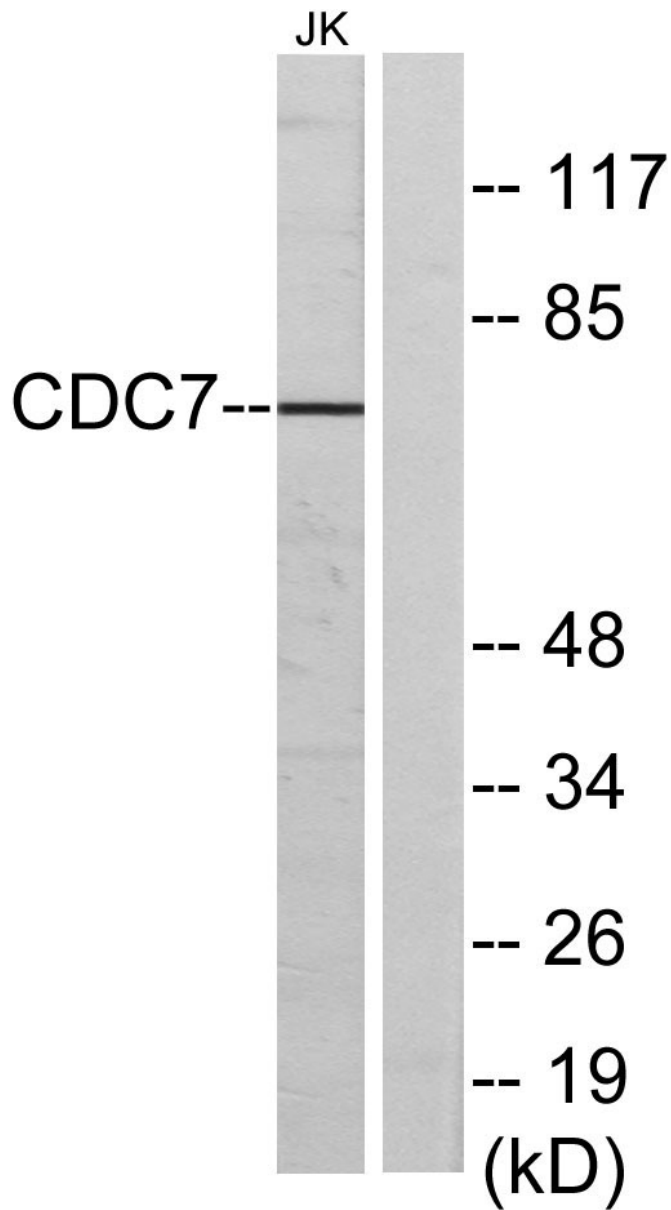


<b>Background</b>	This gene encodes a cell division cycle protein with kinase activity that is critical for the G1/S transition. The yeast homolog is also essential for initiation of DNA replication as cell division occurs. Overexpression of this gene product may be associated with neoplastic transformation for some tumors. Multiple alternatively spliced transcript variants that encode the same protein have been detected. [provided by RefSeq, Aug 2008],
<b>matters needing attention</b>	Avoid repeated freezing and thawing!
<b>Usage suggestions</b>	This product can be used in immunological reaction related experiments. For more information, please consult technical personnel.

## Products Images



Immunohistochemical analysis of paraffin-embedded Human lung cancer. Antibody was diluted at 1:100(4° overnight). High-pressure and temperature Tris-EDTA,pH8.0 was used for antigen retrieval. Negative contrl (right) obtained from antibody was pre-absorbed by immunogen peptide.



Western blot analysis of lysates from Jurkat cells, using CDC7 Antibody. The lane on the right is blocked with the synthesized peptide.