



CdcA3 Polyclonal Antibody

Catalog No	BYab-16692
Isotype	IgG
Reactivity	Human;Mouse;Rat
Applications	WB;IHC;IF;ELISA
Gene Name	CDCA3
Protein Name	Cell division cycle-associated protein 3
Immunogen	The antiserum was produced against synthesized peptide derived from human CDCA3. AA range:219-268
Specificity	CdcA3 Polyclonal Antibody detects endogenous levels of CdcA3 protein.
Formulation	Liquid in PBS containing 50% glycerol, 0.5% BSA and 0.02% sodium azide.
Source	Polyclonal, Rabbit,IgG
Purification	The antibody was affinity-purified from rabbit antiserum by affinity-chromatography using epitope-specific immunogen.
Dilution	Western Blot: 1/500 - 1/2000. Immunohistochemistry: 1/100 - 1/300. Immunofluorescence: 1/200 - 1/1000. ELISA: 1/5000. Not yet tested in other applications.
Concentration	1 mg/ml
Purity	≥90%
Storage Stability	-20°C/1 year
Synonyms	CDCA3; C8; GRCC8; TOME1; Cell division cycle-associated protein 3; Gene-rich cluster protein C8; Trigger of mitotic entry protein 1; TOME-1
Observed Band	28kD
Cell Pathway	Cytoplasm, cytosol .
Tissue Specificity	Brain,Placenta,Testis,Thymus,
Function	domain:The KEN box is required for the association with the APC/C-Cdh1 complex.,function:F-box-like protein which is required for entry into mitosis. Acts by participating to E3 ligase complexes that mediate the ubiquitination and degradation of WEE1 kinase at G2/M phase.,pathway:Protein modification; protein ubiquitination.,PTM:Phosphorylated upon DNA damage, probably by ATM or ATR.,PTM:Ubiquitinated and degraded by the APC/C-Cdh1 complex.,subunit:Interacts with SKP1A. Part of a SCF (SKP1-cullin-F-box) protein ligase complex.,

Nanjing BYabscience technology Co.,Ltd



Background

domain:The KEN box is required for the association with the APC/C-Cdh1 complex.,function:F-box-like protein which is required for entry into mitosis. Acts by participating to E3 ligase complexes that mediate the ubiquitination and degradation of WEE1 kinase at G2/M phase.,pathway:Protein modification; protein ubiquitination.,PTM:Phosphorylated upon DNA damage, probably by ATM or ATR.,PTM:Ubiquitinated and degraded by the APC/C-Cdh1 complex.,subunit:Interacts with SKP1A. Part of a SCF (SKP1-cullin-F-box) protein ligase complex.,

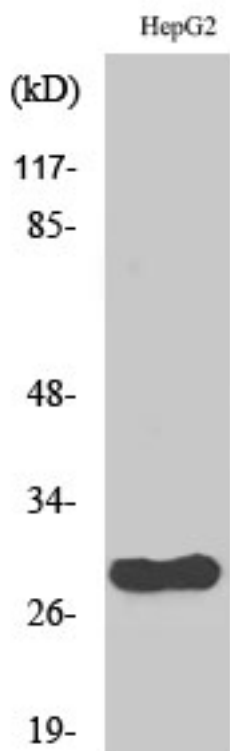
matters needing attention

Avoid repeated freezing and thawing!

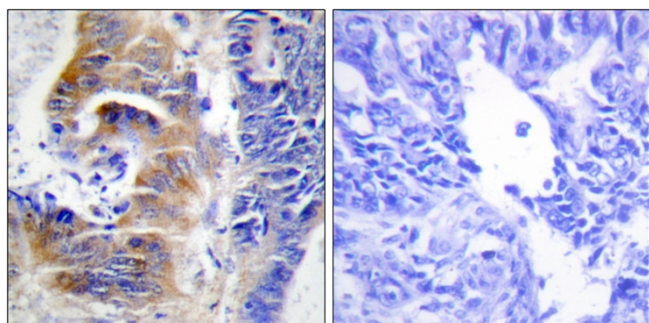
Usage suggestions

This product can be used in immunological reaction related experiments. For more information, please consult technical personnel.

Products Images

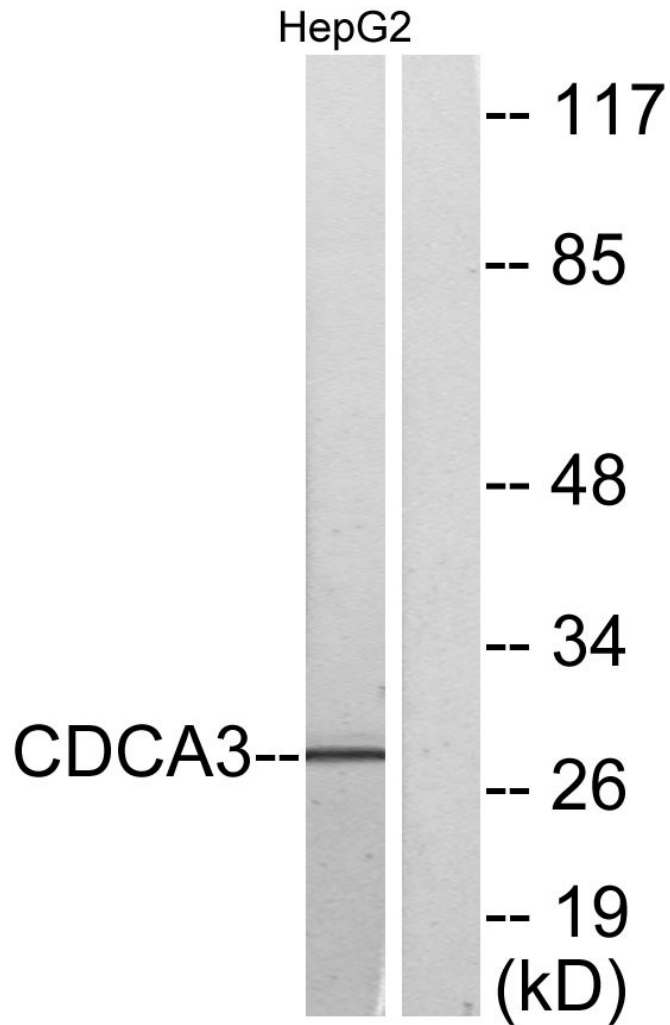


Western Blot analysis of various cells using CdcA3 Polyclonal Antibody



Immunohistochemistry analysis of paraffin-embedded human colon carcinoma tissue, using CDCA3 Antibody. The picture on the right is blocked with the synthesized peptide.

Nanjing BYabscience technology Co.,Ltd



Western blot analysis of lysates from HepG2 cells, using CDCA3 Antibody. The lane on the right is blocked with the synthesized peptide.