



Chk2 Polyclonal Antibody

Catalog No	BYab-16711
Isotype	IgG
Reactivity	Human;Mouse;Rat
Applications	WB;IHC;IF;ELISA
Gene Name	CHEK2
Protein Name	Serine/threonine-protein kinase Chk2
Immunogen	The antiserum was produced against synthesized peptide derived from human CHEK2. AA range:35-84
Specificity	Chk2 Polyclonal Antibody detects endogenous levels of Chk2 protein.
Formulation	Liquid in PBS containing 50% glycerol, 0.5% BSA and 0.02% sodium azide.
Source	Polyclonal, Rabbit,IgG
Purification	The antibody was affinity-purified from rabbit antiserum by affinity-chromatography using epitope-specific immunogen.
Dilution	WB: 1/500 - 1/2000. IHC: 1/100 - 1/300. ELISA: 1/10000.. IF 1:50-200
Concentration	1 mg/ml
Purity	≥90%
Storage Stability	-20°C/1 year
Synonyms	CHEK2; CDS1; CHK2; RAD53; Serine/threonine-protein kinase Chk2; CHK2 checkpoint homolog; Cds1 homolog; Hucds1; hCds1; Checkpoint kinase 2
Observed Band	61kD
Cell Pathway	[Isoform 2]: Nucleus. Isoform 10 is present throughout the cell.; [Isoform 4]: Nucleus.; [Isoform 7]: Nucleus.; [Isoform 9]: Nucleus.; [Isoform 12]: Nucleus.; Nucleus, PML body. Nucleus, nucleoplasm. Recruited into PML bodies together with TP53.
Tissue Specificity	High expression is found in testis, spleen, colon and peripheral blood leukocytes. Low expression is found in other tissues.
Function	catalytic activity:ATP + a protein = ADP + a phosphoprotein.,cofactor:Magnesium.,disease:Defects in CHEK2 are associated with Li-Fraumeni syndrome 2 (LFS2) [MIM:609265]; a highly penetrant familial cancer phenotype usually associated with inherited mutations in p53/TP53.,disease:Defects in CHEK2 are found in some patients with osteosarcoma (OSRC) [MIM:259500]..disease:Defects in CHEK2 are found in some patients with prostate cancer (CaP) [MIM:176807]..enzyme regulation:Rapidly phosphorylated on Thr-68 by MLTK in response to DNA

Nanjing BYabscience technology Co.,Ltd



damage and to replication block. Kinase activity is also up-regulated by autophosphorylation.,function:Regulates cell cycle checkpoints and apoptosis in response to DNA damage, particularly to DNA double-strand breaks. Inhibits CDC25C phosphatase by phosphorylation on 'Ser-216', preventing the entry into mitosis. May also play a role in meiosis. Regulates the TP53

Background

In response to DNA damage and replication blocks, cell cycle progression is halted through the control of critical cell cycle regulators. The protein encoded by this gene is a cell cycle checkpoint regulator and putative tumor suppressor. It contains a forkhead-associated protein interaction domain essential for activation in response to DNA damage and is rapidly phosphorylated in response to replication blocks and DNA damage. When activated, the encoded protein is known to inhibit CDC25C phosphatase, preventing entry into mitosis, and has been shown to stabilize the tumor suppressor protein p53, leading to cell cycle arrest in G1. In addition, this protein interacts with and phosphorylates BRCA1, allowing BRCA1 to restore survival after DNA damage. Mutations in this gene have been linked with Li-Fraumeni syndrome, a highly penetrant familial cancer phenotype usually associated with inherited mutati

matters needing attention

Avoid repeated freezing and thawing!

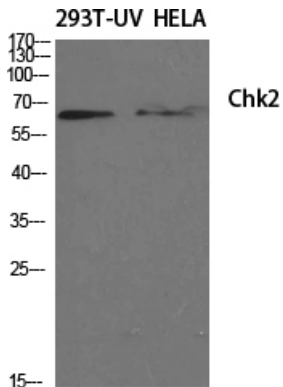
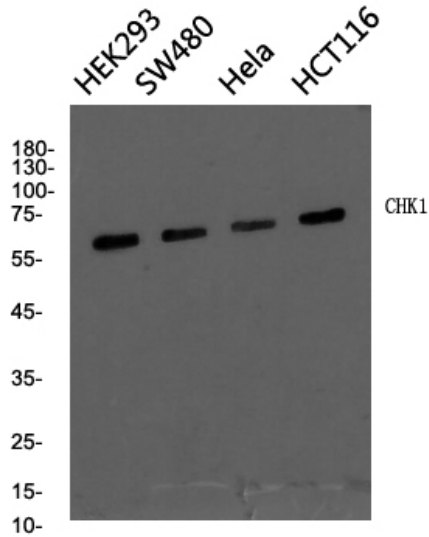
Usage suggestions

This product can be used in immunological reaction related experiments. For more information, please consult technical personnel.

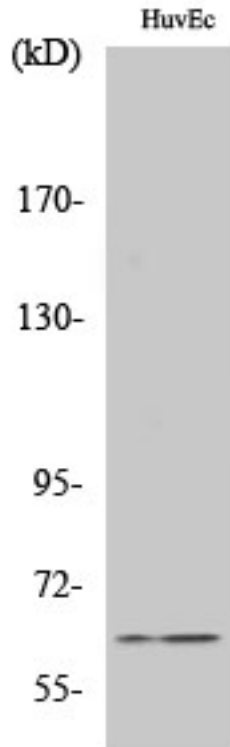


Products Images

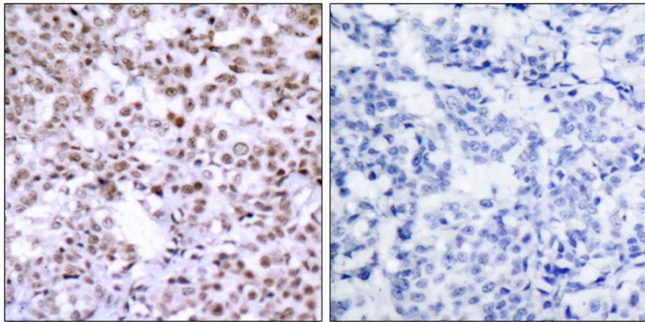
Western blot analysis of Chk2 Polyclonal Antibody, using Hela, HCT116, SW480, HEK293 cell, 4° over night, secondary antibody (cat: RS0002) was diluted at 1:10000, 37° 1 hour.



Western Blot analysis of various cells using Chk2 Polyclonal Antibody diluted at 1:500 cells nucleus extracted by Minute TM Cytoplasmic and Nuclear Fractionation kit (SC-003, Invent biotech, MN, USA).



Western Blot analysis of HuvEc cells using Chk2 Polyclonal Antibody diluted at 1:500 cells nucleus extracted by Minute TM Cytoplasmic and Nuclear Fractionation kit (SC-003, Invent biotech, MN, USA).



Immunohistochemistry analysis of paraffin-embedded human breast carcinoma, using Chk2 Antibody. The picture on the right is blocked with the synthesized peptide.

