



Cks1 Polyclonal Antibody

Catalog No	BYab-16712
Isotype	IgG
Reactivity	Human;Mouse
Applications	WB;IF;ELISA
Gene Name	CKS1B
Protein Name	Cyclin-dependent kinases regulatory subunit 1
Immunogen	The antiserum was produced against synthesized peptide derived from human CKS1. AA range:10-59
Specificity	Cks1 Polyclonal Antibody detects endogenous levels of Cks1 protein.
Formulation	Liquid in PBS containing 50% glycerol, 0.5% BSA and 0.02% sodium azide.
Source	Polyclonal, Rabbit,IgG
Purification	The antibody was affinity-purified from rabbit antiserum by affinity-chromatography using epitope-specific immunogen.
Dilution	Western Blot: 1/500 - 1/2000. Immunofluorescence: 1/200 - 1/1000. ELISA: 1/20000. Not yet tested in other applications.
Concentration	1 mg/ml
Purity	≥90%
Storage Stability	-20°C/1 year
Synonyms	CKS1B; CKS1; PNAS-143; PNAS-16; Cyclin-dependent kinases regulatory subunit 1; CKS-1
Observed Band	9kD
Cell Pathway	cyclin-dependent protein kinase holoenzyme complex,nucleoplasm,SCF ubiquitin ligase complex,
Tissue Specificity	Brain,Muscle,Promyelocytic leukemia,Prostate,Tongue,
Function	function:Binds to the catalytic subunit of the cyclin dependent kinases and is essential for their biological function.,similarity:Belongs to the CKS family.,subunit:Forms a homohexamer that can probably bind six kinase subunits.,
Background	CKS1B protein binds to the catalytic subunit of the cyclin dependent kinases and is essential for their biological function. The CKS1B mRNA is found to be expressed in different patterns through the cell cycle in HeLa cells, which reflects a specialized role for the encoded protein. At least two transcript variants have been identified for this gene, and it appears that only one of them encodes a

Nanjing BYabscience technology Co.,Ltd



protein. [provided by RefSeq, Sep 2008],

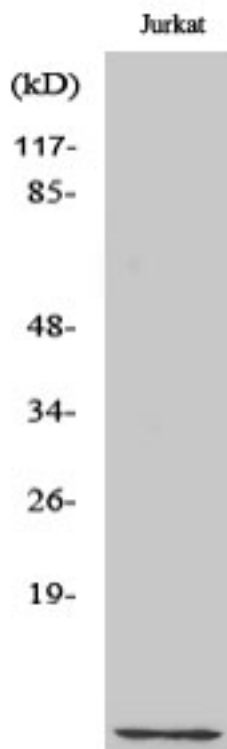
matters needing attention

Avoid repeated freezing and thawing!

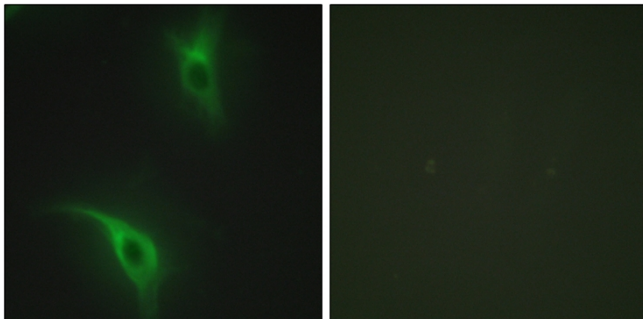
Usage suggestions

This product can be used in immunological reaction related experiments. For more information, please consult technical personnel.

Products Images



Western Blot analysis of various cells using Cks1 Polyclonal Antibody cells nucleus extracted by Minute TM Cytoplasmic and Nuclear Fractionation kit (SC-003, Inventbiotech, MN, USA).



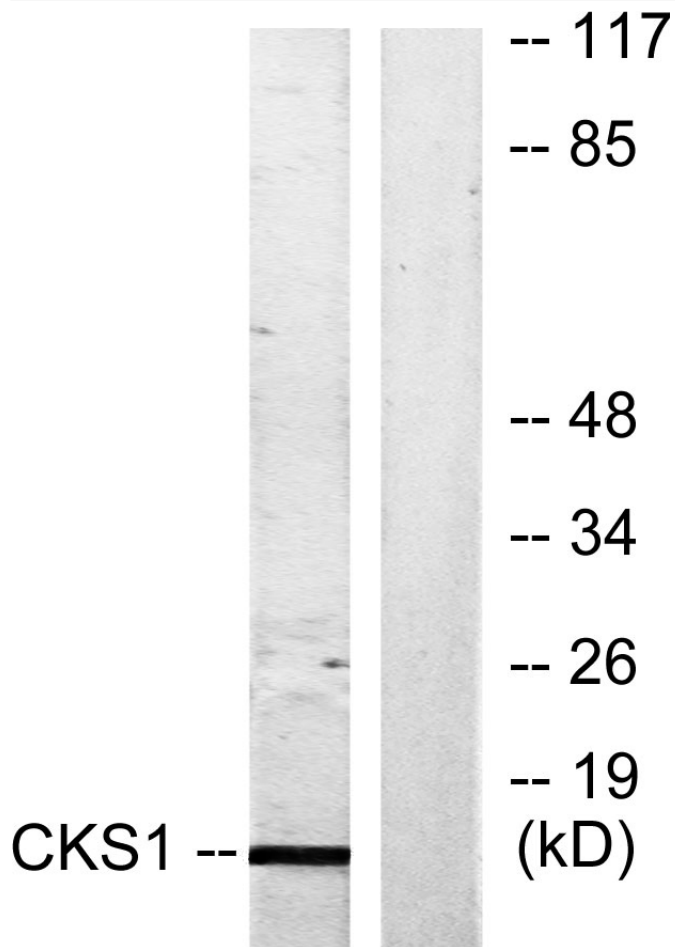
Immunofluorescence analysis of HeLa cells, using CKS1 Antibody. The picture on the right is blocked with the synthesized peptide.

Nanjing BYabscience technology Co.,Ltd

网址: www.njbybio.com

官方热线: 025-5229-8998

监督电话: 15950492658



Western blot analysis of lysates from Jurkat cells, treated with serum 20% 15', using CKS1 Antibody. The lane on the right is blocked with the synthesized peptide.