



CUL-2 Polyclonal Antibody

Catalog No	BYab-16718
Isotype	IgG
Reactivity	Human;Mouse
Applications	WB;IHC;IF;ELISA
Gene Name	CUL2
Protein Name	Cullin-2
Immunogen	The antiserum was produced against synthesized peptide derived from human Cullin 2. AA range:696-745
Specificity	CUL-2 Polyclonal Antibody detects endogenous levels of CUL-2 protein.
Formulation	Liquid in PBS containing 50% glycerol, 0.5% BSA and 0.02% sodium azide.
Source	Polyclonal, Rabbit,IgG
Purification	The antibody was affinity-purified from rabbit antiserum by affinity-chromatography using epitope-specific immunogen.
Dilution	Western Blot: 1/500 - 1/2000. Immunohistochemistry: 1/100 - 1/300. Immunofluorescence: 1/200 - 1/1000. ELISA: 1/20000. Not yet tested in other applications.
Concentration	1 mg/ml
Purity	≥90%
Storage Stability	-20°C/1 year
Synonyms	CUL2; Cullin-2; CUL-2
Observed Band	87kD
Cell Pathway	nucleoplasm,nucleolus,cytosol,VCB complex,cullin-RING ubiquitin ligase complex,Cul2-RING ubiquitin ligase complex,
Tissue Specificity	Brain,Kidney,Skin,
Function	function:Core component of multiple cullin-RING-based ECS (ElonginB/C-CUL2/5-SOCS-box protein) E3 ubiquitin-protein ligase complexes, which mediate the ubiquitination of target proteins. May serve as a rigid scaffold in the complex and may contribute to catalysis through positioning of the substrate and the ubiquitin-conjugating enzyme. The E3 ubiquitin-protein ligase activity of the complex is dependent on the neddylation of the cullin subunit and is inhibited by the association of the deneddylated cullin subunit with TIP120A/CAND1 (By similarity). The functional specificity of the ECS complex depends on the substrate recognition component. ECS(VHL) mediates the ubiquitination of hypoxia-inducible factor (HIF).,pathway:Protein modification; protein

Nanjing BYabs science technology Co.,Ltd



ubiquitination.,PTM:CBC(VHL) complex formation seems to promote neddylation. Deneddylated via its interaction with the COP9 signalosome (CSN)

Background

function:Core component of multiple cullin-RING-based ECS (ElonginB/C-CUL2/5-SOCS-box protein) E3 ubiquitin-protein ligase complexes, which mediate the ubiquitination of target proteins. May serve as a rigid scaffold in the complex and may contribute to catalysis through positioning of the substrate and the ubiquitin-conjugating enzyme. The E3 ubiquitin-protein ligase activity of the complex is dependent on the neddylation of the cullin subunit and is inhibited by the association of the deneddylated cullin subunit with TIP120A/CAND1 (By similarity). The functional specificity of the ECS complex depends on the substrate recognition component. ECS(VHL) mediates the ubiquitination of hypoxia-inducible factor (HIF).,pathway:Protein modification; protein ubiquitination.,PTM:CBC(VHL) complex formation seems to promote neddylation. Deneddylated via its interaction with the COP9 signalosome (CSN) complex.,similarity:Belongs to the cullin family.,subunit:Component of multiple ECS (Elongin BC-CUL2/5-SOCS-box protein) E3 ubiquitin-protein ligase complexes formed of CUL2, Elongin BC (TCEB1 and TCEB2), RBX1 and a variable substrate-specific adapter. Component of the ECS(VHL) or CBC(VHL) complex containing VHL. Component of the ECS(MED8) complex with the probable substrate recognition component MED8 (By similarity). Component of the ECS(PPIL5) complex with the probable substrate recognition component PPIL5. Component of a probable ECS E3 ubiquitin-protein ligase complex containing CUL2, RBX1, TCEB1, TCEB2 and FEM1B. Part of an E3 ubiquitin-protein ligase complex including ZYG11B, CUL2 and Elongin BC. Part of an E3 ubiquitin-protein ligase complex including ZYG11BL, CUL2 and Elongin BC.Interacts with RBX1, RNF7, FEM1B and TIP120A/CAND1. Interacts with COPS2, and MED8 (By similarity). Interacts with human respiratory syncytial virus (HRSV) protein NS1.,

matters needing attention

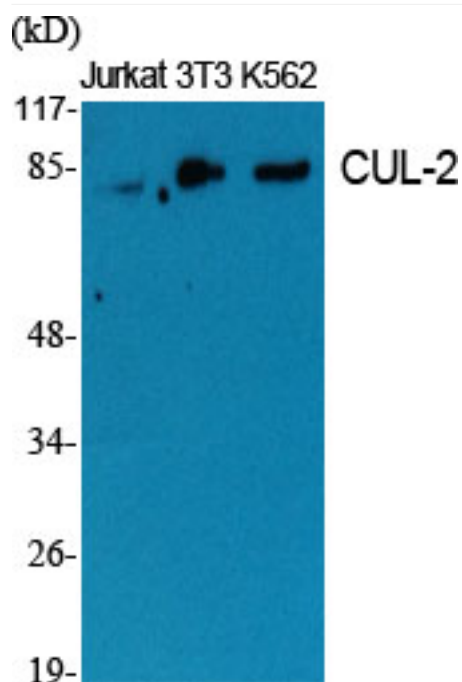
Avoid repeated freezing and thawing!

Usage suggestions

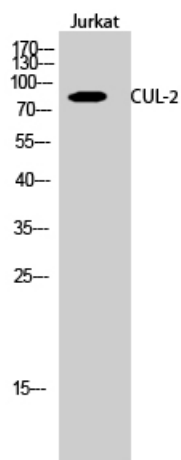
This product can be used in immunological reaction related experiments. For more information, please consult technical personnel.



Products Images

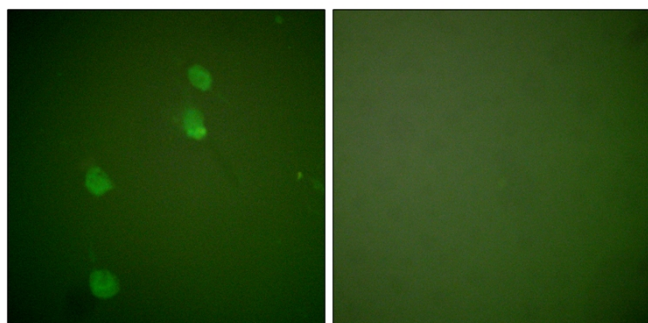


Western Blot analysis of various cells using CUL-2
Polyclonal Antibody diluted at 1:2000



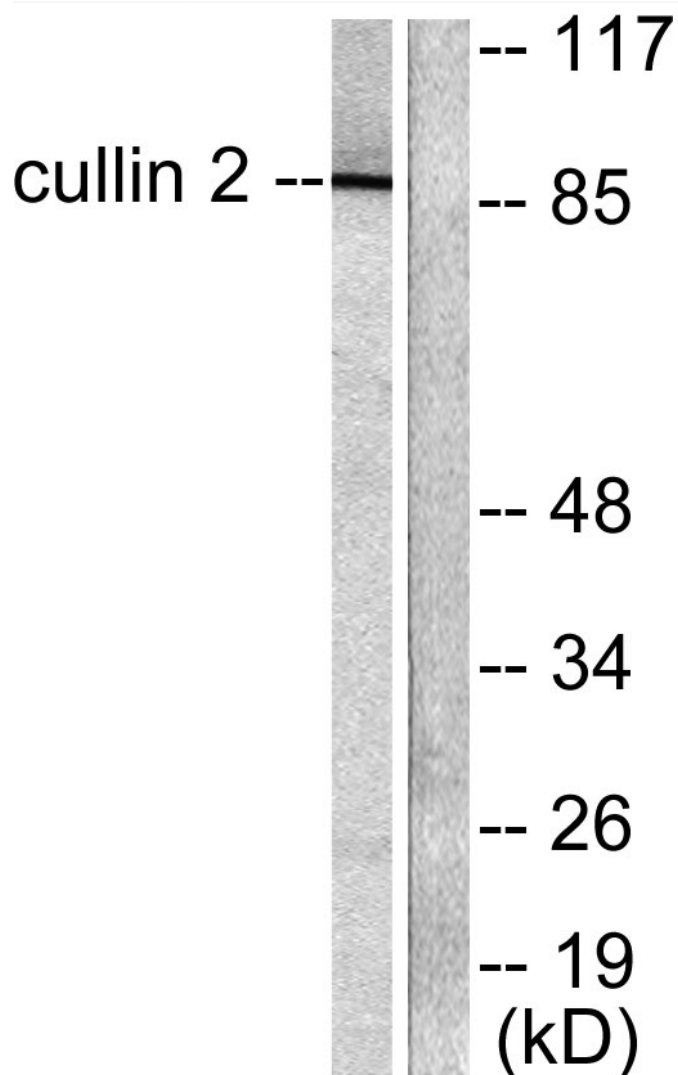
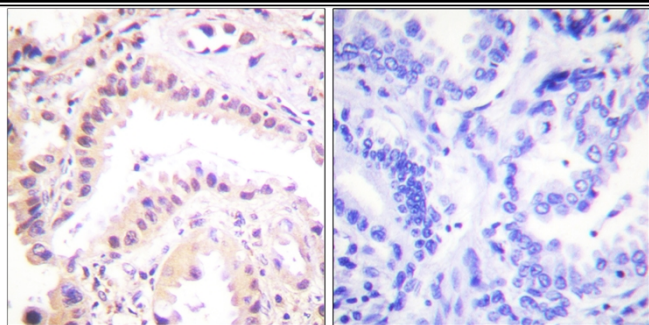
Western Blot analysis of Jurkat cells using CUL-2
Polyclonal Antibody diluted at 1:2000

Immunofluorescence analysis of NIH/3T3 cells, using
Cullin 2 Antibody. The picture on the right is blocked
with the synthesized peptide.



Immunohistochemistry analysis of paraffin-embedded
human lung carcinoma tissue, using Cullin 2 Antibody.
The picture on the right is blocked with the synthesized
peptide.

Nanjing BYabscience technology Co.,Ltd



Western blot analysis of lysates from LOVO cells, using Cullin 2 Antibody. The lane on the right is blocked with the synthesized peptide.