



HMP19 Polyclonal Antibody

Catalog No	BYab-16739
Isotype	IgG
Reactivity	Human;Mouse
Applications	IHC;IF;WB;ELISA
Gene Name	NSG2
Protein Name	Neuron-specific protein family member 2
Immunogen	The antiserum was produced against synthesized peptide derived from human NSG2. AA range:33-82
Specificity	HMP19 Polyclonal Antibody detects endogenous levels of HMP19 protein.
Formulation	Liquid in PBS containing 50% glycerol, 0.5% BSA and 0.02% sodium azide.
Source	Polyclonal, Rabbit,IgG
Purification	The antibody was affinity-purified from rabbit antiserum by affinity-chromatography using epitope-specific immunogen.
Dilution	WB 1:500-2000 IHC: 1/100 - 1/300. ELISA: 1/20000.. IF 1:50-200
Concentration	1 mg/ml
Purity	≥90%
Storage Stability	-20°C/1 year
Synonyms	NSG2; Neuron-specific protein family member 2; Protein p19; Hmp19
Observed Band	19kD
Cell Pathway	Membrane ; Single-pass type II membrane protein . Golgi apparatus, trans-Golgi network membrane . Cell projection, dendrite . Endosome membrane . Early endosome membrane . Late endosome membrane . Lysosome lumen . Cytoplasmic vesicle membrane . Golgi apparatus, Golgi stack membrane . Endosome, multivesicular body membrane . Endocytosed from the cell surface, thus entered into early endosomes, trafficks to late endosomes and degradates in lysosomes (By similarity). Mainly Golgi stack, but also found in small vacuolar organelles and multivesicular bodies. Found in both stationary and motile endosomes (By similarity). .
Tissue Specificity	Brain,Hypothalamus,
Function	similarity:Belongs to the NSG family.,subcellular location:Mainly Golgi stack, but also found in small vacuolar organelles and multivesicular bodies.,

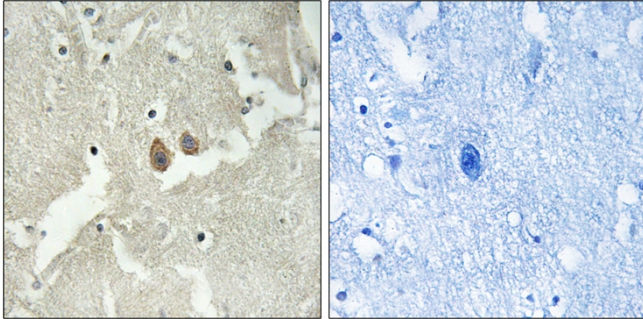
Nanjing BYabscience technology Co.,Ltd



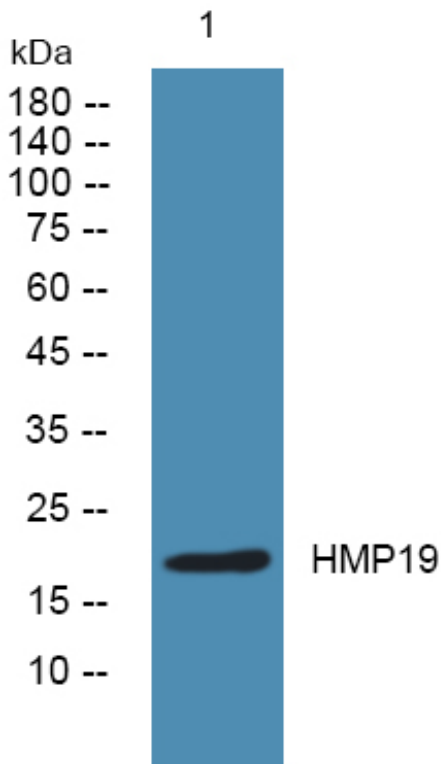
Background	similarity:Belongs to the NSG family.,subcellular location:Mainly Golgi stack, but also found in small vacuolar organelles and multivesicular bodies.,
matters needing attention	Avoid repeated freezing and thawing!
Usage suggestions	This product can be used in immunological reaction related experiments. For more information, please consult technical personnel.



Products Images



Immunohistochemistry analysis of paraffin-embedded human brain tissue, using NSG2 Antibody. The picture on the right is blocked with the synthesized peptide.



Western blot analysis of lysates from DU145 cells, primary antibody was diluted at 1:1000, 4° over night