



RCC2 Polyclonal Antibody

Catalog No	BYab-16770
Isotype	IgG
Reactivity	Human;Mouse
Applications	WB;IHC;IF;ELISA
Gene Name	RCC2
Protein Name	Protein RCC2
Immunogen	The antiserum was produced against synthesized peptide derived from human RCC2. AA range:473-522
Specificity	RCC2 Polyclonal Antibody detects endogenous levels of RCC2 protein.
Formulation	Liquid in PBS containing 50% glycerol, 0.5% BSA and 0.02% sodium azide.
Source	Polyclonal, Rabbit,IgG
Purification	The antibody was affinity-purified from rabbit antiserum by affinity-chromatography using epitope-specific immunogen.
Dilution	WB: 1/500 - 1/2000. IHC: 1/100 - 1/300. ELISA: 1/5000.. IF 1:50-200
Concentration	1 mg/ml
Purity	≥90%
Storage Stability	-20°C/1 year
Synonyms	RCC2; KIAA1470; TD60; Protein RCC2; RCC1-like protein TD-60; Telophase disk protein of 60 kDa
Observed Band	56kD
Cell Pathway	Nucleus, nucleolus . Nucleus . Cytoplasm, cytoskeleton . Chromosome, centromere . Cytoplasm, cytoskeleton, spindle . Chromosome . Midbody . Cell membrane ; Peripheral membrane protein ; Cytoplasmic side . Appears in the nucleus at G2, then concentrates at the inner centromere region of chromosomes during prophase. Redistributes to the midzone of the mitotic spindle during anaphase. Here, the protein covers the entire equatorial diameter from cortex to cortex (PubMed:12919680, PubMed:1939370, PubMed:7559776, PubMed:9914378). Colocalizes with cytoplasmic microtubules in interphase cells (PubMed:23388455). Colocalizes with RAC1 at the cell membrane (PubMed:25074804). .
Tissue Specificity	Brain,Epithelium,Melanoma,Muscle,Natural killer cell,Uterus,
Function	function:Required for completion of mitosis and cytokinesis. May function as a guanine nucleotide exchange factor for the small GTPase

Nanjing BYabscience technology Co.,Ltd



RAC1.,PTM:Phosphorylated upon DNA damage, probably by ATM or ATR.,similarity:Contains 7 RCC1 repeats.,subcellular location:Appears in the nucleus at G2, then concentrates at the inner centromere region of chromosomes during prophase. Redistributes to the midzone of the mitotic spindle during anaphase. Here, the protein covers the entire equatorial diameter from cortex to cortex.,subunit:Binds preferentially to the nucleotide-free form of RAC1. Interacts with microtubules.,

Background

function:Required for completion of mitosis and cytokinesis. May function as a guanine nucleotide exchange factor for the small GTPase
RAC1.,PTM:Phosphorylated upon DNA damage, probably by ATM or ATR.,similarity:Contains 7 RCC1 repeats.,subcellular location:Appears in the nucleus at G2, then concentrates at the inner centromere region of chromosomes during prophase. Redistributes to the midzone of the mitotic spindle during anaphase. Here, the protein covers the entire equatorial diameter from cortex to cortex.,subunit:Binds preferentially to the nucleotide-free form of RAC1. Interacts with microtubules.,

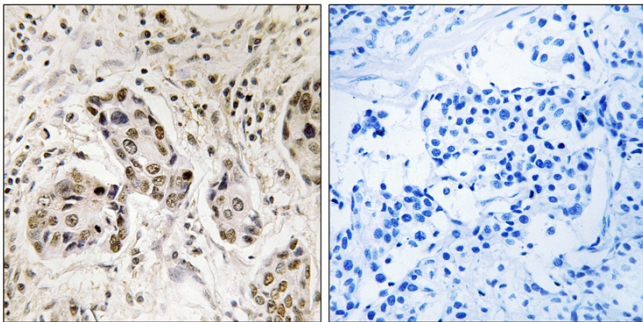
matters needing attention

Avoid repeated freezing and thawing!

Usage suggestions

This product can be used in immunological reaction related experiments. For more information, please consult technical personnel.

Products Images



Immunohistochemistry analysis of paraffin-embedded human breast carcinoma tissue, using RCC2 Antibody. The picture on the right is blocked with the synthesized peptide.

Nanjing BYabscience technology Co.,Ltd

网址: www.njbybio.com

官方热线: 025-5229-8998

监督电话: 15950492658