



Sgo2 Polyclonal Antibody

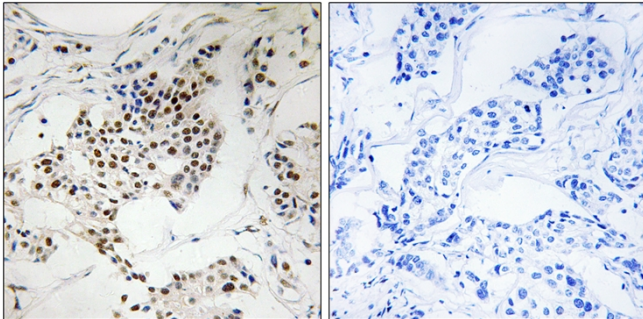
Catalog No	BYab-16777
Isotype	IgG
Reactivity	Human;Rat;Mouse;
Applications	IHC;IF;ELISA
Gene Name	SGOL2
Protein Name	Shugoshin-like 2
Immunogen	The antiserum was produced against synthesized peptide derived from human SGOL2. AA range:681-730
Specificity	Sgo2 Polyclonal Antibody detects endogenous levels of Sgo2 protein.
Formulation	Liquid in PBS containing 50% glycerol, 0.5% BSA and 0.02% sodium azide.
Source	Polyclonal, Rabbit,IgG
Purification	The antibody was affinity-purified from rabbit antiserum by affinity-chromatography using epitope-specific immunogen.
Dilution	IHC: 1/100 - 1/300. ELISA: 1/10000.. IF 1:50-200
Concentration	1 mg/ml
Purity	≥90%
Storage Stability	-20°C/1 year
Synonyms	SGOL2; Shugoshin-like 2; Shugoshin-2; Sgo2; Tripin
Observed Band	
Cell Pathway	Nucleus . Chromosome, centromere . Chromosome, centromere, kinetochore . During meiosis I, accumulates at centromeres during diplotene, and colocalizes differentially with the cohesin subunits RAD21 and REC8 at metaphase I centromeres (By similarity). SGO2 and RAD21 change their relative distributions during telophase I when sister-kinetochore association is lost (By similarity). During meiosis II, it shows a striking tension-dependent redistribution within centromeres throughout chromosome congression during prometaphase II, as it does during mitosis (By similarity). In Hela cells, localizes at centromeres throughout prophase until metaphase and disappears at anaphase (PubMed:17485487). Centromeric localization requires the presence of BUB1 and AUKRB (PubMed:17485487). .
Tissue Specificity	Epithelium,Lymph,Testis,Uterus,
Function	function:During meiosis, protects centromeric cohesion complexes until metaphase II/anaphase II transition, preventing premature release of

Nanjing BYabs science technology Co.,Ltd



	meiosis-specific REC8 cohesin complexes from anaphase I centromeres. Is thus essential for an accurate gametogenesis (By similarity). May act by targeting PPP2CA to centromeres, thus leading to cohesin dephosphorylation.,PTM:Phosphorylated upon DNA damage, probably by ATM or ATR.,sequence caution:Contaminating sequence. Potential poly-A sequence.,similarity:Belongs to the shugoshin family.,subcellular location:In Hela cells, localizes at centromeres throughout prophase until metaphase and disappears at anaphase.,subunit:Directly interacts with PPP2CA.,
Background	function:During meiosis, protects centromeric cohesin complexes until metaphase II/anaphase II transition, preventing premature release of meiosis-specific REC8 cohesin complexes from anaphase I centromeres. Is thus essential for an accurate gametogenesis (By similarity). May act by targeting PPP2CA to centromeres, thus leading to cohesin dephosphorylation.,PTM:Phosphorylated upon DNA damage, probably by ATM or ATR.,sequence caution:Contaminating sequence. Potential poly-A sequence.,similarity:Belongs to the shugoshin family.,subcellular location:In Hela cells, localizes at centromeres throughout prophase until metaphase and disappears at anaphase.,subunit:Directly interacts with PPP2CA.,
matters needing attention	Avoid repeated freezing and thawing!
Usage suggestions	This product can be used in immunological reaction related experiments. For more information, please consult technical personnel.

Products Images



Immunohistochemistry analysis of paraffin-embedded human breast carcinoma, using SGOL2 Antibody. The picture on the right is blocked with the synthesized peptide.