



TPX2 Polyclonal Antibody

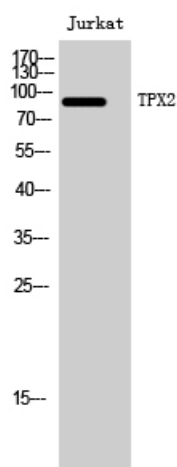
Catalog No	BYab-16782
Isotype	IgG
Reactivity	Human;Mouse
Applications	WB;IHC;IF;ELISA
Gene Name	TPX2
Protein Name	Targeting protein for Xklp2
Immunogen	The antiserum was produced against synthesized peptide derived from human DIL-2. AA range:301-350
Specificity	TPX2 Polyclonal Antibody detects endogenous levels of TPX2 protein.
Formulation	Liquid in PBS containing 50% glycerol, 0.5% BSA and 0.02% sodium azide.
Source	Polyclonal, Rabbit,IgG
Purification	The antibody was affinity-purified from rabbit antiserum by affinity-chromatography using epitope-specific immunogen.
Dilution	WB: 1/500 - 1/2000. IHC: 1/100 - 1/300. ELISA: 1/10000.. IF 1:50-200
Concentration	1 mg/ml
Purity	≥90%
Storage Stability	-20°C/1 year
Synonyms	TPX2; C20orf1; C20orf2; DIL2; HCA519; Targeting protein for Xklp2; Differentially expressed in cancerous and non-cancerous lung cells 2; DIL-2; Hepatocellular carcinoma-associated antigen 519; Protein fls353; Restricted expression prolifera
Observed Band	86kD
Cell Pathway	Nucleus . Cytoplasm, cytoskeleton, spindle . Cytoplasm, cytoskeleton, spindle pole . During mitosis it is strictly associated with the spindle pole and with the mitotic spindle, whereas during S and G2, it is diffusely distributed throughout the nucleus. Is released from the nucleus in apoptotic cells and is detected on apoptotic microtubules. .
Tissue Specificity	Expressed in lung carcinoma cell lines but not in normal lung tissues.
Function	developmental stage:Exclusively expressed in proliferating cells from the transition G1/S until the end of cytokinesis.,PTM:Phosphorylated upon DNA damage, probably by ATM or ATR.,subcellular location:During mitosis it is strictly associated with the spindle pole and with the mitotic spindle, whereas during S and G2, it is diffusely distributed throughout the nucleus.,tissue specificity:Expressed in lung carcinoma cell lines but not in normal lung tissues.,

Nanjing BYabscience technology Co.,Ltd

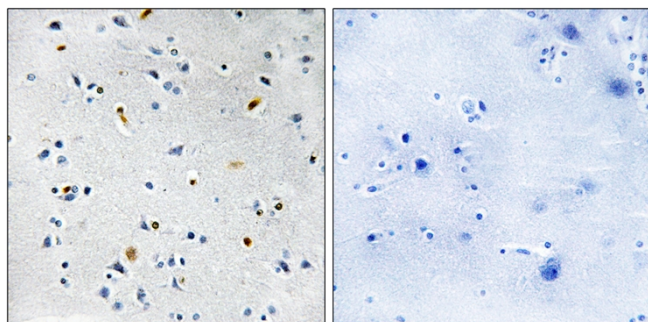


Background	developmental stage: Exclusively expressed in proliferating cells from the transition G1/S until the end of cytokinesis., PTM: Phosphorylated upon DNA damage, probably by ATM or ATR., subcellular location: During mitosis it is strictly associated with the spindle pole and with the mitotic spindle, whereas during S and G2, it is diffusely distributed throughout the nucleus., tissue specificity: Expressed in lung carcinoma cell lines but not in normal lung tissues.,
matters needing attention	Avoid repeated freezing and thawing!
Usage suggestions	This product can be used in immunological reaction related experiments. For more information, please consult technical personnel.

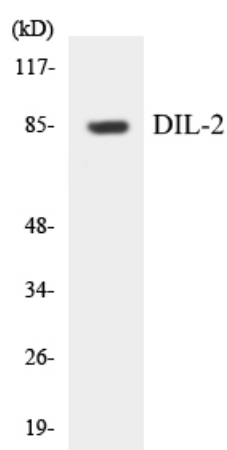
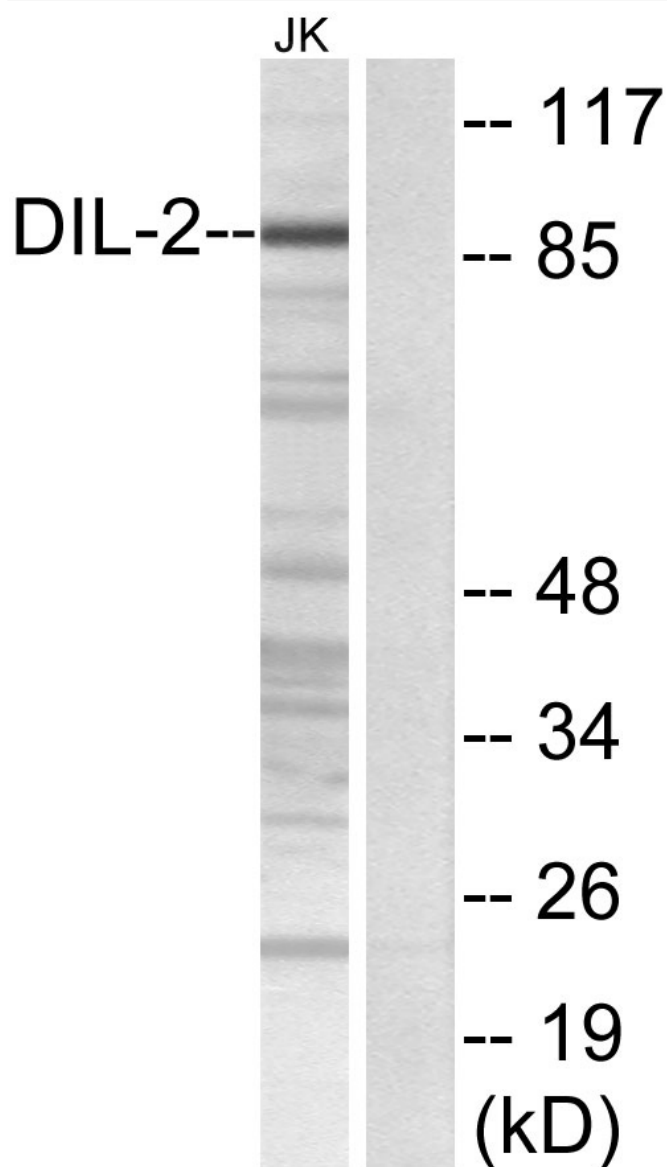
Products Images

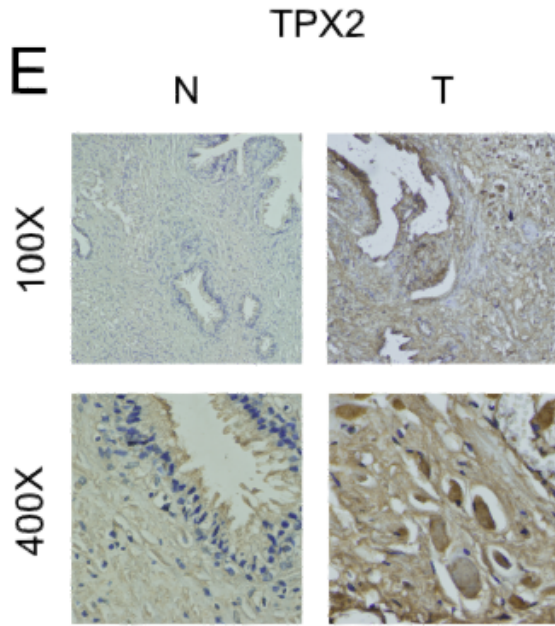


Western Blot analysis of Jurkat cells using TPX2 Polyclonal Antibody. Secondary antibody (catalog#: RS0002) was diluted at 1:20000. Cells nucleus extracted by Minute TM Cytoplasmic and Nuclear Fractionation kit (SC-003, Invent biotech, MN, USA).



Immunohistochemistry analysis of paraffin-embedded human brain tissue, using DIL-2 Antibody. The picture on the right is blocked with the synthesized peptide.





A Liquid–Liquid Phase Separation-Related Index Associate with Biochemical Recurrence and Tumor Immune Environment of Prostate Cancer Patients INTERNATIONAL JOURNAL OF MOLECULAR SCIENCES Qi You, Jia-Yin Chen, Xiao-Hui Wu, Yu-Ting Xue, Jiang-Bo Sun, Yong Wei, Qing-Shui Zheng, Xue-Yi Xue, Dong-Ning Chen, Ning Xu IHC Human benign prostatic hyperplasia (BPH) tissue prostate cancer (PCa) cell