



Cleaved-Integrin α V HC (K889) Polyclonal Antibody

| | |
|---------------------------|---|
| Catalog No | BYab-16808 |
| Isotype | IgG |
| Reactivity | Human;Rat;Mouse; |
| Applications | WB;ELISA |
| Gene Name | ITGAV |
| Protein Name | Integrin alpha-V |
| Immunogen | The antiserum was produced against synthesized peptide derived from human ITGAV. AA range:840-889 |
| Specificity | Cleaved-Integrin α V HC (K889) Polyclonal Antibody detects endogenous levels of fragment of activated Integrin α V HC protein resulting from cleavage adjacent to K889. |
| Formulation | Liquid in PBS containing 50% glycerol, 0.5% BSA and 0.02% sodium azide. |
| Source | Polyclonal, Rabbit,IgG |
| Purification | The antibody was affinity-purified from rabbit antiserum by affinity-chromatography using epitope-specific immunogen. |
| Dilution | Western Blot: 1/500 - 1/2000. ELISA: 1/10000. Not yet tested in other applications. |
| Concentration | 1 mg/ml |
| Purity | $\geq 90\%$ |
| Storage Stability | $-20^{\circ}\text{C}/1$ year |
| Synonyms | ITGAV; MSK8; VNRA; Integrin alpha-V; Vitronectin receptor subunit alpha; CD antigen CD51 |
| Observed Band | 95kD |
| Cell Pathway | Cell membrane; Single-pass type I membrane protein. Cell junction, focal adhesion . |
| Tissue Specificity | Aortic endothelium,Liver,Pooled,Testis, |
| Function | function:The alpha-V integrins are receptors for vitronectin, cytotactin, fibronectin, fibrinogen, laminin, matrix metalloproteinase-2, osteopontin, osteomodulin, prothrombin, thrombospondin and vWF. They recognize the sequence R-G-D in a wide array of ligands. In case of HIV-1 infection, the interaction with extracellular viral Tat protein seems to enhance angiogenesis in Kaposi's sarcoma lesions.,similarity:Belongs to the integrin alpha chain family.,similarity:Contains 7 FG-GAP repeats.,subunit:Heterodimer of an alpha and a beta subunit. The alpha subunit is composed of an heavy and a light chain linked by a disulfide bond. Alpha-V associates with either beta-1, beta-3, beta-5, beta-6 or beta-8 subunit. |

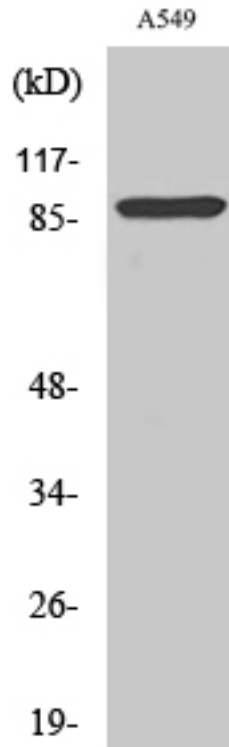
Nanjing BYabs science technology Co.,Ltd



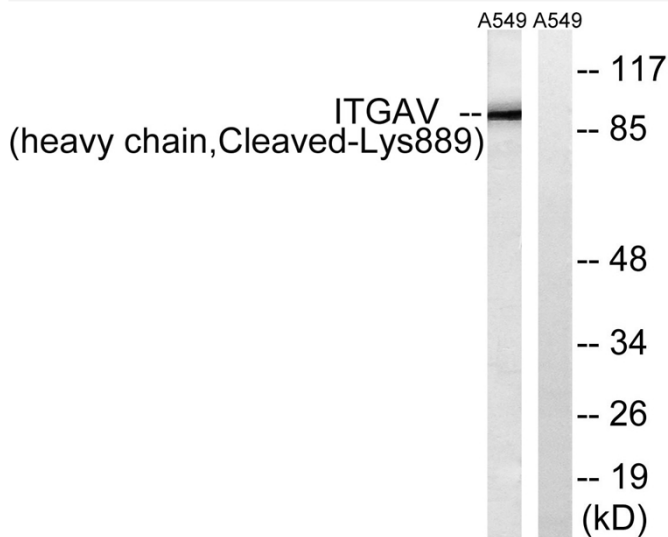
| | |
|---------------------------|---|
| | Interacts with HIV-1 Tat. Alpha-V/beta-6 binds to foot-and-mouth disease virus (FMDV) VP1 protein and acts as a receptor for this virus (By similarity). Alpha-V/beta-6 binds to coxsack |
| Background | integrin subunit alpha V(ITGAV) Homo sapiens The product of this gene belongs to the integrin alpha chain family. Integrins are heterodimeric integral membrane proteins composed of an alpha subunit and a beta subunit that function in cell surface adhesion and signaling. The encoded preproprotein is proteolytically processed to generate light and heavy chains that comprise the alpha V subunit. This subunit associates with beta 1, beta 3, beta 5, beta 6 and beta 8 subunits. The heterodimer consisting of alpha V and beta 3 subunits is also known as the vitronectin receptor. This integrin may regulate angiogenesis and cancer progression. Alternative splicing results in multiple transcript variants. Note that the integrin alpha 5 and integrin alpha V subunits are encoded by distinct genes. [provided by RefSeq, Oct 2015], |
| matters needing attention | Avoid repeated freezing and thawing! |
| Usage suggestions | This product can be used in immunological reaction related experiments. For more information, please consult technical personnel. |



Products Images



Western Blot analysis of various cells using
Cleaved-Integrin α V HC (K889) Polyclonal Antibody



Western blot analysis of lysates from A549 cells,
treated with etoposide 25uM 1h, using ITGAV (heavy
chain, Cleaved-Lys889) Antibody. The lane on the right
is blocked with the synthesized peptide.

Nanjing BYabscience technology Co.,Ltd

网址: www.njbybio.com

官方热线: 025-5229-8998

监督电话: 15950492658