



Claudin 2 mouse mAb(PT0311)

Catalog No	BYab-16871
Isotype	IgG
Reactivity	Human
Applications	IHC;IF;WB
Gene Name	CLDN2 PSEC0059 SP82 UNQ705/PRO1356
Protein Name	Claudin 2
Immunogen	Synthesized peptide derived from human Claudin 2
Specificity	This antibody detects endogenous levels of human Claudin 2
Formulation	Liquid in PBS containing 50% glycerol, 0.5% BSA and 0.02% sodium azide.
Source	Mouse, Monoclonal/IgG2b, Kappa
Purification	The antibody was affinity-purified from mouse ascites by affinity-chromatography using specific immunogen.
Dilution	IHC-p 1:100-300, WB 1:500-2000. IF 1:50-200
Concentration	1 mg/ml
Purity	≥90%
Storage Stability	-20°C/1 year
Synonyms	Claudin-2 (SP82)
Observed Band	
Cell Pathway	Cell junction, tight junction . Cell membrane ; Multi-pass membrane protein .
Tissue Specificity	Colon,Colon epithelium,Kidney,Skin,Teratocarcinoma,Thalamus,
Function	function:Plays a major role in tight junction-specific obliteration of the intercellular space, through calcium-independent cell-adhesion activity.,similarity:Belongs to the claudin family.,subunit:Can form homo- and heteropolymers with other CLDN. Homopolymers interact with CLDN3, but not CLDN1, homopolymers. Directly interacts with TJP1/ZO-1, TJP2/ZO-2 and TJP3/ZO-3.,
Background	This gene product belongs to the claudin protein family whose members have been identified as major integral membrane proteins localized exclusively at tight junctions. Claudins are expressed in an organ-specific manner and regulate tissue-specific physiologic properties of tight junctions. This protein is expressed in the intestine. Alternatively spliced transcript variants with different 5' untranslated region have been found for this gene.[provided by RefSeq, Jan

Nanjing BYabscience technology Co.,Ltd



2010],

matters needing attention

Avoid repeated freezing and thawing!

Usage suggestions

This product can be used in immunological reaction related experiments. For more information, please consult technical personnel.

Nanjing BYabscience technology Co.,Ltd

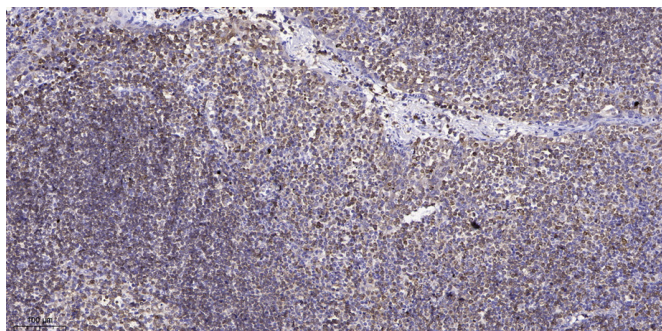
网址: www.njbybio.com

官方热线: 025-5229-8998

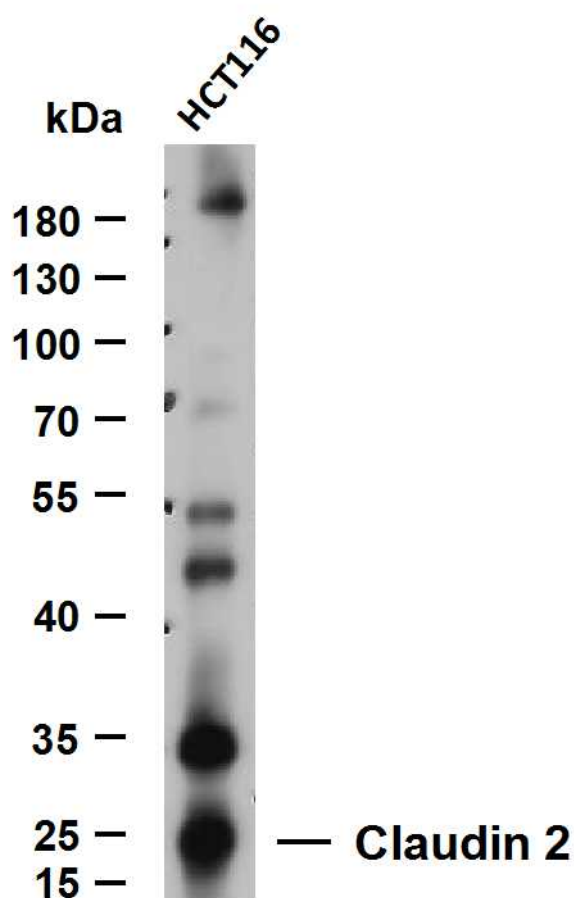
监督电话: 15950492658



Products Images



Immunohistochemical analysis of paraffin-embedded human tonsil. 1, Antibody was diluted at 1:200(4° overnight). 2, Tris-EDTA,pH9.0 was used for antigen retrieval. 3,Secondary antibody was diluted at 1:200(room temperature, 45min).



Whole cell lysates were separated by 10% SDS-PAGE, and the membrane was blotted with anti-Claudin 2 (PT0311) antibody. The HRP-conjugated Goat anti-Mouse IgG(H + L) antibody was used to detect the antibody. Lane 1: HCT116 Predicted band size: 29kDa Observed band size: 50kDa