



# CD31 (phospho Tyr713) Polyclonal Antibody

|                           |  |
|---------------------------|--|
| <b>Catalog No</b>         | BYab-16897   |
| <b>Isotype</b>            | IgG  |
| <b>Reactivity</b>         | Human;Mouse  |
| <b>Applications</b>       | WB;IHC;IF;ELISA  |
| <b>Gene Name</b>          | PECAM1   |
| <b>Protein Name</b>       | Platelet endothelial cell adhesion molecule  |
| <b>Immunogen</b>          | The antiserum was produced against synthesized peptide derived from human PECAM-1 around the phosphorylation site of Tyr713. AA range:686-735  |
| <b>Specificity</b>        | Phospho-CD31 (Y713) Polyclonal Antibody detects endogenous levels of CD31 protein only when phosphorylated at Y713.  |
| <b>Formulation</b>        | Liquid in PBS containing 50% glycerol, 0.5% BSA and 0.02% sodium azide.  |
| <b>Source</b>             | Polyclonal, Rabbit,IgG   |
| <b>Purification</b>       | The antibody was affinity-purified from rabbit antiserum by affinity-chromatography using epitope-specific immunogen.  |
| <b>Dilution</b>           | Western Blot: 1/500 - 1/2000. Immunohistochemistry: 1/100 - 1/300. Immunofluorescence: 1/200 - 1/1000. ELISA: 1/20000. Not yet tested in other applications.   |
| <b>Concentration</b>      | 1 mg/ml  |
| <b>Purity</b>             | ≥90%   |
| <b>Storage Stability</b>  | -20°C/1 year   |
| <b>Synonyms</b>           | PECAM1; Platelet endothelial cell adhesion molecule; PECAM-1; EndoCAM; GPIIA'; PECA1; CD antigen CD31  |
| <b>Observed Band</b>      | 150kD  |
| <b>Cell Pathway</b>       | Cell membrane ; Single-pass type I membrane protein . Cell surface expression on neutrophils is down-regulated upon fMLP or CXCL8/IL8-mediated stimulation. .; [Isoform Long]: Cell membrane ; Single-pass type I membrane protein . Membrane raft . Cell junction . Localizes to the lateral border recycling compartment (LBRC) and recycles from the LBRC to the junction in resting endothelial cells. .; [Isoform Delta15]: Cell junction . Localizes to the lateral border recycling compartment (LBRC) and recycles from the LBRC to the junction in resting endothelial cells. |
| <b>Tissue Specificity</b> | Expressed on platelets and leukocytes and is primarily concentrated at the borders between endothelial cells (PubMed:18388311, PubMed:21464369). Expressed in human umbilical vein endothelial cells (HUVECs) (at protein level) (PubMed:19342684, PubMed:17580308). Expressed on neutrophils (at protein level) (PubMed:17580308). Isoform Long predominates in all tissues examined  |

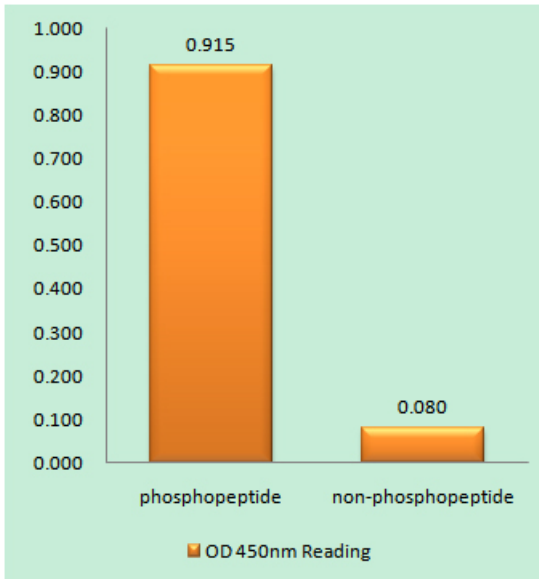
**Nanjing BYabscience technology Co.,Ltd**



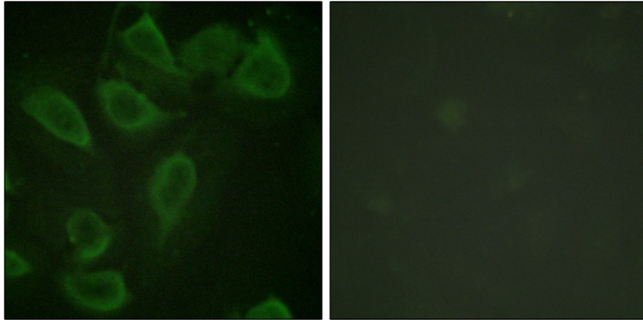
|                           |  |
|---------------------------|--|
|                           | (PubMed:12433657). Isoform Delta12 is detected only in trachea (PubMed:12433657). Isoform Delta14-15 is only detected in lung (PubMed:12433657). Isoform Delta14 is detected in all tissues examined with the strongest expression in heart (PubMed:12433657). Isoform Delta15 is expressed in brain, testis, ovary, cell surface of platelets, human umbilical vein endothelial cells (HUVECs), Jurkat T-cell leukemia, human erythroleuk   |
| Function                  | function:This protein is a cell adhesion molecule expressed on platelets and at endothelial cell intercellular junctions.,online information:CD31 entry,online information:PECAM-1,online information:The Singapore human mutation and polymorphism database,PTM:Phosphorylated on Ser and Tyr residues after cellular activation.,similarity:Contains 6 Ig-like C2-type (immunoglobulin-like) domains.,tissue specificity:Long isoform predominates all tissues examined, isoform Delta12 was detected only in trachea and isoform Delta14-15 only in lung, isoform Delta14 was detected in all tissues examined with the strongest expression in heart., |
| Background                | The protein encoded by this gene is found on the surface of platelets, monocytes, neutrophils, and some types of T-cells, and makes up a large portion of endothelial cell intercellular junctions. The encoded protein is a member of the immunoglobulin superfamily and is likely involved in leukocyte migration, angiogenesis, and integrin activation. [provided by RefSeq, May 2010],  |
| matters needing attention | Avoid repeated freezing and thawing!   |
| Usage suggestions         | This product can be used in immunological reaction related experiments. For more information, please consult technical personnel.  |



## Products Images



Enzyme-Linked Immunosorbent Assay  
(Phospho-ELISA) for Immunogen Phosphopeptide  
(Phospho-left) and Non-Phosphopeptide  
(Phospho-right), using PECAM-1 (Phospho-Tyr713)  
Antibody



Immunofluorescence analysis of HeLa cells, using  
PECAM-1 (Phospho-Tyr713) Antibody. The picture on  
the right is blocked with the phosphopeptide.

Nanjing BYabscience technology Co.,Ltd

网址: [www.njbybio.com](http://www.njbybio.com)

官方热线: 025-5229-8998

监督电话: 15950492658



HepG2 HepG2

Western blot analysis of lysates from HepG2 cells, using PECAM-1 (Phospho-Tyr713) Antibody. The lane on the right is blocked with the phospho peptide.

PECAM-1 --  
(pTyr713)



-- 170

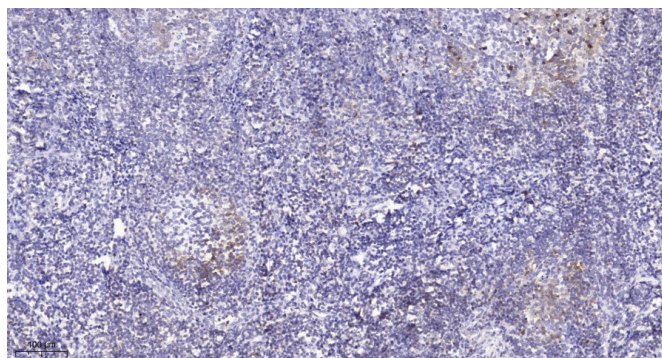
-- 130

-- 95

-- 72

-- 55

(KD)



Immunohistochemical analysis of paraffin-embedded human tonsil. 1, Tris-EDTA, pH9.0 was used for antigen retrieval. 2 Antibody was diluted at 1:200(4° overnight). 3, Secondary antibody was diluted at 1:200(room temperature, 45min).

Nanjing BYabs science technology Co.,Ltd

网址: [www.njbybio.com](http://www.njbybio.com)

官方热线: 025-5229-8998

监督电话: 15950492658