



# COL11A1 Polyclonal Antibody

<b>Catalog No</b>	BYab-16967
<b>Isotype</b>	IgG
<b>Reactivity</b>	Human;Mouse
<b>Applications</b>	WB;IHC;IF;ELISA
<b>Gene Name</b>	COL11A1
<b>Protein Name</b>	Collagen alpha-1(XI) chain
<b>Immunogen</b>	The antiserum was produced against synthesized peptide derived from human Collagen XI alpha1. AA range:581-630
<b>Specificity</b>	COL11A1 Polyclonal Antibody detects endogenous levels of COL11A1 protein.
<b>Formulation</b>	Liquid in PBS containing 50% glycerol, 0.5% BSA and 0.02% sodium azide.
<b>Source</b>	Polyclonal, Rabbit,IgG
<b>Purification</b>	The antibody was affinity-purified from rabbit antiserum by affinity-chromatography using epitope-specific immunogen.
<b>Dilution</b>	Western Blot: 1/500 - 1/2000. IHC-p: 1:100-300 ELISA: 1/20000. IF 1:100-300 Not yet tested in other applications.
<b>Concentration</b>	1 mg/ml
<b>Purity</b>	≥90%
<b>Storage Stability</b>	-20°C/1 year
<b>Synonyms</b>	COL11A1; COLL6; Collagen alpha-1(XI) chain
<b>Observed Band</b>	181kD
<b>Cell Pathway</b>	Secreted, extracellular space, extracellular matrix .
<b>Tissue Specificity</b>	Cartilage, placenta and some tumor or virally transformed cell lines. Isoforms using exon IIA or IIB are found in the cartilage while isoforms using only exon IIB are found in the tendon.
<b>Function</b>	alternative products:Additional isoforms seem to exist. There is alternative usage of exon IIA or exon IIB. Transcripts containing exon IIA or IIB are present in cartilage, but exon IIB is preferentially utilized in transcripts from tendon,disease:Defects in COL11A1 are the cause of Marshall syndrome [MIM:154780]. It is an autosomal dominant disorder with ocular, orofacial, auditory and skeletal manifestations. It shares several features with Stickler syndrome, such as midfacial hypoplasia, high myopia, and sensorineural-hearing deficit.,disease:Defects in COL11A1 are the cause of Stickler syndrome type 2 (STL2) [MIM:604841]; also known as Stickler syndrome vitreous type 2. STL2 is an autosomal dominant form of Stickler syndrome, an inherited disorder that

**Nanjing BYabscience technology Co.,Ltd**



associates ocular signs with more or less complete forms of Pierre Robin sequence, bone disorders and sensorineural deafness. Ocular

## Background

collagen type XI alpha 1 chain(COL11A1) Homo sapiens This gene encodes one of the two alpha chains of type XI collagen, a minor fibrillar collagen. Type XI collagen is a heterotrimer but the third alpha chain is a post-translationally modified alpha 1 type II chain. Mutations in this gene are associated with type II Stickler syndrome and with Marshall syndrome. A single-nucleotide polymorphism in this gene is also associated with susceptibility to lumbar disc herniation. Multiple transcript variants have been identified for this gene. [provided by RefSeq, Nov 2009],

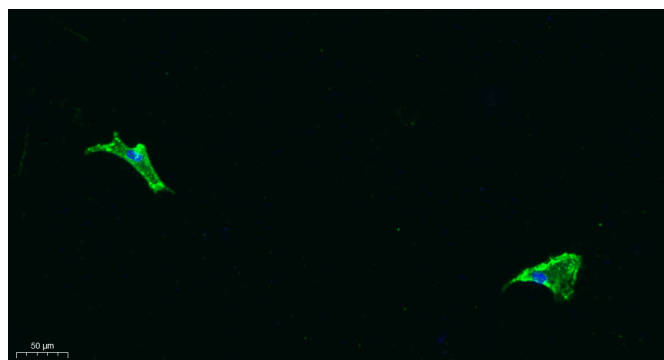
## matters needing attention

Avoid repeated freezing and thawing!

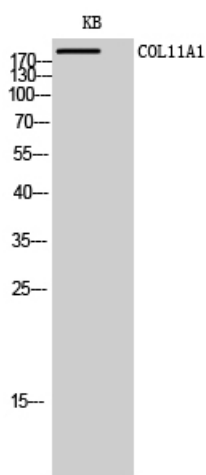
## Usage suggestions

This product can be used in immunological reaction related experiments. For more information, please consult technical personnel.

## Products Images



Immunofluorescence analysis of A549. 1,primary Antibody was diluted at 1:200(4°C overnight). 2, Goat Anti Rabbit IgG (H&L) - Alexa Fluor 488 Secondary antibody was diluted at 1:1000(room temperature, 50min).3, Picture B: DAPI(blue) 10min.



Western Blot analysis of KB cells using COL11A1 Polyclonal Antibody diluted at 1:1000

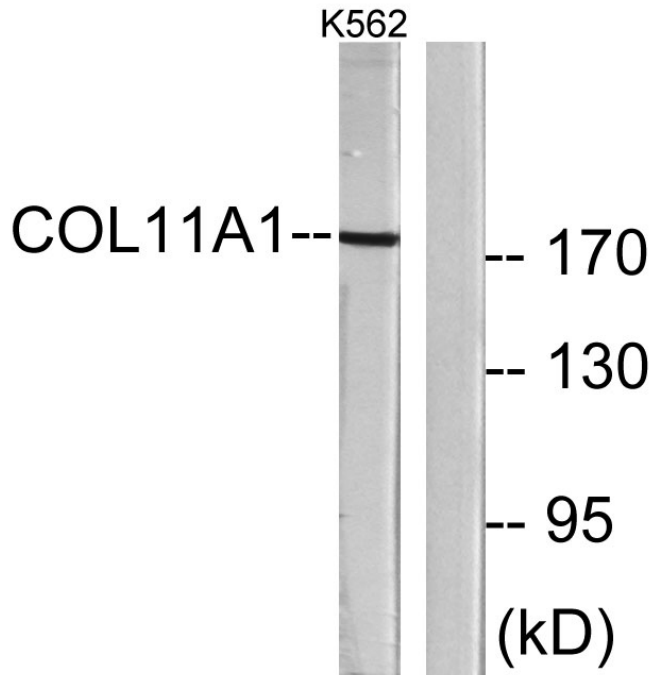
Western blot analysis of lysates from K562 cells, using Collagen XI alpha1 Antibody. The lane on the right is blocked with the synthesized peptide.

**Nanjing BYabs science technology Co.,Ltd**

网址: [www.njbybio.com](http://www.njbybio.com)

官方热线: 025-5229-8998

监督电话: 15950492658



Immunohistochemical analysis of paraffin-embedded human tonsil. 1, Antibody was diluted at 1:200(4° overnight). 2, Tris-EDTA,pH9.0 was used for antigen retrieval. 3,Secondary antibody was diluted at 1:200(room temperature, 30min).

