



COL16A1 Polyclonal Antibody

Catalog No	BYab-16972
Isotype	IgG
Reactivity	Human;Mouse
Applications	IHC;IF;ELISA
Gene Name	COL16A1
Protein Name	Collagen alpha-1(XVI) chain
Immunogen	The antiserum was produced against synthesized peptide derived from human Collagen XVI alpha1. AA range:1121-1170
Specificity	COL16A1 Polyclonal Antibody detects endogenous levels of COL16A1 protein.
Formulation	Liquid in PBS containing 50% glycerol, 0.5% BSA and 0.02% sodium azide.
Source	Polyclonal, Rabbit,IgG
Purification	The antibody was affinity-purified from rabbit antiserum by affinity-chromatography using epitope-specific immunogen.
Dilution	IHC: 1/100 - 1/300. ELISA: 1/5000.. IF 1:50-200
Concentration	1 mg/ml
Purity	≥90%
Storage Stability	-20°C/1 year
Synonyms	COL16A1; FP1572; Collagen alpha-1(XVI) chain
Observed Band	
Cell Pathway	Secreted, extracellular space, extracellular matrix .
Tissue Specificity	In papillary dermis, is a component of specialized fibrillin-1-containing microfibrils, whereas in territorial cartilage matrix, it is localized to a discrete population of thin, weakly banded collagen fibrils in association with other collagens (at protein level). In the placenta, where it is found in the amnion, a membranous tissue lining the amniotic cavity. Within the amnion, it is found in an acellular, relatively dense layer of a complex network of reticular fibers. Also located to a fibroblast layer beneath this dense layer. Exists in tissues in association with other types of collagen.
Function	developmental stage:Transiently elevated expression during gestation, and decrease at term.,domain:This sequence defines eighteen different domains, nine triple-helical domains (COL9 to COL1) and ten non-triple-helical domains (NC10 to NC1). The numerous interruptions in the triple helix may make this molecule either elastic or flexible.,function:Involved in mediating cell attachment and

Nanjing BYabscience technology Co.,Ltd



inducing integrin-mediated cellular reactions, such as cell spreading and alterations in cell morphology.,PTM:Glycosylated.,PTM:Prolines at the third position of the tripeptide repeating unit (G-X-Y) are hydroxylated in some or all of the chains.,similarity:Belongs to the fibril-associated collagens with interrupted helices (FACIT) family.,similarity:Contains 1 TSP N-terminal (TSPN) domain.,subunit:Homotrimer. Interacts with FBN1, fibronectin and integrins ITGA1/ITGB1 and ITGA2/ITGB1. Integrin ITGA1/ITGB

Background

This gene encodes the alpha chain of type XVI collagen, a member of the FACIT collagen family (fibril-associated collagens with interrupted helices). Members of this collagen family are found in association with fibril-forming collagens such as type I and II, and serve to maintain the integrity of the extracellular matrix. High levels of type XVI collagen have been found in fibroblasts and keratinocytes, and in smooth muscle and amnion. [provided by RefSeq, Jul 2008],

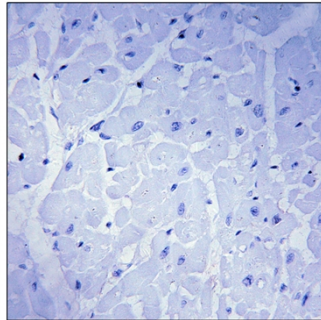
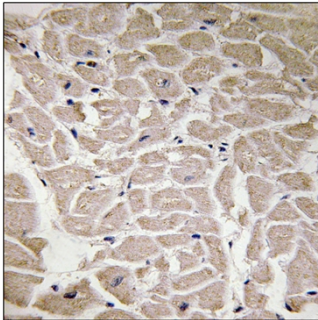
matters needing attention

Avoid repeated freezing and thawing!

Usage suggestions

This product can be used in immunological reaction related experiments. For more information, please consult technical personnel.

Products Images



Immunohistochemistry analysis of paraffin-embedded human heart tissue, using Collagen XVI alpha1 Antibody. The picture on the right is blocked with the synthesized peptide.