



COL25A1 Polyclonal Antibody

Catalog No	BYab-16980
Isotype	IgG
Reactivity	Human;Mouse
Applications	WB;IHC;IF;ELISA
Gene Name	COL25A1
Protein Name	Collagen alpha-1(XXV) chain
Immunogen	The antiserum was produced against synthesized peptide derived from human Collagen XXV alpha1. AA range:101-150
Specificity	COL25A1 Polyclonal Antibody detects endogenous levels of COL25A1 protein.
Formulation	Liquid in PBS containing 50% glycerol, 0.5% BSA and 0.02% sodium azide.
Source	Polyclonal, Rabbit,IgG
Purification	The antibody was affinity-purified from rabbit antiserum by affinity-chromatography using epitope-specific immunogen.
Dilution	Western Blot: 1/500 - 1/2000. Immunohistochemistry: 1/100 - 1/300. Immunofluorescence: 1/200 - 1/1000. ELISA: 1/20000. Not yet tested in other applications.
Concentration	1 mg/ml
Purity	≥90%
Storage Stability	-20°C/1 year
Synonyms	COL25A1; Collagen alpha-1(XXV) chain; Alzheimer disease amyloid-associated protein; AMY; CLAC-P
Observed Band	64kD
Cell Pathway	Membrane ; Single-pass type II membrane protein . After proteolytic cleavage, CLAC is secreted.
Tissue Specificity	Expressed predominantly in brain. Deposited preferentially in primitive or neuritic amyloid plaques which are typical of Alzheimer disease.
Function	caution:The pyrrolidone carboxylic acid reported in PubMed:11927537 probably formed artifactually from Glu-113 during the extraction procedure in 70% formic acid. In PubMed:15522881, the protein was found to have unblocked Glu at the N-terminus.,function:Inhibits fibrillization of beta amyloid peptide during the elongation phase. Has also been shown to assemble amyloid fibrils into protease-resistant aggregates. Binds heparin.,PTM:Glycosylated.,PTM:Hydroxylated on 11% of proline residues and 49% of lysine residues.,PTM:Undergoes proteolytic cleavage by furin protease to yield the soluble collagen-like Alzheimer amyloid plaque

Nanjing BYabscience technology Co.,Ltd



component.,similarity:Contains 7 collagen-like domains.,subcellular location:After proteolytic cleavage, CLAC is secreted.,subunit:Forms homodimers and homotrimers. Binds to the fibrillized forms of beta amyloid peptide 40 (beta-APP40) and beta amyloid peptide 42 (b

Background

This gene encodes a brain-specific membrane associated collagen. A product of proteolytic processing of the encoded protein, CLAC (collagenous Alzheimer amyloid plaque component), binds to amyloid beta-peptides found in Alzheimer amyloid plaques but CLAC inhibits rather than facilitates amyloid fibril elongation (PMID: 16300410). A study of over-expression of this collagen in mice, however, found changes in pathology and behavior suggesting that the encoded protein may promote amyloid plaque formation (PMID: 19548013). Multiple transcript variants encoding different isoforms have been found for this gene. [provided by RefSeq, Dec 2011],

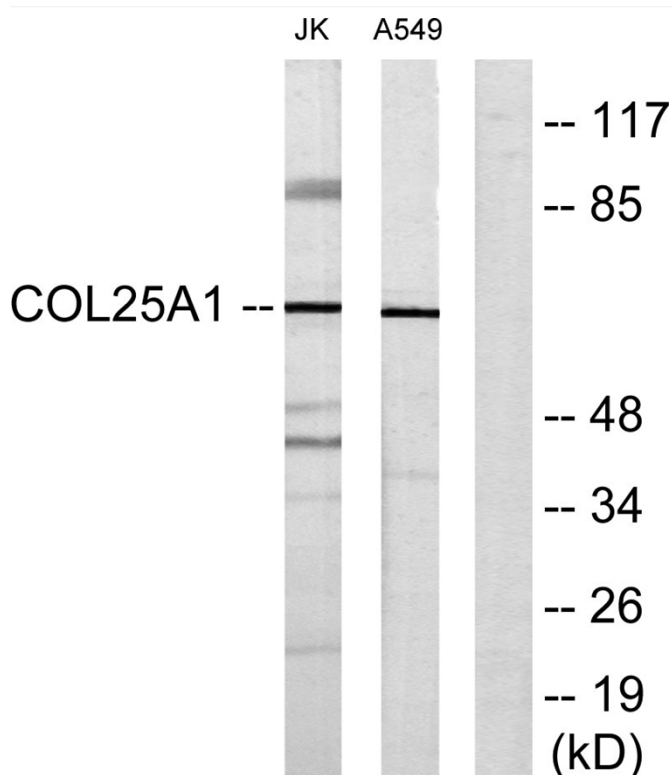
matters needing attention

Avoid repeated freezing and thawing!

Usage suggestions

This product can be used in immunological reaction related experiments. For more information, please consult technical personnel.

Products Images



Western blot analysis of lysates from Jurkat and A549 cells, using Collagen XXV alpha1 Antibody. The lane on the right is blocked with the synthesized peptide.