



COL20A1 Polyclonal Antibody

Catalog No	BYab-16990
Isotype	IgG
Reactivity	Human;Mouse;Rat
Applications	WB;IHC;IF;ELISA
Gene Name	COL20A1
Protein Name	Collagen alpha-1(XX) chain
Immunogen	The antiserum was produced against synthesized peptide derived from human Collagen XX alpha1. AA range:1151-1200
Specificity	COL20A1 Polyclonal Antibody detects endogenous levels of COL20A1 protein.
Formulation	Liquid in PBS containing 50% glycerol, 0.5% BSA and 0.02% sodium azide.
Source	Polyclonal, Rabbit,IgG
Purification	The antibody was affinity-purified from rabbit antiserum by affinity-chromatography using epitope-specific immunogen.
Dilution	Western Blot: 1/500 - 1/2000. Immunohistochemistry: 1/100 - 1/300. Immunofluorescence: 1/200 - 1/1000. ELISA: 1/20000. Not yet tested in other applications.
Concentration	1 mg/ml
Purity	≥90%
Storage Stability	-20°C/1 year
Synonyms	COL20A1; KIAA1510; Collagen alpha-1(XX) chain
Observed Band	140kD
Cell Pathway	Secreted, extracellular space .
Tissue Specificity	High expression in heart, lung, liver, skeletal muscle, kidney, pancreas, spleen, testis, ovary, subthalamic nucleus and fetal liver. Weak expression in other tissues tested.
Function	function:Probable collagen protein.,similarity:Contains 1 collagen-like domain.,similarity:Contains 1 TSP N-terminal (TSPN) domain.,similarity:Contains 1 VWFA domain.,similarity:Contains 6 fibronectin type-III domains.,tissue specificity:High expression in heart, lung, liver, skeletal muscle, kidney, pancreas, spleen, testis, ovary, subthalamic nucleus and fetal liver. Weak expression in other tissues tested.,
Background	COL20A1 (Collagen Type XX Alpha 1) is a Protein Coding gene. Among its related pathways are Collagen biosynthesis and modifying enzymes and ERK

Nanjing BYabscience technology Co.,Ltd



Signaling. An important paralog of this gene is MATN1.

**matters needing
attention**

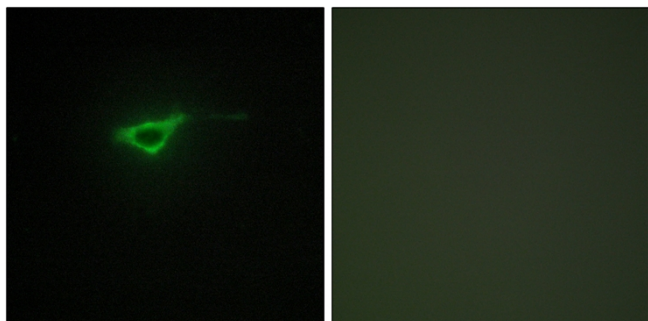
Avoid repeated freezing and thawing!

Usage suggestions

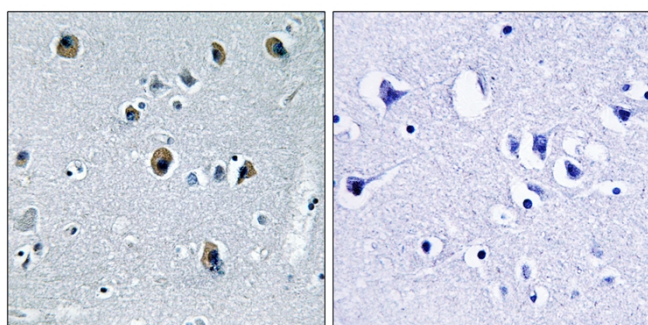
This product can be used in immunological reaction related experiments. For more information, please consult technical personnel.



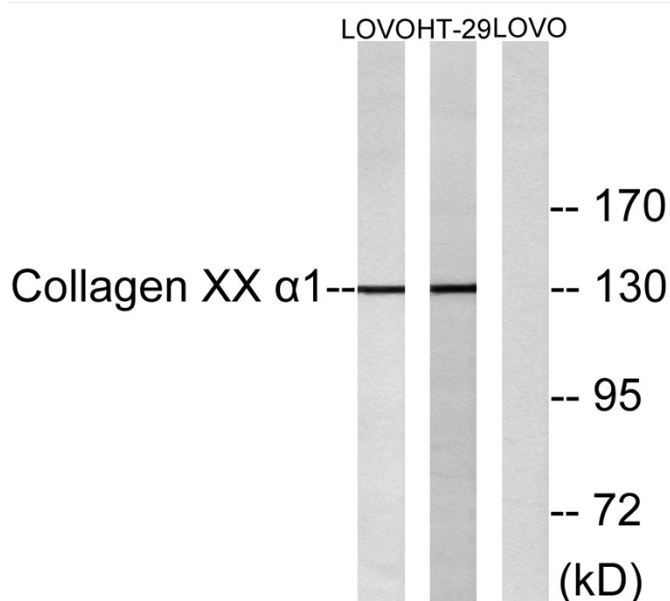
Products Images



Immunofluorescence analysis of NIH/3T3 cells, using Collagen XX alpha1 Antibody. The picture on the right is blocked with the synthesized peptide.



Immunohistochemistry analysis of paraffin-embedded human brain tissue, using Collagen XX alpha1 Antibody. The picture on the right is blocked with the synthesized peptide.



Nanjing BYabs science technology Co.,Ltd

网址: www.njbybio.com

官方热线: 025-5229-8998

监督电话: 15950492658