



# Connexin 25 Polyclonal Antibody

<b>Catalog No</b>	BYab-16999
<b>Isotype</b>	IgG
<b>Reactivity</b>	Human;Rat;Mouse;
<b>Applications</b>	WB;ELISA
<b>Gene Name</b>	GJB7
<b>Protein Name</b>	Gap junction beta-7 protein
<b>Immunogen</b>	The antiserum was produced against synthesized peptide derived from human GJB7. AA range:21-70
<b>Specificity</b>	Connexin 25 Polyclonal Antibody detects endogenous levels of Connexin 25 protein.
<b>Formulation</b>	Liquid in PBS containing 50% glycerol, 0.5% BSA and 0.02% sodium azide.
<b>Source</b>	Polyclonal, Rabbit,IgG
<b>Purification</b>	The antibody was affinity-purified from rabbit antiserum by affinity-chromatography using epitope-specific immunogen.
<b>Dilution</b>	Western Blot: 1/500 - 1/2000. ELISA: 1/10000. Not yet tested in other applications.
<b>Concentration</b>	1 mg/ml
<b>Purity</b>	≥90%
<b>Storage Stability</b>	-20°C/1 year
<b>Synonyms</b>	GJB7; CX25; Gap junction beta-7 protein; Connexin-25; Cx25
<b>Observed Band</b>	24kD
<b>Cell Pathway</b>	Cell membrane ; Multi-pass membrane protein . Cell junction, gap junction .
<b>Tissue Specificity</b>	Weakly expressed in placenta.
<b>Function</b>	function:One gap junction consists of a cluster of closely packed pairs of transmembrane channels, the connexons, through which materials of low MW diffuse from one cell to a neighboring cell.,similarity:Belongs to the connexin family. Beta-type (group I) subfamily.,subunit:A connexon is composed of a hexamer of connexins.,tissue specificity:Weakly expressed in placenta.,
<b>Background</b>	Connexins, such as GJB7, are involved in the formation of gap junctions, intercellular conduits that directly connect the cytoplasms of contacting cells. Each gap junction channel is formed by docking of 2 hemichannels, each of which contains 6 connexin subunits (Sohl et al., 2003 [PubMed 12881038]).[supplied by OMIM, Mar 2008],

**Nanjing BYabscience technology Co.,Ltd**



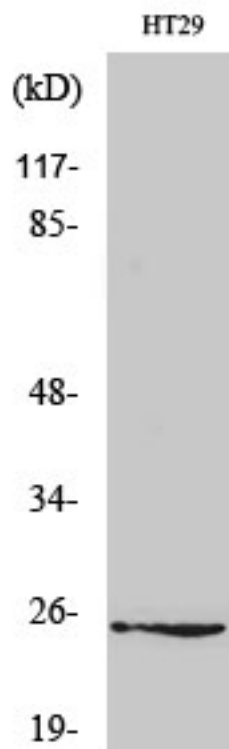
**matters needing attention**

Avoid repeated freezing and thawing!

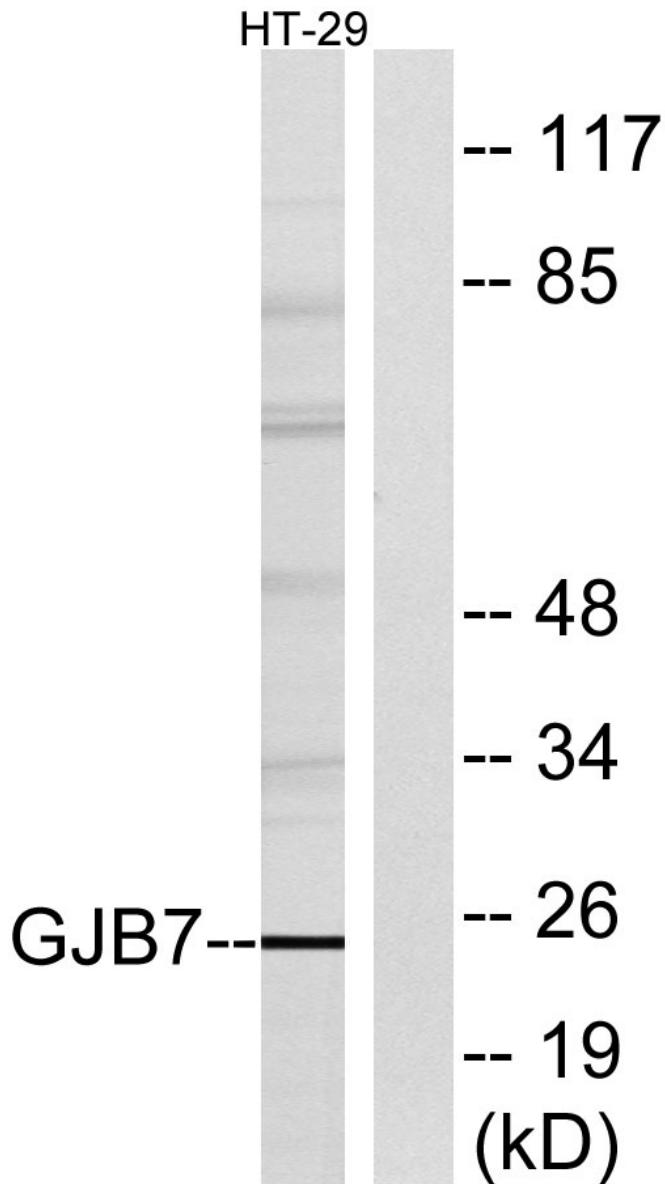
**Usage suggestions**

This product can be used in immunological reaction related experiments. For more information, please consult technical personnel.

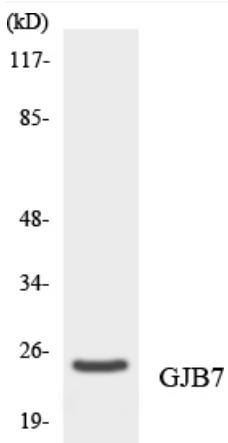
**Products Images**



Western Blot analysis of various cells using Connexin 25 Polyclonal Antibody diluted at 1:500



Western blot analysis of lysates from HT-29 cells, using GJB7 Antibody. The lane on the right is blocked with the synthesized peptide.



Western blot analysis of the lysates from HeLa cells using GJB7 antibody.