



Connexin-32 Polyclonal Antibody

Catalog No	BYab-17008
Isotype	IgG
Reactivity	Human;Mouse;Rat
Applications	WB;IHC;IF;ELISA
Gene Name	GJB1
Protein Name	Gap junction beta-1 protein
Immunogen	The antiserum was produced against synthesized peptide derived from human Connexin-32. AA range:66-115
Specificity	Connexin-32 Polyclonal Antibody detects endogenous levels of Connexin-32 protein.
Formulation	Liquid in PBS containing 50% glycerol, 0.5% BSA and 0.02% sodium azide.
Source	Polyclonal, Rabbit,IgG
Purification	The antibody was affinity-purified from rabbit antiserum by affinity-chromatography using epitope-specific immunogen.
Dilution	WB: 1/500 - 1/2000. IHC: 1/100 - 1/300. ELISA: 1/40000.. IF 1:50-200
Concentration	1 mg/ml
Purity	≥90%
Storage Stability	-20°C/1 year
Synonyms	GJB1; CX32; Gap junction beta-1 protein; Connexin-32; Cx32; GAP junction 28 kDa liver protein
Observed Band	32kD
Cell Pathway	Cell membrane; Multi-pass membrane protein. Cell junction, gap junction.
Tissue Specificity	Liver,Placenta,Skin,Subthalamc nucleus,
Function	disease:Defects in GJB1 are the cause of Charcot-Marie-Tooth disease X-linked type 1 (CMTX1) [MIM:302800]; also designated CMT-X. CMTX1 is a form of Charcot-Marie-Tooth disease, the most common inherited disorder of the peripheral nervous system. Charcot-Marie-Tooth disease is classified in two main groups on the basis of electrophysiologic properties and histopathology: primary peripheral demyelinating neuropathies characterized by severely reduced motor nerve conduction velocities (NCVs) (less than 38m/s) and segmental demyelination and remyelination, and primary peripheral axonal neuropathies characterized by normal or mildly reduced NCVs and chronic axonal degeneration and regeneration on nerve biopsy. CMTX1 has both demyelinating and axonal

Nanjing BYabs science technology Co.,Ltd



features. Central nervous system involvement may occur.,disease:Defects in GJB1 may contribute to the phenotype of Dejerine-Sottas syndrome (DSS

Background

This gene encodes a member of the gap junction protein family. The gap junction proteins are membrane-spanning proteins that assemble to form gap junction channels that facilitate the transfer of ions and small molecules between cells. According to sequence similarities at the nucleotide and amino acid levels, the gap junction proteins are divided into two categories, alpha and beta. Mutations in this gene cause X-linked Charcot-Marie-Tooth disease, an inherited peripheral neuropathy. Alternatively spliced transcript variants encoding the same protein have been found for this gene. [provided by RefSeq, Oct 2008],

matters needing attention

Avoid repeated freezing and thawing!

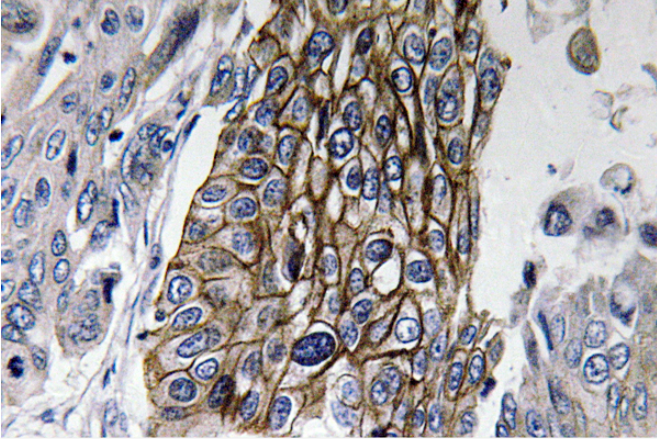
Usage suggestions

This product can be used in immunological reaction related experiments. For more information, please consult technical personnel.

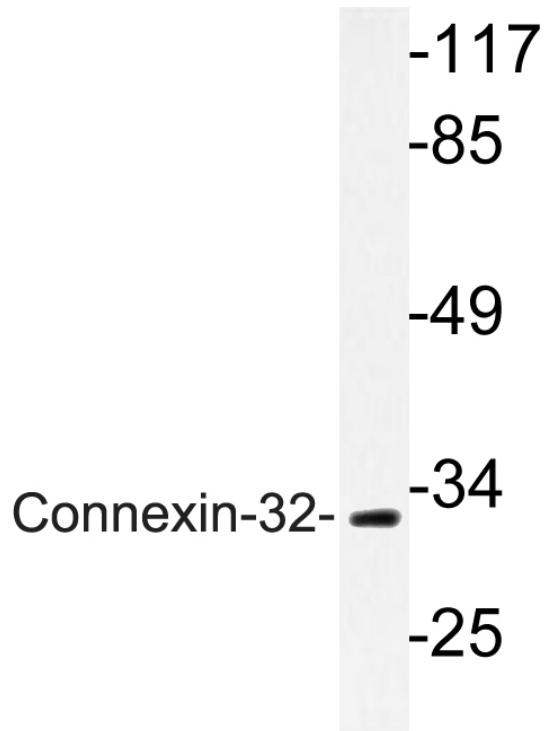
Nanjing BYabscience technology Co.,Ltd



Products Images



Immunohistochemistry analysis of Connexin-32 antibody in paraffin-embedded human lung carcinoma tissue.



Western blot analysis of lysate from LOVO cells, using Connexin-32 antibody.