



Fibulin-4 Polyclonal Antibody

Catalog No	BYab-17022
Isotype	IgG
Reactivity	Human;Rat;Mouse;
Applications	WB;IHC;IF;ELISA
Gene Name	EFEMP2
Protein Name	EGF-containing fibulin-like extracellular matrix protein 2
Immunogen	The antiserum was produced against synthesized peptide derived from human EFEMP2. AA range:91-140
Specificity	Fibulin-4 Polyclonal Antibody detects endogenous levels of Fibulin-4 protein.
Formulation	Liquid in PBS containing 50% glycerol, 0.5% BSA and 0.02% sodium azide.
Source	Polyclonal, Rabbit,IgG
Purification	The antibody was affinity-purified from rabbit antiserum by affinity-chromatography using epitope-specific immunogen.
Dilution	Western Blot: 1/500 - 1/2000. Immunohistochemistry: 1/100 - 1/300. Immunofluorescence: 1/200 - 1/1000. ELISA: 1/10000. Not yet tested in other applications.
Concentration	1 mg/ml
Purity	≥90%
Storage Stability	-20°C/1 year
Synonyms	EFEMP2; FBLN4; EGF-containing fibulin-like extracellular matrix protein 2; Fibulin-4; FIBL-4; Protein UPH1
Observed Band	50kD
Cell Pathway	Secreted, extracellular space, extracellular matrix . Secreted, extracellular space, extracellular matrix, basement membrane . Localizes on the microfibrils surrounding ELN cores. .
Tissue Specificity	Brain,Melanoma,Placenta,Synovial membrane t
Function	disease:Defects in EFEMP2 are a cause of autosomal recessive cutis laxa type I (CL type I) [MIM:219100]. Hereditary cutis laxa refers to a heterogeneous group of connective tissue disorders characterized by cutaneous abnormalities and variable systemic manifestations. The most constant clinical feature is loose skin, sagging over the face and trunk. Hereditary cutis laxa is inherited in both autosomal dominant and autosomal recessive modes. CL type I shows the most severe phenotype and has the poorest prognosis. In addition to the skin, internal organs enriched in elastic fibers, such as the lung and arteries, are

Nanjing BYabscience technology Co.,Ltd



affected.,similarity:Belongs to the fibulin family.,similarity:Contains 6 EGF-like domains.,

Background

A large number of extracellular matrix proteins have been found to contain variations of the epidermal growth factor (EGF) domain and have been implicated in functions as diverse as blood coagulation, activation of complement and determination of cell fate during development. The protein encoded by this gene contains four EGF2 domains and six calcium-binding EGF2 domains. This gene is necessary for elastic fiber formation and connective tissue development. Defects in this gene are cause of an autosomal recessive cutis laxa syndrome. Alternatively spliced transcript variants have been identified for this gene. [provided by RefSeq, Jan 2011],

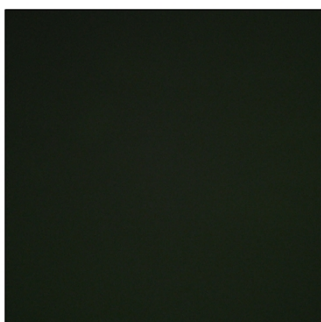
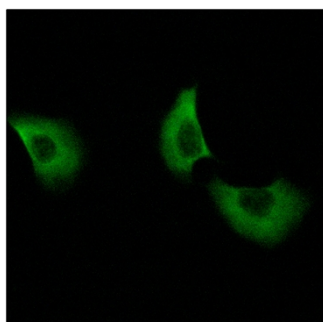
matters needing attention

Avoid repeated freezing and thawing!

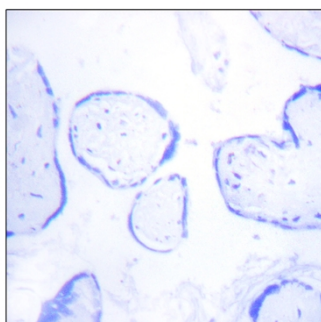
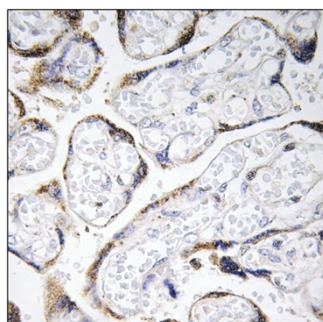
Usage suggestions

This product can be used in immunological reaction related experiments. For more information, please consult technical personnel.

Products Images



Immunofluorescence analysis of A549 cells, using EFEMP2 Antibody. The picture on the right is blocked with the synthesized peptide.



Immunohistochemistry analysis of paraffin-embedded human placenta tissue, using EFEMP2 Antibody. The picture on the right is blocked with the synthesized peptide.

Nanjing BYabscience technology Co.,Ltd

网址: www.njbybio.com

官方热线: 025-5229-8998

监督电话: 15950492658

