



# Nidogen Polyclonal Antibody

|                           |  |
|---------------------------|--|
| <b>Catalog No</b>         | BYab-17059   |
| <b>Isotype</b>            | IgG  |
| <b>Reactivity</b>         | Human;Mouse;Rat  |
| <b>Applications</b>       | WB;ELISA   |
| <b>Gene Name</b>          | NID1   |
| <b>Protein Name</b>       | Nidogen-1  |
| <b>Immunogen</b>          | The antiserum was produced against synthesized peptide derived from human NID1. AA range:219-268   |
| <b>Specificity</b>        | Nidogen Polyclonal Antibody detects endogenous levels of Nidogen protein.  |
| <b>Formulation</b>        | Liquid in PBS containing 50% glycerol, 0.5% BSA and 0.02% sodium azide.  |
| <b>Source</b>             | Polyclonal, Rabbit,IgG   |
| <b>Purification</b>       | The antibody was affinity-purified from rabbit antiserum by affinity-chromatography using epitope-specific immunogen.  |
| <b>Dilution</b>           | Western Blot: 1/500 - 1/2000. ELISA: 1/20000. Not yet tested in other applications.  |
| <b>Concentration</b>      | 1 mg/ml  |
| <b>Purity</b>             | ≥90%   |
| <b>Storage Stability</b>  | -20°C/1 year   |
| <b>Synonyms</b>           | NID1; NID; Nidogen-1; NID-1; Entactin  |
| <b>Observed Band</b>      | 136kD  |
| <b>Cell Pathway</b>       | Secreted, extracellular space, extracellular matrix, basement membrane.  |
| <b>Tissue Specificity</b> | Brain,Placenta,Testis,   |
| <b>Function</b>           | function:Sulfated glycoprotein widely distributed in basement membranes and tightly associated with laminin. Also binds to collagen IV and perlecan. It probably has a role in cell-extracellular matrix interactions.,PTM:N- and O-glycosylated.,similarity:Contains 1 NIDO domain.,similarity:Contains 1 nidogen G2 beta-barrel domain.,similarity:Contains 1 thyroglobulin type-1 domain.,similarity:Contains 4 LDL-receptor class B repeats.,similarity:Contains 6 EGF-like domains.,subunit:Interacts with FBLN1 and LGALS3BP., |
| <b>Background</b>         | nidogen 1(NID1) Homo sapiens This gene encodes a member of the nidogen family of basement membrane glycoproteins. The protein interacts with several other components of basement membranes, and may play a role in cell   |

**Nanjing BYabscience technology Co.,Ltd**



interactions with the extracellular matrix. [provided by RefSeq, Jul 2008],

**matters needing  
attention**

Avoid repeated freezing and thawing!

**Usage suggestions**

This product can be used in immunological reaction related experiments. For more information, please consult technical personnel.

Nanjing BYabscience technology Co.,Ltd

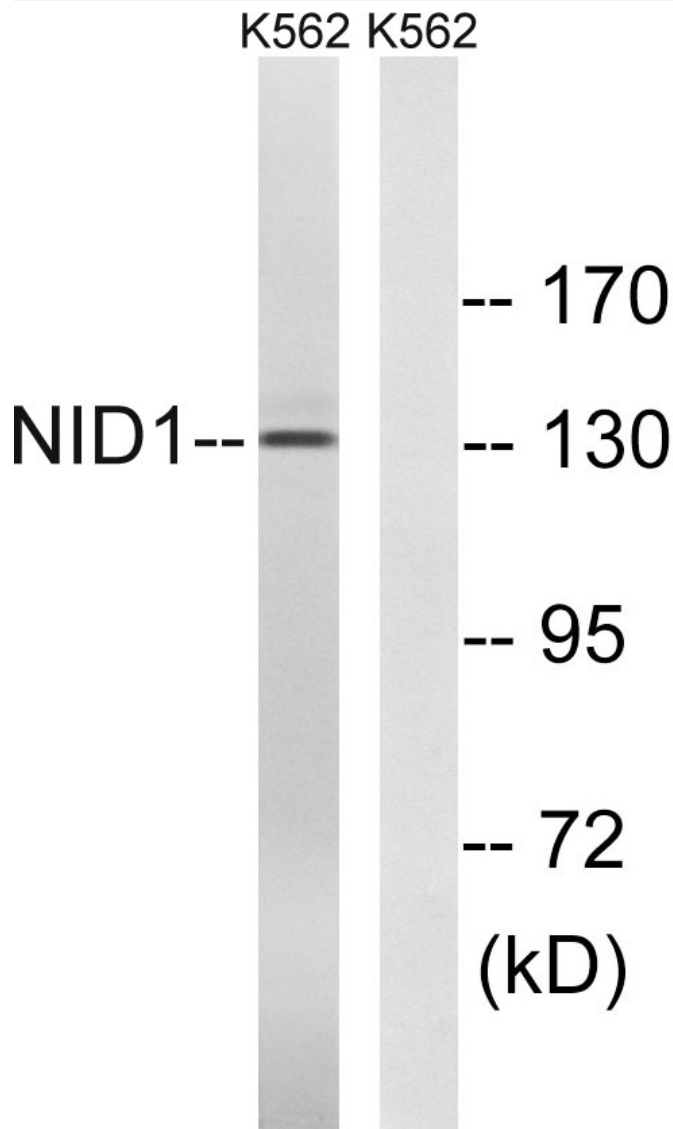
网址: [www.njbybio.com](http://www.njbybio.com)

官方热线: 025-5229-8998

监督电话: 15950492658



## Products Images



Western blot analysis of lysates from K562 cells, using NID1 Antibody. The lane on the right is blocked with the synthesized peptide.