



Thrombospondin 2 Polyclonal Antibody

Catalog No	BYab-17107
Isotype	IgG
Reactivity	Human;Mouse;Rat
Applications	WB;IHC;IF;ELISA
Gene Name	THBS2
Protein Name	Thrombospondin-2
Immunogen	The antiserum was produced against synthesized peptide derived from the C-terminal region of human THBS2. AA range:1000-1050
Specificity	Thrombospondin 2 Polyclonal Antibody detects endogenous levels of Thrombospondin 2 protein.
Formulation	Liquid in PBS containing 50% glycerol, 0.5% BSA and 0.02% sodium azide.
Source	Polyclonal, Rabbit,IgG
Purification	The antibody was affinity-purified from rabbit antiserum by affinity-chromatography using epitope-specific immunogen.
Dilution	WB: 1/500 - 1/2000. IHC-p: 1:100-1:300. ELISA: 1/10000.. IF 1:50-200
Concentration	1 mg/ml
Purity	≥90%
Storage Stability	-20°C/1 year
Synonyms	THBS2; TSP2; Thrombospondin-2
Observed Band	130kD
Cell Pathway	extracellular region,basement membrane,extracellular matrix,platelet alpha granule,
Tissue Specificity	High expression in intervertebral disk tissue.
Function	disease:Genetic variations in THBS2 may be a cause of susceptibility to lumbar disk herniation (LDH) [MIM:603932]. LDH is the predominant cause of low-back pain and unilateral leg pain.,function:Adhesive glycoprotein that mediates cell-to-cell and cell-to-matrix interactions. Can bind to fibrinogen, fibronectin, laminin and type V collagen.,similarity:Belongs to the thrombospondin family.,similarity:Contains 1 TSP C-terminal (TSPC) domain.,similarity:Contains 1 TSP N-terminal (TSPN) domain.,similarity:Contains 1 VWFC domain.,similarity:Contains 3 EGF-like domains.,similarity:Contains 3 TSP type-1 domains.,similarity:Contains 8 TSP type-3 repeats.,subunit:Homotrimer; disulfide-linked.,tissue specificity:High expression in intervertebral disk tissue.,

Nanjing BYabscience technology Co.,Ltd



Background

thrombospondin 2 (THBS2) Homo sapiens The protein encoded by this gene belongs to the thrombospondin family. It is a disulfide-linked homotrimeric glycoprotein that mediates cell-to-cell and cell-to-matrix interactions. This protein has been shown to function as a potent inhibitor of tumor growth and angiogenesis. Studies of the mouse counterpart suggest that this protein may modulate the cell surface properties of mesenchymal cells and be involved in cell adhesion and migration. [provided by RefSeq, Jul 2008],

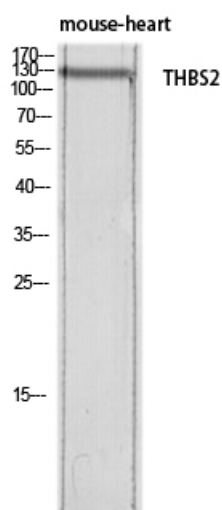
matters needing attention

Avoid repeated freezing and thawing!

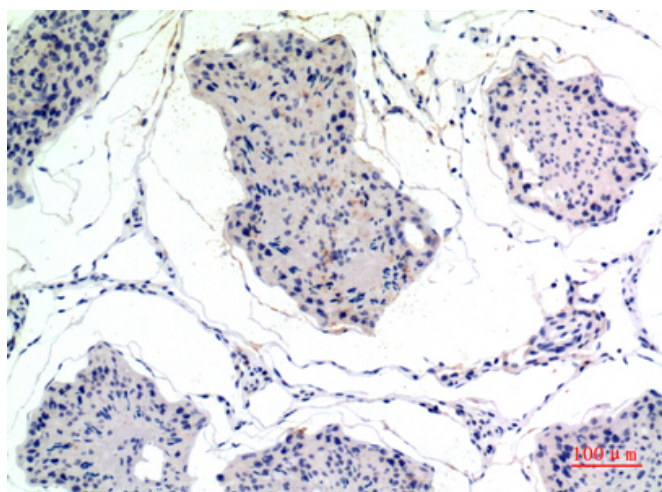
Usage suggestions

This product can be used in immunological reaction related experiments. For more information, please consult technical personnel.

Products Images



Western blot analysis of mouse-heart lysis using THBS2 antibody. Antibody was diluted at 1:500. Secondary antibody(catalog#:RS0002) was diluted at 1:20000



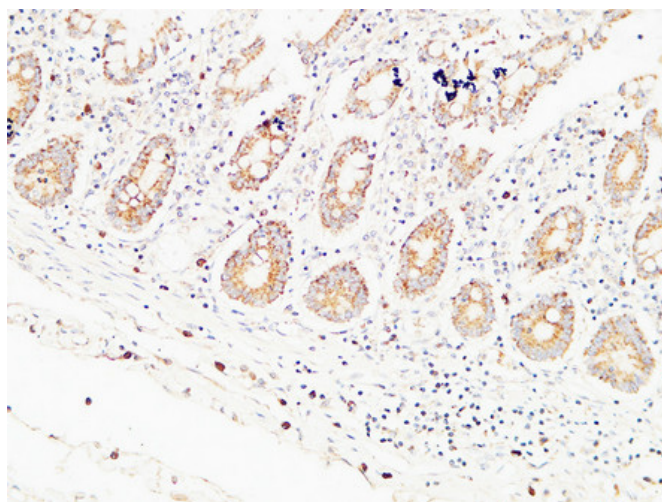
Immunohistochemical analysis of paraffin-embedded rat-testis, antibody was diluted at 1:100

Nanjing BYabscience technology Co.,Ltd

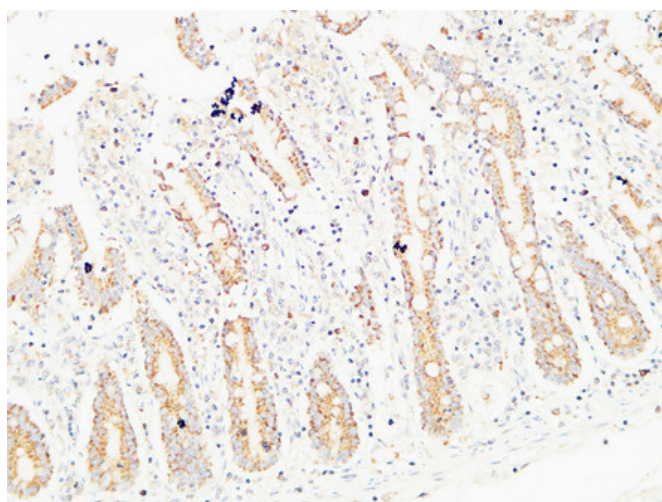
网址: www.njbybio.com

官方热线: 025-5229-8998

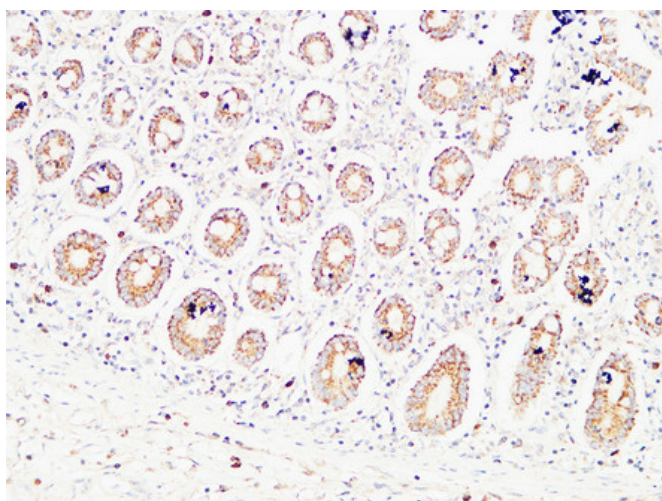
监督电话: 15950492658



Immunohistochemical analysis of paraffin-embedded Human colon. 1, Antibody was diluted at 1:200(4° overnight). 2, High-pressure and temperature EDTA, pH8.0 was used for antigen retrieval. 3, Secondary antibody was diluted at 1:200(room temperature, 30min).



Immunohistochemical analysis of paraffin-embedded Human colon. 1, Antibody was diluted at 1:200(4° overnight). 2, High-pressure and temperature EDTA, pH8.0 was used for antigen retrieval. 3, Secondary antibody was diluted at 1:200(room temperature, 30min).



Immunohistochemical analysis of paraffin-embedded Human colon. 1, Antibody was diluted at 1:200(4° overnight). 2, High-pressure and temperature EDTA, pH8.0 was used for antigen retrieval. 3, Secondary antibody was diluted at 1:200(room temperature, 30min).