



# COL25A1 Polyclonal Antibody

<b>Catalog No</b>	BYab-17111
<b>Isotype</b>	IgG
<b>Reactivity</b>	Human;Mouse
<b>Applications</b>	WB;ELISA
<b>Gene Name</b>	COL25A1
<b>Protein Name</b>	collagen, type XXV, alpha 1
<b>Immunogen</b>	Synthetic peptide from human protein at AA range: 101-150
<b>Specificity</b>	The antibody detects endogenous COL25A1 protein
<b>Formulation</b>	Liquid in PBS containing 50% glycerol, 0.5% BSA and 0.02% sodium azide.
<b>Source</b>	Polyclonal, Rabbit,IgG
<b>Purification</b>	The antibody was affinity-purified from rabbit antiserum by affinity-chromatography using epitope-specific immunogen.
<b>Dilution</b>	WB 1:500-2000, ELISA 1:10000-20000
<b>Concentration</b>	1 mg/ml
<b>Purity</b>	≥90%
<b>Storage Stability</b>	-20°C/1 year
<b>Synonyms</b>	COL25A1
<b>Observed Band</b>	64kD
<b>Cell Pathway</b>	Membrane ; Single-pass type II membrane protein . After proteolytic cleavage, CLAC is secreted.
<b>Tissue Specificity</b>	Expressed predominantly in brain. Deposited preferentially in primitive or neuritic amyloid plaques which are typical of Alzheimer disease.
<b>Function</b>	caution:The pyrrolidone carboxylic acid reported in PubMed:11927537 probably formed artifactually from Glu-113 during the extraction procedure in 70% formic acid. In PubMed:15522881, the protein was found to have unblocked Glu at the N-terminus.,function:Inhibits fibrillization of beta amyloid peptide during the elongation phase. Has also been shown to assemble amyloid fibrils into protease-resistant aggregates. Binds heparin.,PTM:Glycosylated.,PTM:Hydroxylated on 11% of proline residues and 49% of lysine residues.,PTM:Undergoes proteolytic cleavage by furin protease to yield the soluble collagen-like Alzheimer amyloid plaque component.,similarity:Contains 7 collagen-like domains.,subcellular location:After proteolytic cleavage, CLAC is secreted.,subunit:Forms homodimers and

**Nanjing BYabs science technology Co.,Ltd**



homotrimers. Binds to the fibrillized forms of beta amyloid peptide 40 (beta-APP40) and beta amyloid peptide 42 (b

## Background

This gene encodes a brain-specific membrane associated collagen. A product of proteolytic processing of the encoded protein, CLAC (collagenous Alzheimer amyloid plaque component), binds to amyloid beta-peptides found in Alzheimer amyloid plaques but CLAC inhibits rather than facilitates amyloid fibril elongation (PMID: 16300410). A study of over-expression of this collagen in mice, however, found changes in pathology and behavior suggesting that the encoded protein may promote amyloid plaque formation (PMID: 19548013). Multiple transcript variants encoding different isoforms have been found for this gene. [provided by RefSeq, Dec 2011],

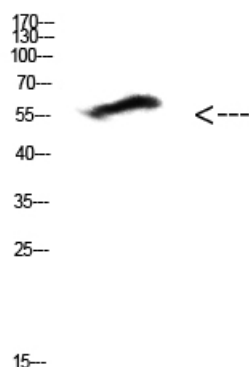
## matters needing attention

Avoid repeated freezing and thawing!

## Usage suggestions

This product can be used in immunological reaction related experiments. For more information, please consult technical personnel.

## Products Images



Western Blot analysis of HEPG2 cells using Antibody diluted at 500. Secondary antibody(catalog#:RS0002) was diluted at 1:20000

**Nanjing BYabscience technology Co.,Ltd**

网址: [www.njbybio.com](http://www.njbybio.com)

官方热线: 025-5229-8998

监督电话: 15950492658